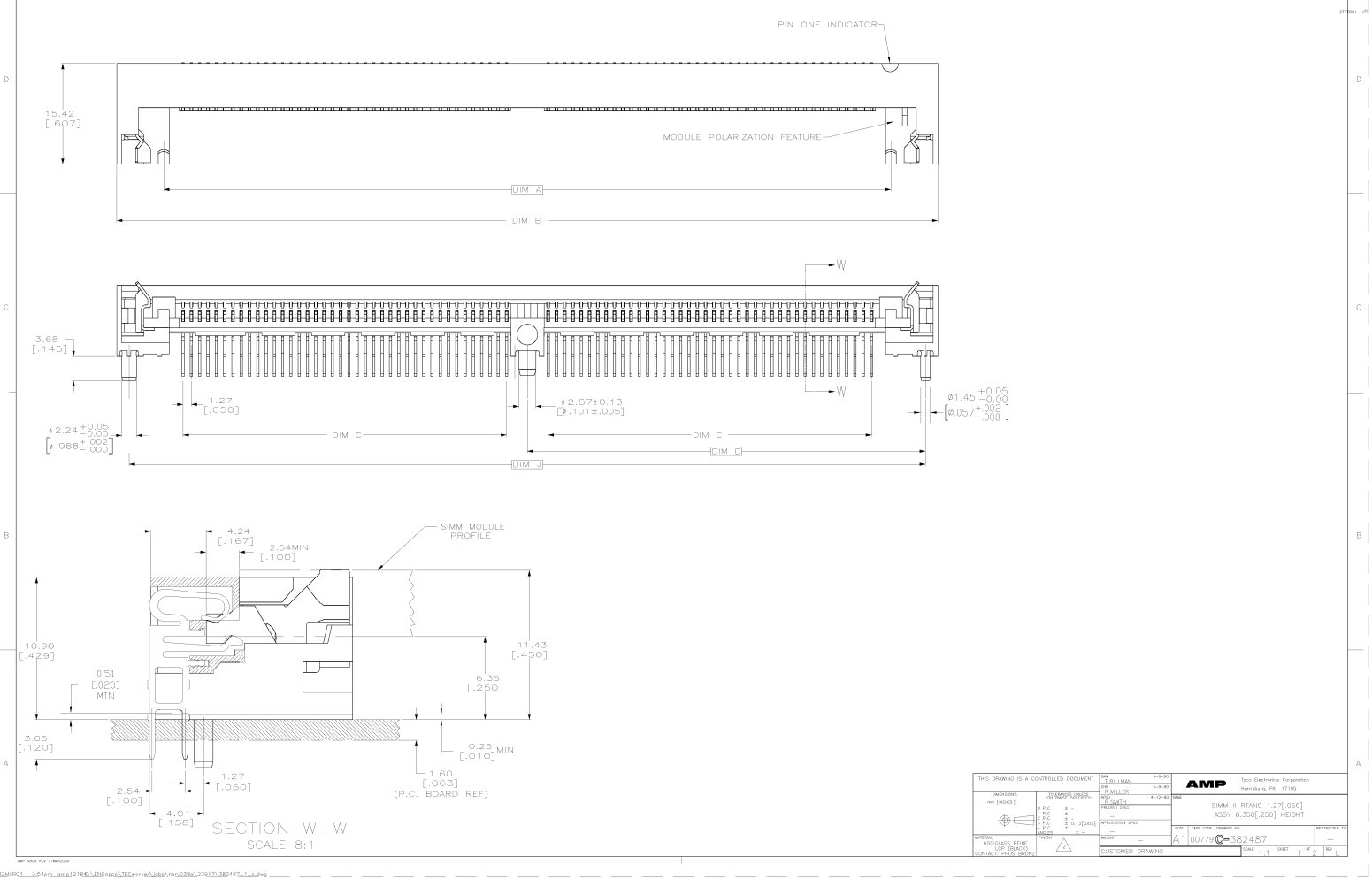


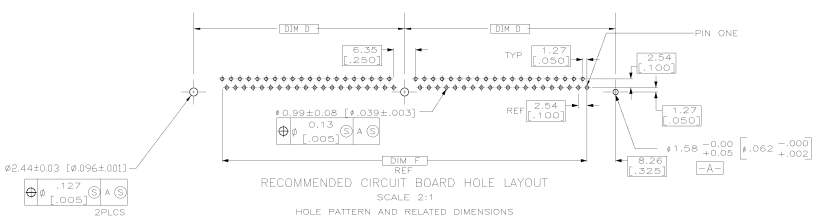
FOR FABRICATOR'S INFORMATION: REFERENCE THE PACKAGING INFORMATION FOR THE PACKAGE.
 FOR THE CUSTOMER'S INFORMATION: FOR THE BOARD REFERENCE.

REV	00	REVISIONS	DATE	BY
GP	00	REV PER: 0510-0134-00	2/19/81	JR



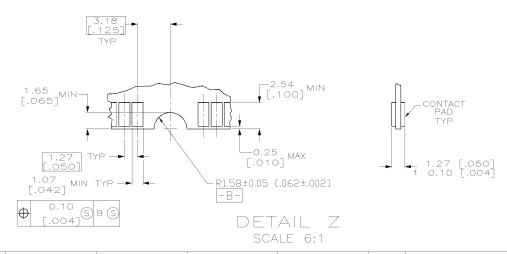
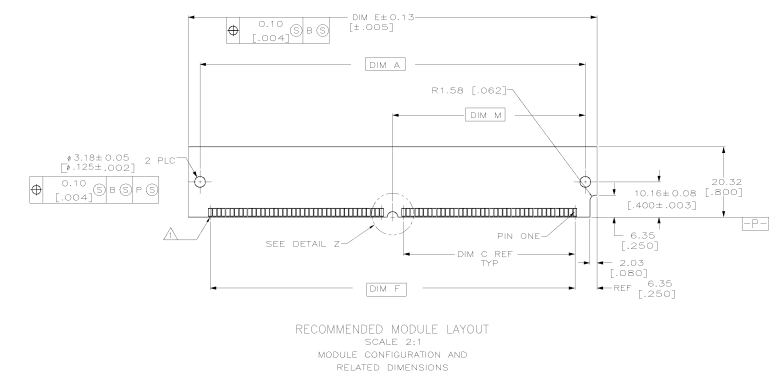
THIS DRAWING IS A CONTROLLED DOCUMENT		REV	00	DATE	2/19/81
DRAWN BY		GP	00	DATE	2/19/81
CHECKED BY		GP	00	DATE	2/19/81
APPROVED BY		GP	00	DATE	2/19/81
PART NAME		SIMM II RTANG 1.27 [0.050] ASSY 6.35 [0.250] HEIGHT			
PART NUMBER		A1 00777 382487			
CUSTOMER DRAWING		YES			

REV	DATE	DESCRIPTION	BY	APP'D
1				
2				
3				
4				
5				
6				
7				
8				
9				
10				



FOR OPTIMUM PERFORMANCE, CONTACT PAD PLATING SHOULD BE SMOOTH AND FLAT. COPPER CONTACT PADS ARE TO BE OVERPLATED WITH .00127[.000050] MIN. THK NICKEL FOLLOWED WITH .00101[.000040] MIN THK GOLD PLATING.

CONTACT MATING AREA:
 0.00076 [0.000030] MIN THICK GOLD,
 SOLDERTAIL: 0.00381 [0.00150] MIN. THK TIN-LEAD,
 UNDERPLATE: 0.00127 [0.000500] MIN. THK NICKEL OVER ENTIRE CONTACT.



	DIM M	DIM J	DIM F	DIM E	DIM D	DIM C	DIM B	POSN	PART NO
	58.22 [2.292]	127.00 [5.000]	110.49 [4.350]	123.19 [4.850]	63.50 [2.500]	52.07 [2.050]	130.81 [5.150]	116.43 [4.584]	84 8-382487-4
OBSOLETE	55.68 [2.192]	121.92 [4.800]	105.41 [4.150]	118.11 [4.650]	60.96 [2.400]	49.53 [1.950]	125.73 [4.950]	111.35 [4.384]	80 8-382487-0
	50.60 [1.992]	111.76 [4.400]	95.25 [3.750]	107.95 [4.250]	55.88 [2.200]	44.45 [1.750]	115.57 [4.550]	101.19 [3.984]	72 7-382487-2
	48.05 [1.892]	106.68 [4.200]	90.17 [3.550]	102.87 [4.050]	53.34 [2.100]	41.91 [1.650]	110.49 [4.350]	96.11 [3.784]	68 6-382487-8
OBSOLETE	45.52 [1.792]	101.60 [4.000]	85.09 [3.350]	97.79 [3.850]	50.80 [2.000]	39.37 [1.550]	105.41 [4.150]	91.03 [3.584]	64 6-382487-4
	30.28 [1.192]	71.12 [2.800]	54.81 [2.150]	67.31 [2.650]	35.56 [1.400]	24.13 [0.950]	74.93 [2.950]	60.55 [2.384]	40 4-382487-0

UNLESS SPECIFIED DIMENSIONS IN mm [INCHES]	DR	4-3-88	T.BILLMAN
TOLERANCES UNLESS SPECIFIED	DRK	4-3-88	R.MILLER
3 DEC	APRO	4-11-88	R.SWINT
ANGLE DEC 1	APRO	4-11-88	R.SWINT
MATERIAL	APRO	4-11-88	R.SWINT
PRODUCT SPEC	APRO	4-11-88	R.SWINT
FINISH	APPLICATION SPEC		
WEIGHT			
NAME		SIMM II, RTANG,	
PRODUCT SPEC		1.27 [±.050] ASSY,	
APPLICATION SPEC		6.35 [±.250] HGT	
SIZE	DATE CODE	DRAWING NO	
D	00779	382487	
SCALE	4:1	SHEET	2 OF 2

CUSTOMER DRAWING