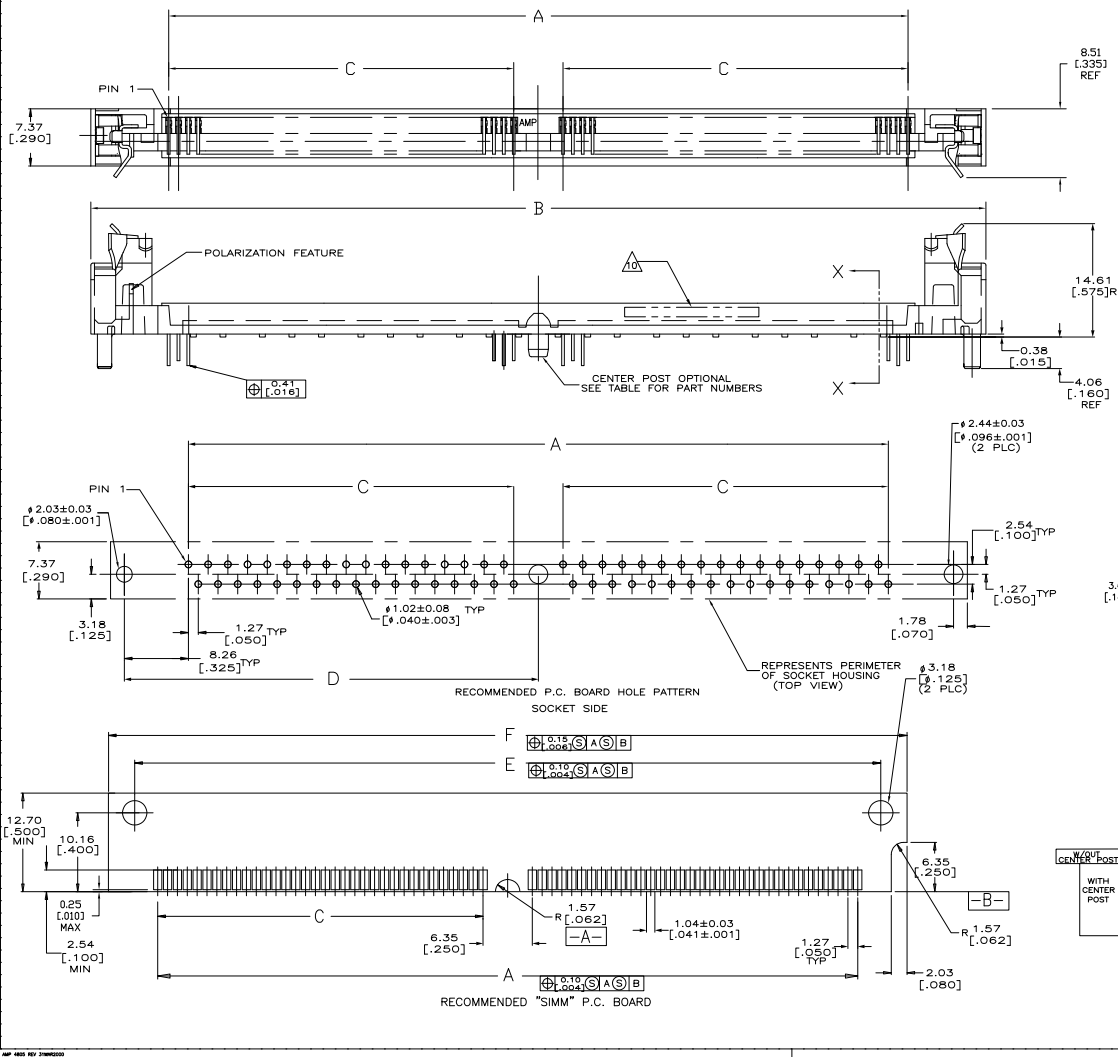
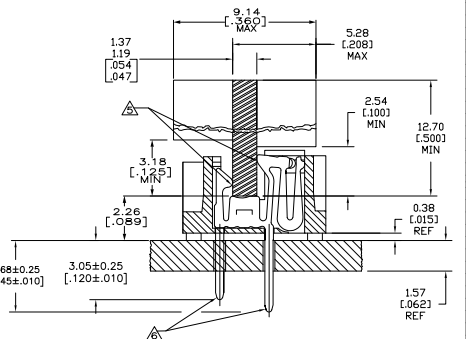


THIS DRAWING IS UNCLASSIFIED
 UNLESS INDICATED OTHERWISE
 © 2015 BY THE ELECTRONICS CORPORATION. ALL RIGHTS RESERVED.

REV	DATE	DESCRIPTION	BY	CHK	APP
00					
01		REVISED PER ECO-04-00242			



- ▲ HOUSING-MATERIAL : LIQUID-CRYSTAL-POLYMER, COLOR:NATURAL.
- ▲ CONTACT-MATERIAL : PHOS. BRONZE.
- ▲ LATCH-MATERIAL : BRASS, NICKEL PLATE.
- ▲ CONTACT-PLATE 0.00127 [0.00050] MIN NICKEL ALL OVER.
- ▲ CONTACT-PLATE 0.00076[0.00030] MIN. GOLD AT CONTACT PTS.
- ▲ CONTACT SOLDERDETAILS-PLATE 0.00508[0.000200] MIN TIN/LEAD.
- 7. IN ADDITION TO THOSE RECOMMENDED "SMM" P.C. BOARD DIMENSIONS AND TOLERANCES SHOWN, ALL JEDEC SPECIFICATIONS APPLY AS SHOWN ON MO-116, ISSUE A.
- 8. RECOMMENDED MATING S.I.M.M. TAB METALLURGY: BASE METAL-COPPER. PLATING TO BE 0.00076[0.00030] MIN GOLD OVER 0.00127[0.00050] MIN NICKEL.
- ▲ OBSOLETE.
- ▲ DATE CODE: (YEAR WEEK) XXXX FORMAT, LOCATED APPROXIMATELY AS SHOWN ON OPPOSITE SIDE.



REV	DATE	DESCRIPTION	BY	CHK	APP
01		REVISED PER ECO-04-00242			

REV	DATE	DESCRIPTION	BY	CHK	APP
01		REVISED PER ECO-04-00242			

REV	DATE	DESCRIPTION	BY	CHK	APP
01		REVISED PER ECO-04-00242			

REV	DATE	DESCRIPTION	BY	CHK	APP
01		REVISED PER ECO-04-00242			

REV	DATE	DESCRIPTION	BY	CHK	APP
01		REVISED PER ECO-04-00242			

REV	DATE	DESCRIPTION	BY	CHK	APP
01		REVISED PER ECO-04-00242			