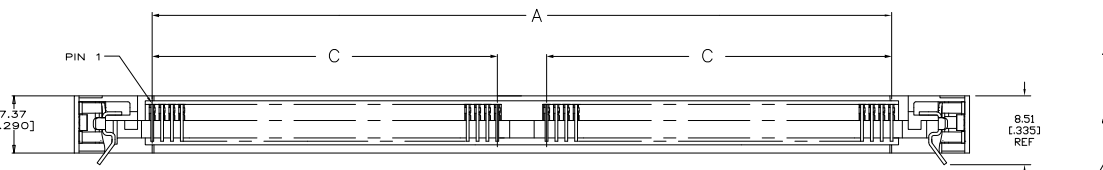
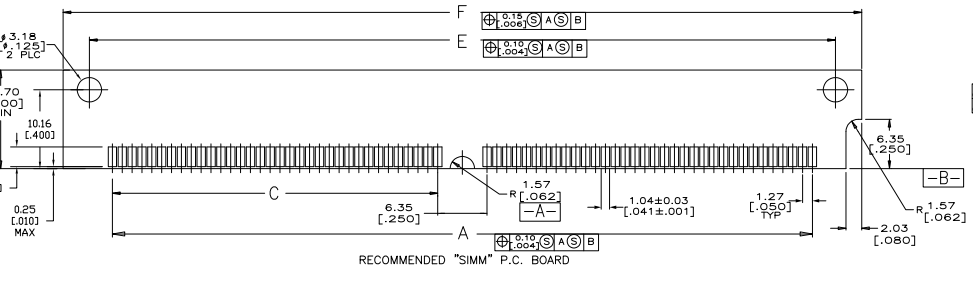
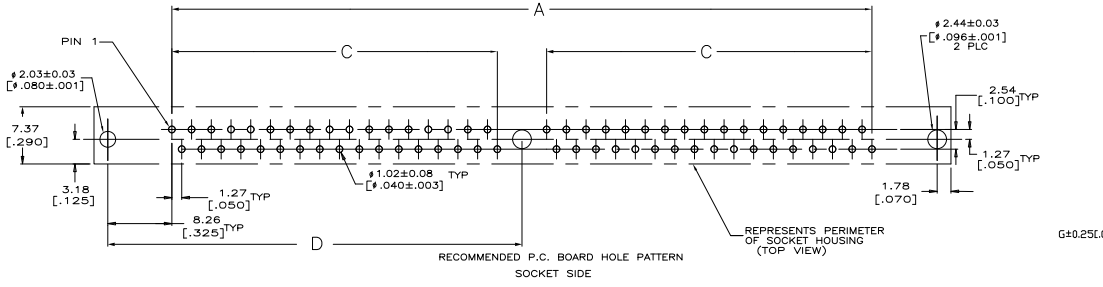
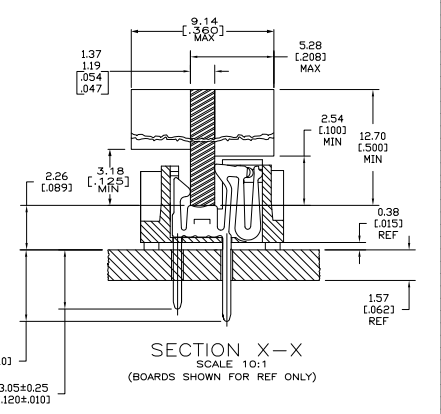
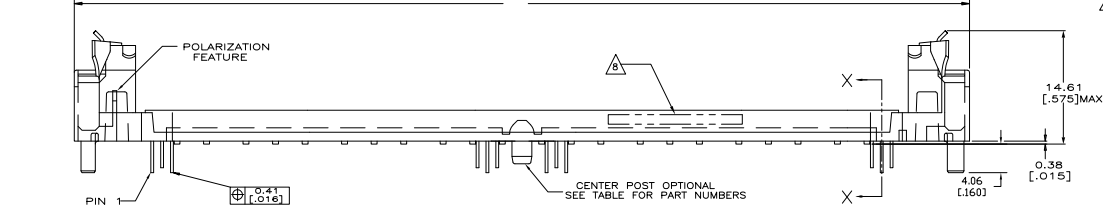


REV	DATE	DESCRIPTION	BY	CHK
AG 5.3				
S		REVISED PER EC0-04-00242		



- △ HOUSING-MATERIAL : LIQUID-CRYSTAL-POLYMER.
- △ CONTACT-MATERIAL : PHOS. BRONZE.
- △ LATCH-MATERIAL : BRASS, NICKEL PLATE.
- △ CONTACT-PLATE: 0.00508[.000200] MIN. TIN/LEAD OVER 0.00127 [.000050] MIN NICKEL.
- 5. IN ADDITION TO THOSE RECOMMENDED "SIMM" P.C. BOARD DIMENSIONS AND TOLERANCES SHOWN, ALL JEDEC SPECIFICATIONS APPLY AS SHOWN ON MO-116, ISSUE A.
- 6. RECOMMENDED MATING S.I.M.M. TAB METALLURGY: BASE METAL-COPPER, PLATING TO BE 0.00762[.000300] MIN TIN/LEAD OVER 0.00127[.000050] MIN NICKEL.
- △ OBSOLETE
- △ DATE CODE: (YEAR WEEK) XXXX FORMAT, LOCATED APPROXIMATELY AS SHOWN ON OPPOSITE SIDE.



WITH CENTER POST	3.05[.120]	107.95[4.250]	101.19[3.984]	55.88[2.200]	44.45[1.750]	115.57[4.550]	95.25[3.750]	72	3-822030-3
WITH CENTER POST	3.68[.145]	87.31[2.850]	80.85[2.384]	35.28[1.400]	24.13[.950]	74.93[2.950]	54.61[2.150]	40	822030-6
WITH CENTER POST	3.68[.145]	87.31[2.850]	80.85[2.384]	35.28[1.400]	24.13[.950]	74.93[2.950]	54.61[2.150]	40	822030-5
WITH CENTER POST	3.68[.145]	118.11[4.650]	111.35[4.384]	60.96[2.400]	49.53[1.950]	125.73[4.950]	105.41[4.150]	80	822030-4
WITH CENTER POST	3.68[.145]	107.95[4.250]	101.19[3.984]	55.88[2.200]	44.45[1.750]	115.57[4.550]	95.25[3.750]	72	822030-3
WITH CENTER POST	3.68[.145]	102.87[4.050]	96.11[3.784]	53.34[2.100]	41.91[1.650]	110.49[4.350]	90.17[3.550]	60	822030-2
WITH CENTER POST	3.68[.145]	97.79[3.850]	91.03[3.584]	30.80[1.200]	39.37[1.550]	105.41[4.150]	85.09[3.350]	50	822030-1

THIS DRAWING IS A CONTROLLED DOCUMENT. IT IS THE PROPERTY OF TDS ELECTRONICS CORPORATION. IT IS TO BE KEPT IN CONFIDENCE AND NOT TO BE REPRODUCED OR TRANSMITTED IN ANY FORM OR BY ANY MEANS, ELECTRONIC OR MECHANICAL, INCLUDING PHOTOCOPYING, RECORDING, OR BY ANY INFORMATION STORAGE AND RETRIEVAL SYSTEM.

DATE: 08/79
 DRAWING NO: 822030
 CUSTOMER DRAWING