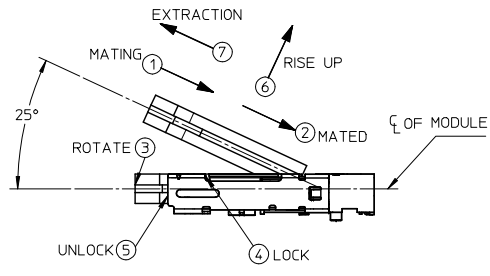
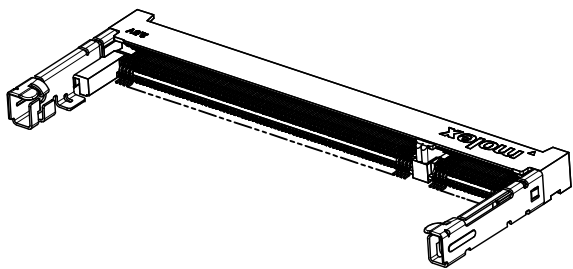


- NOTE :
- MATERIAL:
HOUSING: LCP - UL94V-0, COLOUR: BLACK
CONTACTS: COPPER ALLOY
LOCK LEVER: STAINLESS STEEL
 - FINISH:
CONTACT AREA: REFER TABLE IN SHEET 2.
SOLDER TAIL AREA: REFER TABLE IN SHEET 2
LOCK LEVER SOLDER PAD: 100HM/2.54UM MATTE TIN OVER 50HM/1.27UM NICKEL.
 - PRODUCT SPECIFICATION : REFERE TABLE IN SHEET 2.
 - PART SHALL BE PACKED IN TRAY / TAPE & REEL.
 - RECOMMENDED MODULE LAYOUT SHALL BE AS PER JEDEC MO-224.

- EDGE OF CONTACT PADS SHALL BE FREE OF BURRS AND EXTERNAL TIE BARS.
- THE ADDITION OF THIS BEVEL IS A FABRICATION OPTION AND IS NOT REQUIRED. THE BEVEL AIDS THE INSERTION OF THE MODULE INTO THE CONNECTOR. THE BEVEL IS NOT TO HIT THE PLATED CONTACTS.
- COPLANARITY INCLUDES HOLD DOWN 0.1 MAX.
- BORDER OF COMPONENT AREA.
- SUPPLY VOLTAGE TO BE INDICATED ON HOUSING. (SEE TABLE IN SHT 1)
- MOLEX LOGO, DATE CODE & PART NO. TO BE INDICATED ON HOUSING.

CUST REQ DIM ADD ELC NO: S2010-0072 DRWN:VMANICKAM 2009/07/31 CHKD:CTEH 2009/07/31 APPR:SHLENI 2009/08/01 REV: A3	QUALITY SYMBOLS	GENERAL TOLERANCES (UNLESS SPECIFIED)	DIMENSION STYLE	SCALE	DESIGN UNITS	THIRD ANGLE PROJECTION																		
	$\nabla=0$ $\nabla=0$	<table border="1"> <tr> <th></th> <th>mm</th> <th>INCH</th> </tr> <tr> <td>4 PLACES</td> <td>± ---</td> <td>± ---</td> </tr> <tr> <td>3 PLACES</td> <td>± ---</td> <td>± ---</td> </tr> <tr> <td>2 PLACES</td> <td>± 0.2</td> <td>± ---</td> </tr> <tr> <td>1 PLACE</td> <td>± ---</td> <td>± ---</td> </tr> <tr> <td colspan="3">ANGULAR ± 1°</td> </tr> </table>		mm	INCH	4 PLACES	± ---	± ---	3 PLACES	± ---	± ---	2 PLACES	± 0.2	± ---	1 PLACE	± ---	± ---	ANGULAR ± 1°			MM ONLY	NTS	METRIC	
		mm	INCH																					
	4 PLACES	± ---	± ---																					
3 PLACES	± ---	± ---																						
2 PLACES	± 0.2	± ---																						
1 PLACE	± ---	± ---																						
ANGULAR ± 1°																								
DRAFT WHERE APPLICABLE MUST REMAIN WITHIN DIMENSIONS	DRAWN BY: DWLEE01 CHECKED BY: VMANICKAM APPROVED BY: SHLENI DATE: 2007/07/16 DATE: 2007/11/14 DATE: 2007/11/15	TITLE	DDR/DDR2 SO DIMM 200 CKTS, 5.2MM HEIGHT STANDARD ORIENTATION MOLEX INCORPORATED																					
			MATERIAL NO.	DOCUMENT NO.	SHEET NO.																			
			SEE TABLE	SD-78308-001	1 OF 6																			

10 9 8 7 6 5 4 3 2 1



MATE AND UNMATE GUIDE
 MATE: ① → ④
 UNMATE: ⑤ → ⑦

PART NO.	PACKAGING	TYPE	DIM'A'	DIM'B'	DIM'C'	VOLTAGE	CONTACT AREA FINISH	SOLDER TAIL FINISH	PRODUCT SPECIFICATION
783081130	TRAY	DDR	18.45	1.80	1.50	2.5 V	30μN/0.76μM GOLD OVER 50μN/1.27μM NICKEL	100μN/2.54μM MATTE TIN OVER 50μN/1.27μM NICKEL	PS-78308-001
783081730	TAPE & REEL								
783082230	TRAY	DDR2	17.55	2.70	2.40	1.8 V	15μN/0.38μM GOLD OVER 50μN/1.27μM NICKEL	100μN/2.54μM MATTE TIN OVER 50μN/1.27μM NICKEL	PS-78308-002
783082730	TAPE & REEL								
783081115	TRAY	DDR	18.45	1.80	1.50	2.5 V	15μN/0.38μM GOLD OVER 50μN/1.27μM NICKEL	100μN/2.54μM MATTE TIN OVER 50μN/1.27μM NICKEL	PS-78308-002
783081715	TAPE & REEL								
783082215	TRAY	DDR2	17.55	2.70	2.40	1.8 V	30μN/0.76μM GOLD OVER 50μN/1.27μM NICKEL	GOLD FLASH OVER 50μN/1.27μM NICKEL	PS-78308-001
783082715	TAPE & REEL								
783082232	TRAY	DDR2	17.55	2.70	2.40	1.8 V	30μN/0.76μM GOLD OVER 50μN/1.27μM NICKEL	GOLD FLASH OVER 50μN/1.27μM NICKEL	PS-78308-001
783082732	TAPE & REEL								

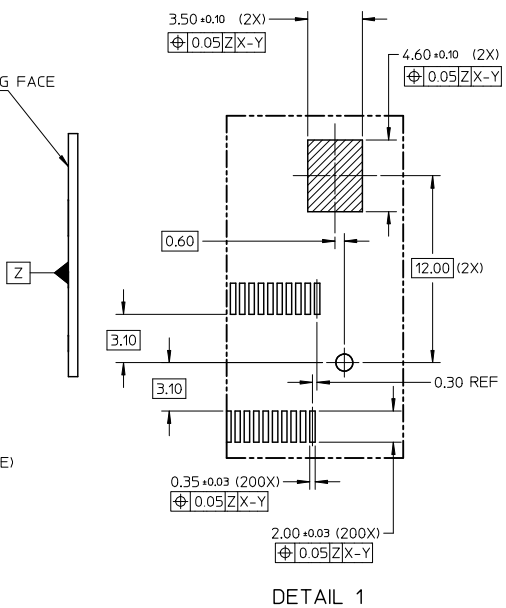
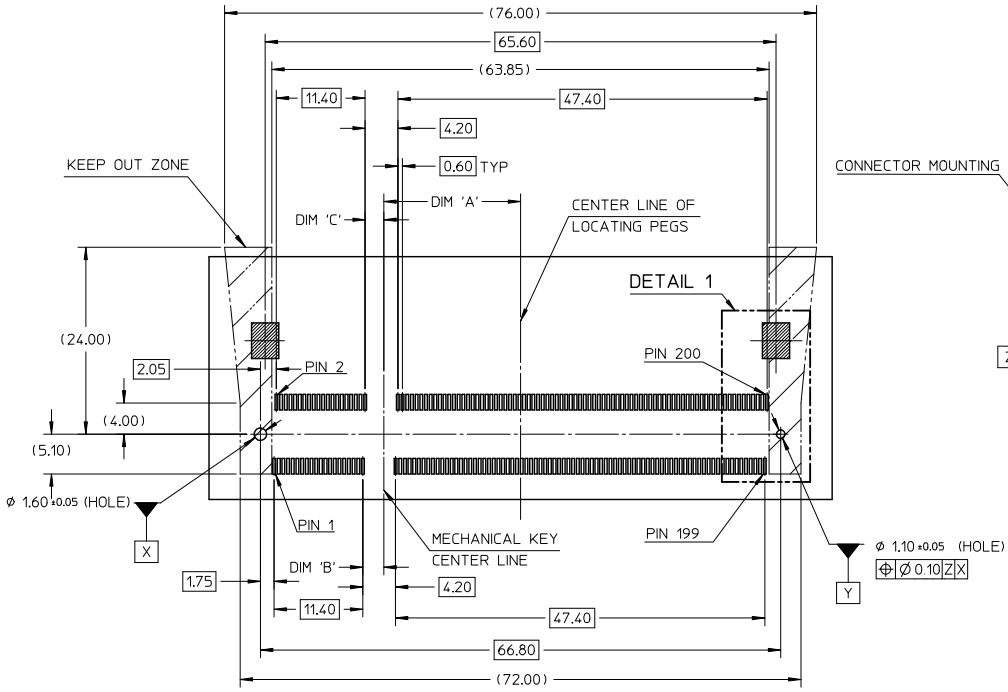
CUST REQ DIM ADD EC NO: S2010-0072 DRWN:VMANICKAM CHYK:CCJTEH APPR:SHLENI 2009/07/31 2009/07/31 2009/08/01	QUALITY SYMBOLS	GENERAL TOLERANCES (UNLESS SPECIFIED)	DIMENSION STYLE	SCALE	DESIGN UNITS	THIRD ANGLE PROJECTION																		
	$\nabla=0$ $\nabla=0$	<table border="1"> <tr><th></th><th>mm</th><th>INCH</th></tr> <tr><td>4 PLACES</td><td>± ---</td><td>± ---</td></tr> <tr><td>3 PLACES</td><td>± ---</td><td>± ---</td></tr> <tr><td>2 PLACES</td><td>± 0.2</td><td>± ---</td></tr> <tr><td>1 PLACE</td><td>± ---</td><td>± ---</td></tr> <tr><td colspan="3">ANGULAR ± 1°</td></tr> </table>		mm	INCH	4 PLACES	± ---	± ---	3 PLACES	± ---	± ---	2 PLACES	± 0.2	± ---	1 PLACE	± ---	± ---	ANGULAR ± 1°			MM ONLY	NTS	METRIC	
		mm	INCH																					
	4 PLACES	± ---	± ---																					
3 PLACES	± ---	± ---																						
2 PLACES	± 0.2	± ---																						
1 PLACE	± ---	± ---																						
ANGULAR ± 1°																								
DRAFT WHERE APPLICABLE MUST REMAIN WITHIN DIMENSIONS	DRAWN BY: DWLEE01 CHECKED BY: VMANICKAM APPROVED BY: SHLENI DATE: 2007/07/16 DATE: 2007/11/14 DATE: 2007/11/15	TITLE	DDR/DDR2 SO DIMM 200 CKTS, 5.2MM HEIGHT STANDARD ORIENTATION																					
A3	MATERIAL NO. SEE TABLE	MOLEX INCORPORATED	DOCUMENT NO. SD-78308-001	SHEET NO. 2 OF 6																				

tb_frame_A3_P_AM.T
 Rev. E 2006/04/15

9 8 7 6 5 4 3 2 1

10 9 8 7 6 5 4 3 2 1

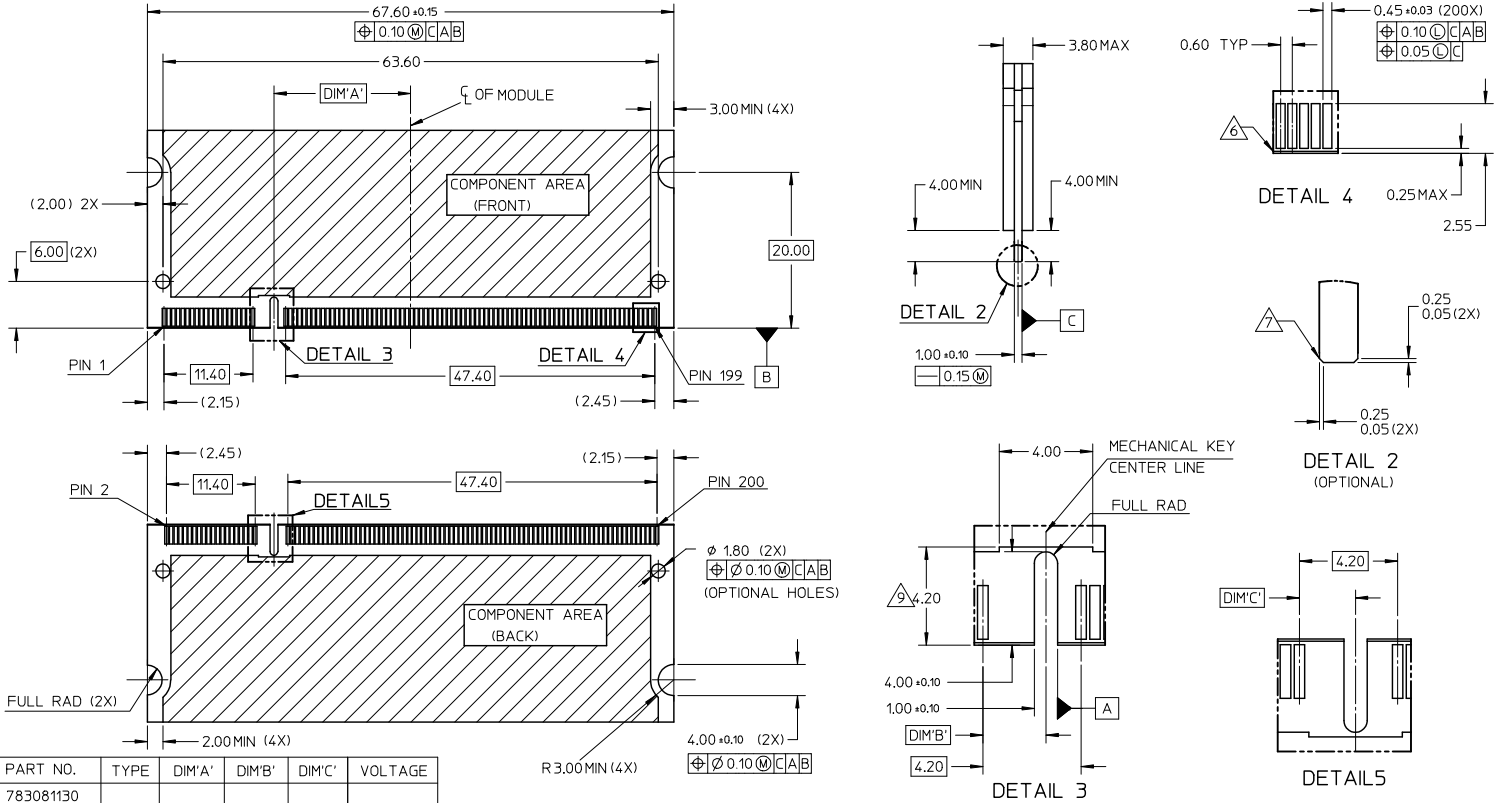
RECOMMENDED PCB LAYOUT FOR STANDARD ORIENTATION (TOP VIEW)



PART NO.	TYPE	DIM'A'	DIM'B'	DIM'C'	VOLTAGE
783081130	DDR	18.45	1.80	1.50	2.5 V
783081730					
783082230	DDR2	17.55	2.70	2.40	1.8 V
783082730					
783081115	DDR	18.45	1.80	1.50	2.5 V
783081715					
783082215	DDR2	17.55	2.70	2.40	1.8 V
783082715					
783082232	DDR2	17.55	2.70	2.40	1.8 V
783082732					

CUST REQ DIM ADD ELC NO: S2010-0072 DRWN:VMANICKAM CHYK:CTEH APPR:SHLENI 2009/07/31 2009/07/31 2009/08/01	QUALITY SYMBOLS ▽=0 ▽=0	GENERAL TOLERANCES (UNLESS SPECIFIED)		DIMENSION STYLE MM ONLY		SCALE NTS	DESIGN UNITS METRIC	THIRD ANGLE PROJECTION						
		4 PLACES ± --- ± ---	3 PLACES ± --- ± ---	2 PLACES ± 0.2 ± ---	1 PLACE ± --- ± ---	ANGULAR ± 1°	DRAFT WHERE APPLICABLE MUST REMAIN WITHIN DIMENSIONS	DRAWN BY DWLEE01	DATE 2007/07/16	CHECKED BY VMANICKAM	DATE 2007/11/14	APPROVED BY SHLENI	DATE 2007/11/15	TITLE DDR/DDR2 SO DIMM 200 CKTS, 5.2MM HEIGHT STANDARD ORIENTATION
		MATERIAL NO. SEE TABLE		MOLEX INCORPORATED		DOCUMENT NO. SD-78308-001	SHEET NO. 3 OF 6							
		THIS DRAWING CONTAINS INFORMATION THAT IS PROPRIETARY TO MOLEX INCORPORATED AND SHOULD NOT BE USED WITHOUT WRITTEN PERMISSION												

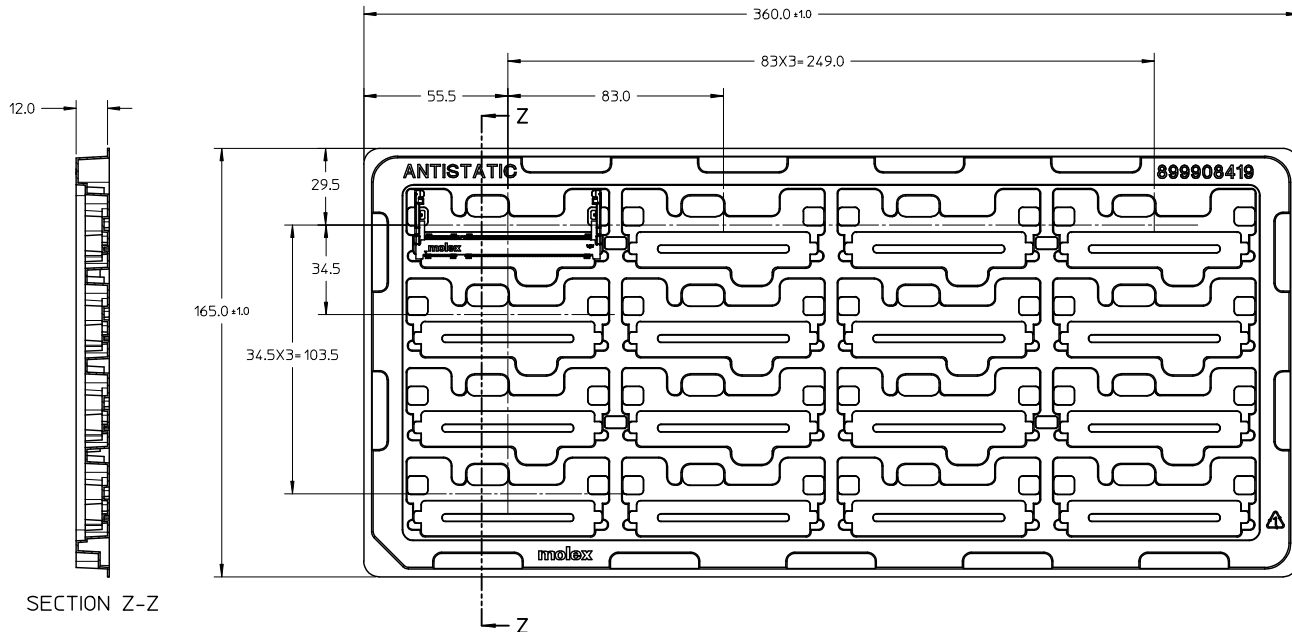
RECOMMENDED MATING PCB CONFIGURATION



PART NO.	TYPE	DIM'A'	DIM'B'	DIM'C'	VOLTAGE
783081130	DDR	18.45	1.80	1.50	2.5 V
783081730					
783082230	DDR2	17.55	2.70	2.40	1.8 V
783082730					
783081115	DDR	18.45	1.80	1.50	2.5 V
783081715					
783082215	DDR2	17.55	2.70	2.40	1.8 V
783082715					
783082232	DDR2	17.55	2.70	2.40	1.8 V
783082732					

CUST REQ DIM ADD EIC NO: SZ2010-0072 DRWN:VMANICKAM CHKD:CTEH APPR:SHLENI 2009/07/31 2009/07/31 2009/08/01 A3	QUALITY SYMBOLS ▽=0 ▽=0	GENERAL TOLERANCES (UNLESS SPECIFIED)		DIMENSION STYLE MM ONLY		SCALE NTS	DESIGN UNITS METRIC	THIRD ANGLE PROJECTION	
		4 PLACES ± --- ± --- 3 PLACES ± --- ± --- 2 PLACES ± 0.2 ± --- 1 PLACE ± --- ± ---	mm INCH	DRAWN BY DWLEE01	DATE 2007/07/16	TITLE DDR/DDR2 SO DIMM 200 CKTS, 5.2MM HEIGHT STANDARD ORIENTATION			
		ANGULAR ± 1°		CHECKED BY VMANICKAM	DATE 2007/11/14	MOLEX INCORPORATED			
		DRAFT WHERE APPLICABLE MUST REMAIN WITHIN DIMENSIONS		APPROVED BY SHLENI	DATE 2007/11/15	MATERIAL NO. SEE TABLE	DOCUMENT NO. SD-78308-001	SHEET NO. 4 OF 6	

10 9 8 7 6 5 4 3 2 1



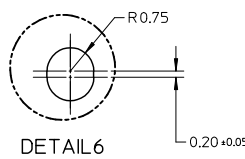
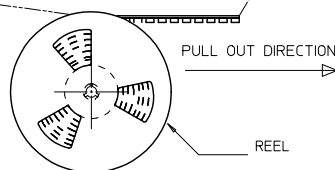
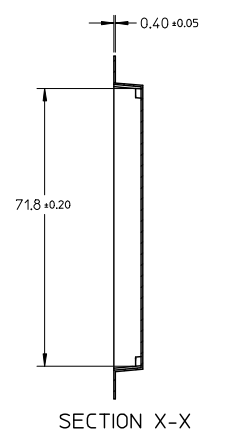
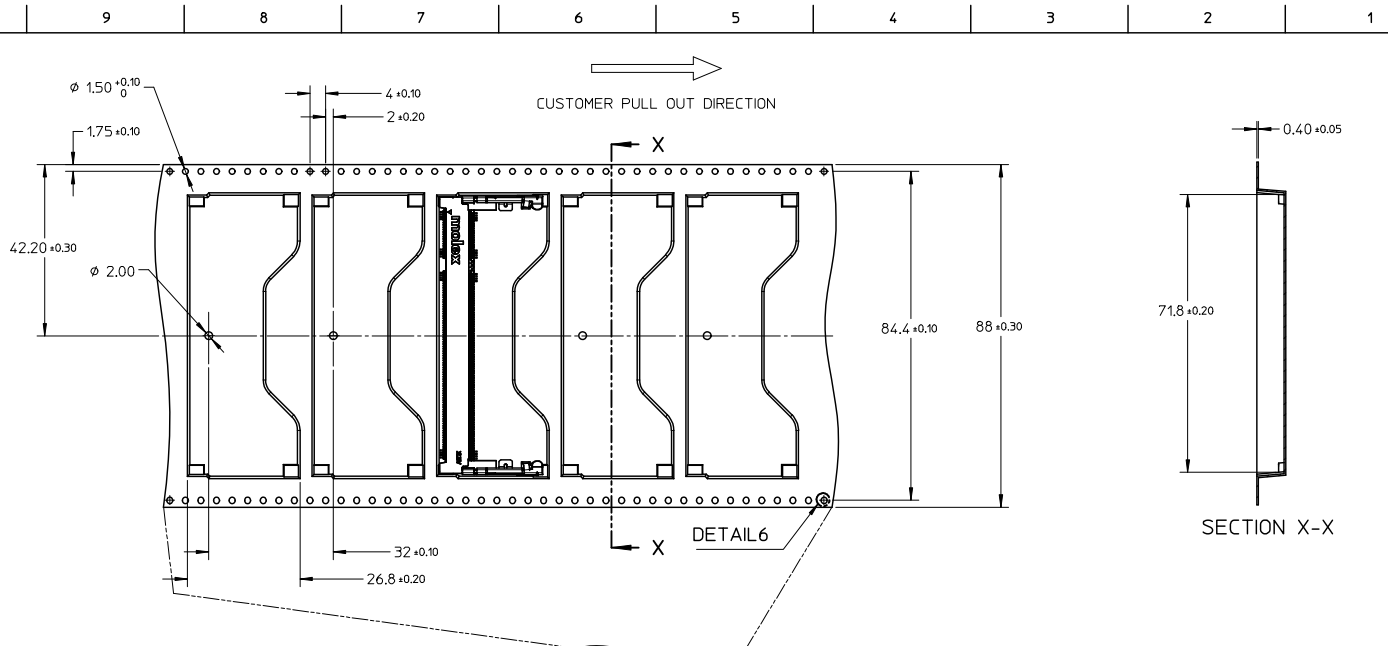
SECTION Z-Z

NOTES:

- 1. NO OF CAVITY : 4 X 4 = 16
- 2. UNSPECIFIED TOLERANCE FOR TRAY +0.5

CUST REQ DIM ADD EEC NO: SZ010-0072 DRWN:VMANICKAM CHYK:CCIEH APPR:SHLENI 2009/07/31 2009/07/31 2009/08/01	QUALITY SYMBOLS ▽=0 ▽=0	GENERAL TOLERANCES (UNLESS SPECIFIED)		DIMENSION STYLE	SCALE	DESIGN UNITS	THIRD ANGLE PROJECTION	
		mm	INCH	MM ONLY	NTS	METRIC		
		4 PLACES ± ---	± ---	DRAWN BY	DATE	TITLE		
		3 PLACES ± ---	± ---	DWLEE01	2007/07/16	DDR/DDR2 SO DIMM 200 CKTS, 5.2MM HEIGHT STANDARD ORIENTATION		
2 PLACES ± 0.2	± ---	CHECKED BY	DATE	MOLEX INCORPORATED MOLEX INCORPORATED				
1 PLACE ± ---	± ---	VMANICKAM	2007/11/14					
ANGULAR ± 1°		APPROVED BY	DATE	MATERIAL NO.	DOCUMENT NO.	SHEET NO.		
DRAFT WHERE APPLICABLE MUST REMAIN WITHIN DIMENSIONS		SHLENI	2007/11/15	SEE TABLE	SD-78308-001	5 OF 6		
				SIZE	THIS DRAWING CONTAINS INFORMATION THAT IS PROPRIETARY TO MOLEX INCORPORATED AND SHOULD NOT BE USED WITHOUT WRITTEN PERMISSION			
				A3				

9 8 7 6 5 4 3 2 1



- NOTES:
- LEADER AND TRAILER TAPE
 - PEELING OFF FORCE OF THE TOP TAPE: 10 - 150gf. (PEELING DIRECTION AS SHOWN IN FOLLOWING FIGURE)
 - TAPE AND REEL SPECIFICATION IS AS PER EIA-481.
 - TAPE AND REEL QUANTITY : 200 PCS/ REEL.
 - THE TAPE IS TREATED FOR ANTI-STATIC.

CUST REQ DIM ADD EC NO: S2010-0072 DRAWN: VMANICKAM CHKD: CTEH APPR: SILENI A3	QUALITY SYMBOLS ▽=0 ▽=0	GENERAL TOLERANCES (UNLESS SPECIFIED)		DIMENSION STYLE	SCALE	DESIGN UNITS	THIRD ANGLE PROJECTION	
		mm	INCH	MM ONLY	NTS	METRIC		
		4 PLACES ± --- ± ---		DRAWN BY	DATE	TITLE		
		3 PLACES ± --- ± ---		DWLEE01	2007/07/16	DDR/DDR2 SO DIMM 200 CKTS, 5.2MM HEIGHT STANDARD ORIENTATION		
		2 PLACES ± 0.2 ± ---		CHECKED BY	DATE			
		1 PLACE ± --- ± ---		VMANICKAM	2007/11/14			
		ANGULAR ± 1 °		APPROVED BY	DATE			
				SILENI	2007/11/15			
		DRAFT WHERE APPLICABLE MUST REMAIN WITHIN DIMENSIONS		MATERIAL NO.	DOCUMENT NO.			
				SEE TABLE	SD-78308-001			
				SIZE	THIS DRAWING CONTAINS INFORMATION THAT IS PROPRIETARY TO MOLEX INCORPORATED AND SHOULD NOT BE USED WITHOUT WRITTEN PERMISSION			
				A3	6 OF 6			