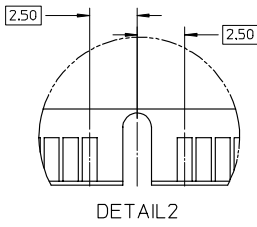
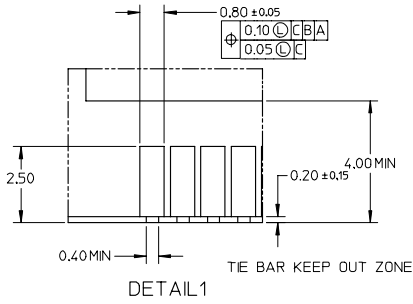
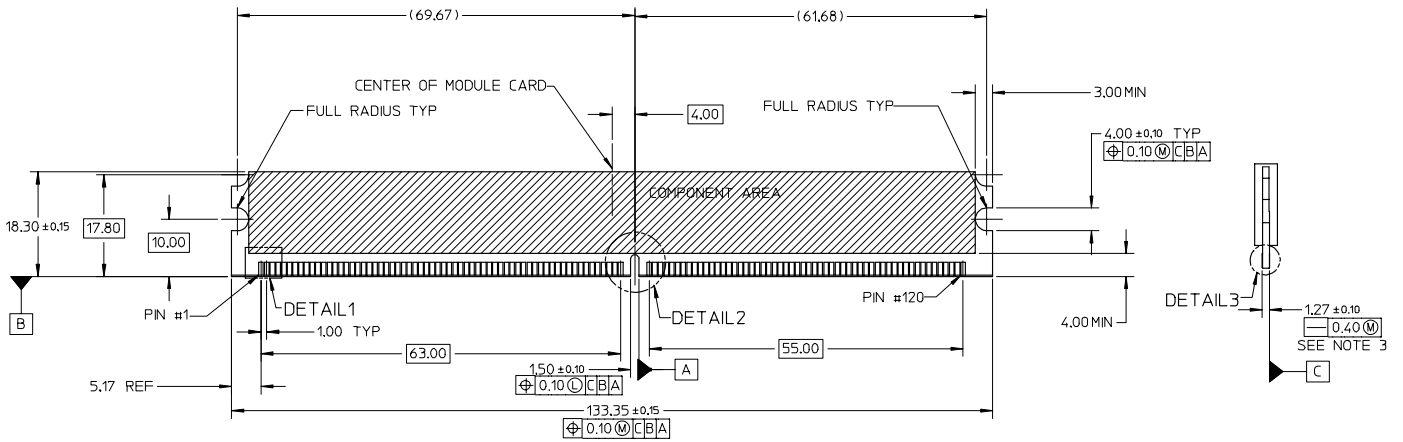


- NOTES:
- MATERIALS  
HOUSING - HIGH TEMP NYLON GLASS FILLED, UL 94V-0, COLOR - BLACK  
EJECTOR - HIGH TEMP NYLON 46, COLOR: BLACK  
TERMINAL - PHOSPHOR BRONZE
  - PLATING - SEE TABLE IN SHEET 4.
  - CARD SLOT ACCEPTS 1.27±0.10MM MODULE THICKNESS.
  - RECOMMENDED MODULE LAYOUT SHALL BE AS PER JEDEC MO-237.
  - REFER TO PRODUCT SPEC, PS-78065-100 FOR PERFORMANCE SPECIFICATIONS.
  - PRODUCT SHALL BE PACKED IN TRAY.
  - PRODUCT SHALL HAVE DATE CODE STAMPED ON SIDE OF HOUSING.
  - KEEP OUT AREA IS THE AREA WHERE THE CONNECTOR IS MOUNTED ONTO THE PCB WHICH DOES NOT INCLUDE THE LATCH.
  - KEEP OUT ZONE AS PER JEDEC S0-001.
  - DIMM MODULE SEATING PLANE FROM TOP OF PCB.
  - CONTACT MOLEX FOR AVAILABILITY OF PRODUCT OPTIONS.
  - PART NUMBER SHALL BE MARKED LEGIBLY AS 78065-\*\*\*\*.

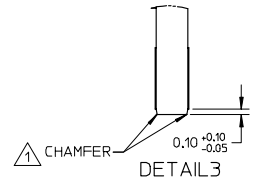
UPDATE MIC DWG EC NO: S2008-0319 DRAWN: MTEO CHKD: CCHEN APPR: SHLENI 2007/10/18 2007/10/19 2007/10/22	QUALITY SYMBOLS ▽=0 ▽=0	GENERAL TOLERANCES (UNLESS SPECIFIED) mm INCH 4 PLACES ± --- ± --- 3 PLACES ± --- ± --- 2 PLACES ± 0.20 ± --- 1 PLACE ± --- ± --- ANGULAR ± 5 °	DIMENSION STYLE MM ONLY DRAWN BY DATE VMANICKAM 2006/04/11 CHECKED BY DATE SHLENI 2006/06/22 APPROVED BY DATE SRRAMESH 2006/06/22	SCALE NTS DESIGN UNITS METRIC	THIRD ANGLE PROJECTION	TITLE VLP DDR2 DIMM, 1MM PITCH 240 CKTS, VERT. PRESSFIT	MOLEX MOLEX INCORPORATED	MATERIAL NO. SD-78065-001	SHEET NO. 1 OF 4

10 9 8 7 6 5 4 3 2 1

RECOMMENDED MODULE LAYOUT



KEY LOCATION	VOLTAGE
CENTER	1.8V



NOTES:  
 1. MODULE CARD USED FOR TESTS ARE WITH 0.10MM CHAMFER.

UPDATE MIC DWG EC NO: S2008-0319 DRAWN: MTEO CHECKED: CTEH APPR: SHLENI 2007/10/18 2007/10/19 2007/10/22	QUALITY SYMBOLS ▽=0 ▽=0	GENERAL TOLERANCES (UNLESS SPECIFIED) mm INCH 4 PLACES ± --- ± --- 3 PLACES ± --- ± --- 2 PLACES ± 0.20 ± --- 1 PLACE ± --- ± --- ANGULAR ± 5 °	DIMENSION STYLE MM ONLY	SCALE NTS	DESIGN UNITS METRIC	THIRD ANGLE PROJECTION	
			DRAWN BY VMANICKAM DATE 2006/04/11	CHECKED BY SHLENI DATE 2006/06/22	APPROVED BY SRRAMESH DATE 2006/06/22	TITLE VLP DDR2 DIMM, 1MM PITCH 240 CKTS, VERT. PRESSFIT	MOLEX INCORPORATED
REV A1	DESCRIPTION DRAFT WHERE APPLICABLE MUST REMAIN WITHIN DIMENSIONS	SIZE A3	THIS DRAWING CONTAINS INFORMATION THAT IS PROPRIETARY TO MOLEX INCORPORATED AND SHOULD NOT BE USED WITHOUT WRITTEN PERMISSION				SHEET NO. 2 OF 4

9

8

7

6

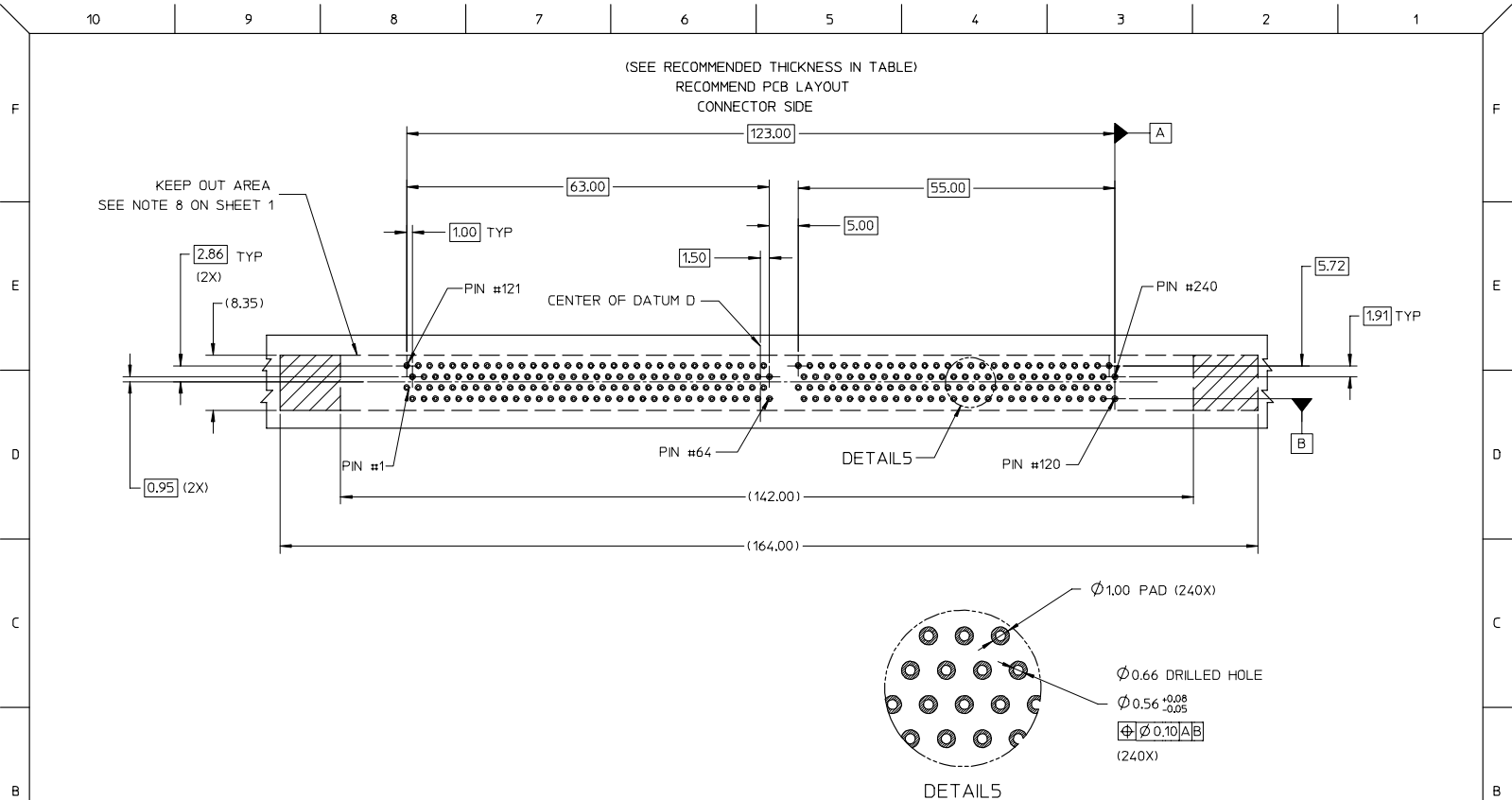
5

4

3

2

1



UPDATE MIC DWG EC NO: S2008-0319 2007/10/18 DRAWN: MTEO 2007/10/19 CHKD: CCHN APPR: SHLENI 2007/10/22	QUALITY SYMBOLS ▽=0 ▽=0	GENERAL TOLERANCES (UNLESS SPECIFIED)		DIMENSION STYLE MM ONLY		SCALE NTS	DESIGN UNITS METRIC	THIRD ANGLE PROJECTION	
		4 PLACES	± ---	± ---	DRAWN BY VMANICKAM	DATE 2006/04/11	TITLE VLP DDR2 DIMM, 1MM PITCH 240 CKTS, VERT. PRESSFIT		
		3 PLACES	± ---	± ---	CHECKED BY SHLENI	DATE 2006/06/22	MOLEX INCORPORATED		
		2 PLACES	± 0.20	± ---	APPROVED BY SRRAMESH	DATE 2006/06/22	MATERIAL NO. DOCUMENT NO. SD-78065-001		
1 PLACE	± ---	± ---	ANGULAR ± 5 °		SEE TABLE		SHEET NO. 3 OF 4		
DRAFT WHERE APPLICABLE MUST REMAIN WITHIN DIMENSIONS		SIZE A3		THIS DRAWING CONTAINS INFORMATION THAT IS PROPRIETARY TO MOLEX INCORPORATED AND SHOULD NOT BE USED WITHOUT WRITTEN PERMISSION					

10 9 8 7 6 5 4 3 2 1

TIN OPTION

PART NO.	VOLTAGE KEY POS.	VOLTAGE	DIM 'P'	RECOMMENDED PCB THICKNESS	CONTACT AREA PLATING OPTION	SOLDERTAIL PLATING OPTION	LATCH COLOR
78065-8001	CENTER	1.8V	3.30	3.60	0.76μM/30μN MIN GOLD OVER 1.27μM/50μN MIN NICKEL UNDERPLATE	0.38-1.52μM/15-60μN TIN OVER 1.27μM/50μN MIN NICKEL UNDERPLATE	BLACK
78065-8002			4.20	4.57			

TIN/LEAD OPTION

PART NO.	VOLTAGE KEY POS.	VOLTAGE	DIM 'P'	RECOMMENDED PCB THICKNESS	CONTACT AREA PLATING OPTION	SOLDERTAIL PLATING OPTION	LATCH COLOR
78065-8101	CENTER	1.8V	3.30	3.60	0.76μM/30μN MIN GOLD OVER 1.27μM/50μN MIN NICKEL UNDERPLATE	0.38-1.52μM/15-60μN TIN/LEAD OVER 1.27μM/50μN MIN NICKEL UNDERPLATE	BLACK
78065-8102			4.20	4.57			

UPDATE MIC DWG EC NO: S2008-0319 DRAWN: MTEO CHECKED: CJEN APPR: SHLENI 2007/10/18 2007/10/19 2007/10/22	QUALITY SYMBOLS	GENERAL TOLERANCES (UNLESS SPECIFIED)	DIMENSION STYLE	SCALE	DESIGN UNITS	THIRD ANGLE PROJECTION																		
	$\nabla=0$ $\sphericalangle=0$	<table border="1"> <tr> <th></th> <th>mm</th> <th>INCH</th> </tr> <tr> <td>4 PLACES</td> <td>± .004</td> <td>± .0015</td> </tr> <tr> <td>3 PLACES</td> <td>± .005</td> <td>± .002</td> </tr> <tr> <td>2 PLACES</td> <td>± 0.020</td> <td>± .0008</td> </tr> <tr> <td>1 PLACE</td> <td>± .050</td> <td>± .0025</td> </tr> <tr> <td>ANGULAR</td> <td colspan="2">± 5°</td> </tr> </table>		mm	INCH	4 PLACES	± .004	± .0015	3 PLACES	± .005	± .002	2 PLACES	± 0.020	± .0008	1 PLACE	± .050	± .0025	ANGULAR	± 5°		MM ONLY	NTS	METRIC	
		mm	INCH																					
	4 PLACES	± .004	± .0015																					
3 PLACES	± .005	± .002																						
2 PLACES	± 0.020	± .0008																						
1 PLACE	± .050	± .0025																						
ANGULAR	± 5°																							
DESCRIPTION	DRAFT WHERE APPLICABLE MUST REMAIN WITHIN DIMENSIONS	SEE TABLE	DRAWN BY: VMANICKAM DATE: 2006/04/11 CHECKED BY: SHLENI DATE: 2006/06/22 APPROVED BY: SRRAMESH DATE: 2006/06/22	TITLE: VLP DDR2 DIMM, 1MM PITCH 240 CKTS, VERT. PRESSFIT MOLEX INCORPORATED																				
REV: A1			MATERIAL NO.	DOCUMENT NO.	SHEET NO.																			
			SIZE: A3	SD-78065-001			4 OF 4																	
THIS DRAWING CONTAINS INFORMATION THAT IS PROPRIETARY TO MOLEX INCORPORATED AND SHOULD NOT BE USED WITHOUT WRITTEN PERMISSION																								

tb\_frame\_A3\_P\_AM\_T  
Rev. E 2006/04/15

9 8 7 6 5 4 3 2 1