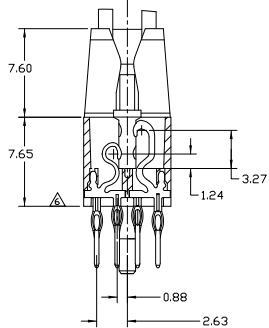
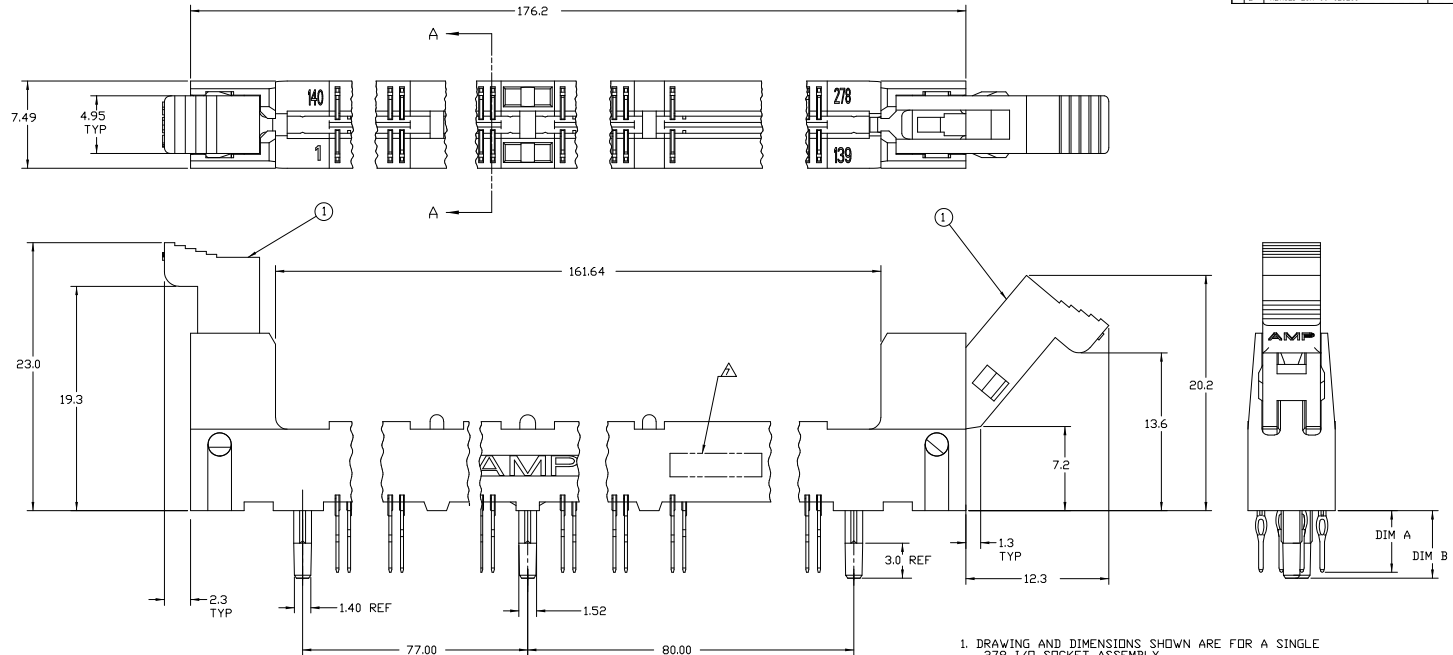


REVISED		REVISIONS	
ES	00	DESCRIPTION	DATE
B		REVISED ECR-06-025205	280216 S.Y



BROWN	5.79	4.21	278	292439-2
BLUE	5.79	5.29	278	292439-1
COLOR ①	DIM_B	DIM_A	POS	PART NUMBER

1. DRAWING AND DIMENSIONS SHOWN ARE FOR A SINGLE 278 I/O SOCKET ASSEMBLY.
2. THE POST DIAMETER REFERENCE DIMENSIONS EXCLUDE THE POSTS' FLUTING FEATURES.

△ CONTACT PADS SHALL BE PLATED WITH 0.0008 [0.0003] MINIMUM THICK GOLD OVER 0.0038 [0.0015] MINIMUM THICK NICKEL.

△ MATERIAL:
 HOUSING- HIGH TEMPERATURE NYLON, BLACK.
 EXTRACTORS- HIGH TEMPERATURE NYLON, BLUE, BROWN.
 CONTACTS- PHOSPHOR BRONZE WITH 0.00076 [0.00030] MIN THICK GOLD OVER 0.00381 [0.00150] MIN THICK NICKEL IN CONTACT AREA AND 0.00381 [0.00150] MIN THICK TIN-LEAD OVER 0.00127 [0.00050] MIN THICK NICKEL ON SOLDER TAIL.

△ RECOMMENDED PCB DRILLED HOLE SIZE BEFORE PLATING 0.89±0.013 FINISHED PLATED HOLE SIZE OF 0.76±0.05 [0.30±.002]

△ PCB SURFACE

△ DATE CODE LOCATED APPROX. AS SHOWN.

THIS DRAWING IS A CONTROLLED DOCUMENT		REVISED	REVISED	REVISED	REVISED
DATE	DESCRIPTION	BY	DATE	BY	DATE
108-1717	SOCKET ASSEMBLY, 16 BYTE DIMM, 1mm, 278 PRESS FIT				
CUSTOMER DRAWING		A1	00779	Q=292439	

