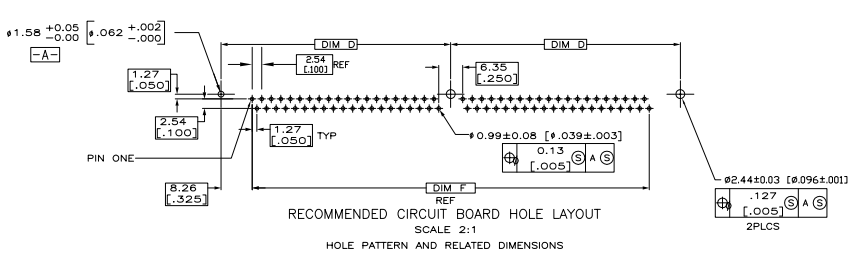


REV	DATE	DESCRIPTION	BY	CHK	APP
01		RELEASED PER ECR-10-008188			F C S Y

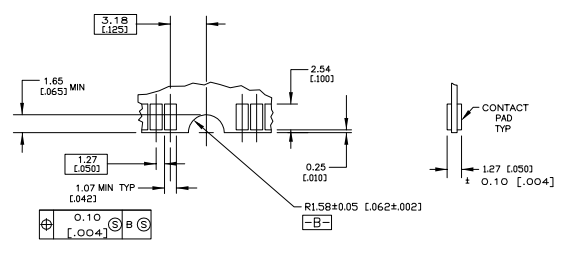
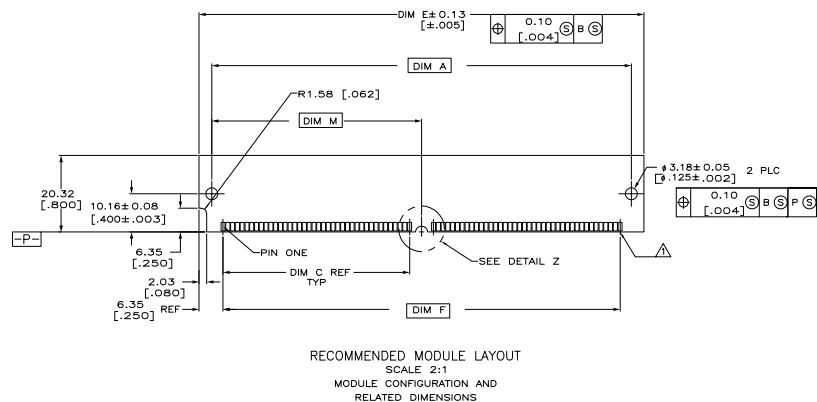
THIS DRAWING IS A CONTROLLED DOCUMENT.		REVISED BY	DATE	Type Electrical Corporation mt. Joy, Pa. 17052	
DESIGNED BY	DRYER/LEWIS	REVISED BY	DATE	SIMM II RTANG 1.27 [500]	
DRAWN BY		REVISED BY	DATE	1.27 [500] CL ASSY.	
CHECKED BY		REVISED BY	DATE	6.35 [250] HEIGHT	
APPROVED BY		REVISED BY	DATE	SIZE	
DATE		REVISED BY	DATE	A1 00779 (C)-5382486	
ISSUED TO		REVISED BY	DATE	CUSTOMER DRAWING	
SCALE		REVISED BY	DATE	SHEET 1 OF 2	

8	7	6	5	4	3	2	1			
REVISIONS							REV	DATE	BY	APP
GP	00									



▲ FOR OPTIMUM PERFORMANCE, CONTACT PAD PLATING SHOULD BE SMOOTH AND FLAT. COPPER CONTACT PADS ARE TO BE OVERPLATED WITH .00127[.00050] MIN THK NICKEL FOLLOWED WITH 0.00254[.000100] MIN THK TIN PLATING.

▲ 0.00381 [.000150] MIN. THK TIN OVER 0.00127 [.000050] MIN. THK NICKEL OVER ENTIRE CONTACT.



55.68	2.192	121.92	4.800	105.41	4.150	118.11	4.650	60.96	2.400	49.53	1.950	125.73	4.950	111.35	4.384	80	8-5382486-0
50.60	1.992	111.76	4.400	95.25	3.750	107.95	4.250	55.88	2.200	44.45	1.750	115.57	4.550	101.19	3.984	72	7-5382486-2
																POSN	PART NO.

THIS DRAWING IS A CONTROLLED DOCUMENT. **AMETEK** Type Electronic Component

DATE: 1/10/08
REV: 1
AUTHOR: [Blank]
CHECKER: [Blank]
APPROVER: [Blank]

SIZE: 4:1 (SEE SHEET 1)
DATE: 1/10/08
PART NO.: 8-5382486

REVISIONS
REV: 1
DATE: 1/10/08
BY: [Blank]
DESCRIPTION: SMIM II, RTANG, 1.27 [0.09] CL ASSY, 6.35 [.250] HOI

CUSTOMER DRAWING
DRAWN: [Blank]
CHECKED: [Blank]
DATE: 1/10/08
BY: [Blank]