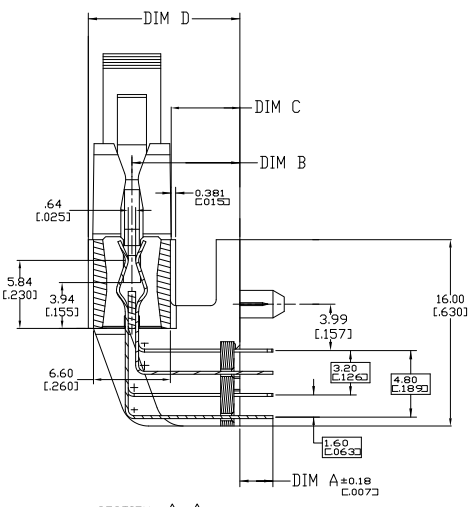
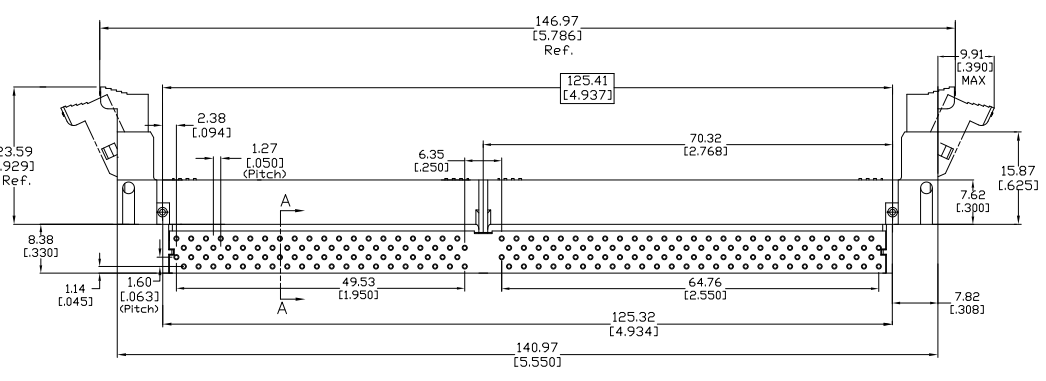


REV	DATE	DESCRIPTION	BY	APP
B		REVISED PER EDR-07-018297	3M6207	K.C.S.Y
B1		REVISED PER ECO-10-000444	19JAN10	KK JMMR

NOTES:

- ▲ MATERIAL:
HOUSING: HIGH TEMPERATURE NYLON
CONTACT: PHOSPHOR BRONZE
- ▲ FINISH:
CONTACT AREA:
0.000076(.000003) MIN THICK GOLD FLASH OVER
0.000510(.000020) MIN THICK PALLADIUM NICKEL
OR 0.00076(.000030) MIN THICK GOLD OVER
0.00381(.000150) MIN THICK NICKEL UNDERPLATE.
- SOLDER TAIL:
0.00381(.000150) MIN THICK MATTE TIN OVER
0.00064(.000025) MIN THICK NICKEL
- ▲ MODULE BOARD PADS:
FOR OPTIMUM PERFORMANCE, PADS SHOULD BE SMOOTH AND FLAT
PADS TO BE PLATED WITH:
0.00102(.000040) MIN THICK GOLD OVER
0.00127(.000050) MIN THICK NICKEL
- ▲ CONNECTOR MANUFACTURED WITH LUBRICANT
ADDED TO THE CONTACT INTERFACE.
- ▲ OBSOLETE PARTS: OBSOLETE CIS STREAMLINING
PER DRENAUD/D.SINISI



SECTION A-A
SCALE 6:1

10.80[.425]	3.68[.145]	7.11[.280]	3.18[.125]	DETAIL B	184 POS. DDR DRAM, 25 VOLT	5390447-7	▲
10.80[.425]	3.68[.145]	7.11[.280]	2.84[.112]	DETAIL B	184 POS. DDR DRAM, 25 VOLT	5390447-6	▲
12.95[.510]	5.83[.230]	9.27[.365]	3.18[.125]	DETAIL B	184 POS. DDR DRAM, 25 VOLT	5390447-5	▲
12.95[.510]	5.83[.230]	9.27[.365]	3.18[.125]	DETAIL B	184 POS. DDR DRAM, 25 VOLT	5390447-4	▲
12.95[.510]	5.83[.230]	9.27[.365]	3.68[.145]	DETAIL B	184 POS. DDR DRAM, 25 VOLT	5390447-3	▲
12.95[.510]	5.83[.230]	9.27[.365]	2.84[.112]	DETAIL B	184 POS. DDR DRAM, 25 VOLT	5390447-1	▲
DIM D	DIM C	DIM B	DIM A	KEY #1	PART DESCRIPTION	PART NUMBER	

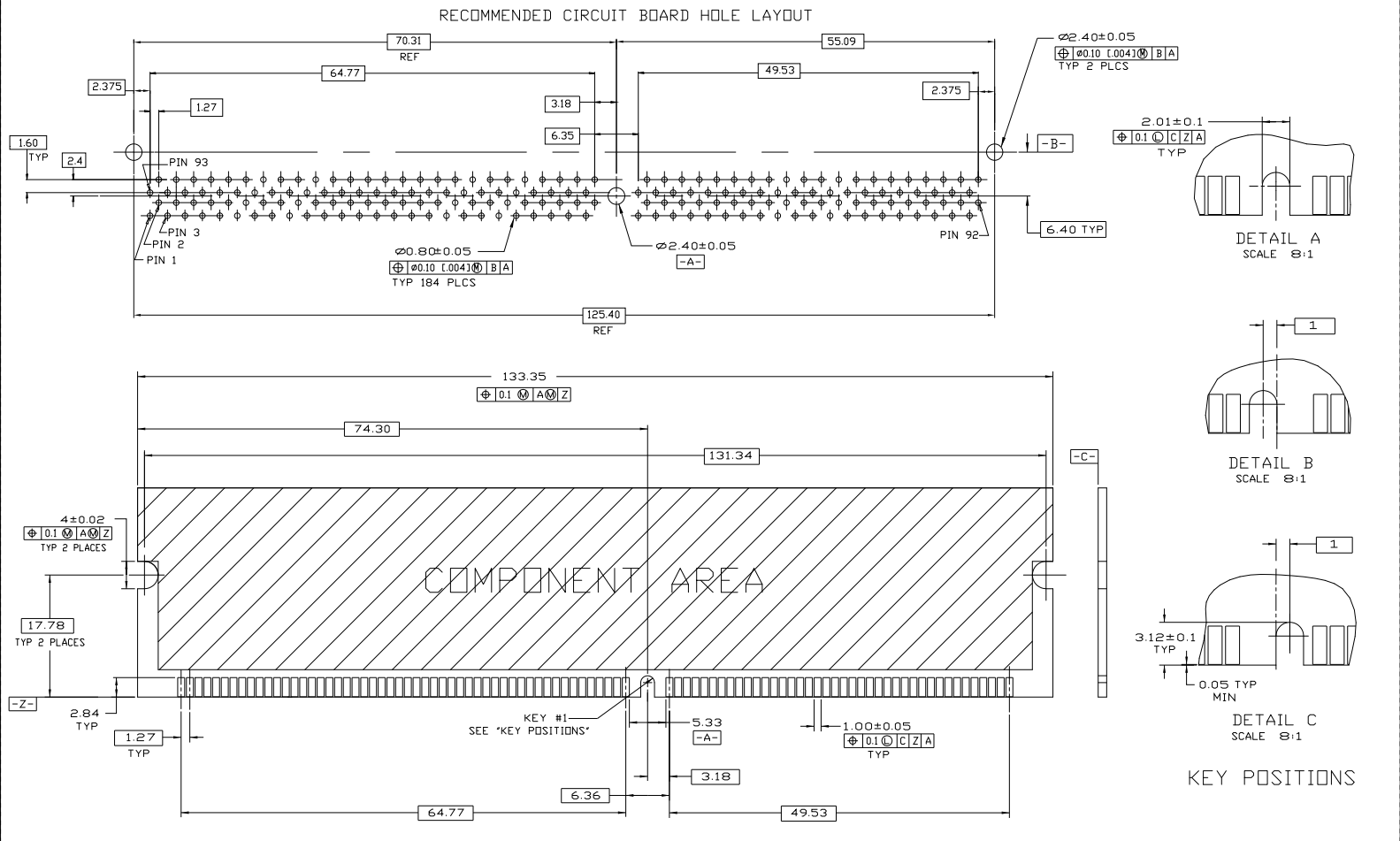
▲ OBSOLETE

THIS DRAWING IS A CONTROLLED DOCUMENT.

DESIGNER	DATE	REVISED	BY	APP
DR				

DIMENSIONS: (in INCHES)
 DIMENSIONS LISTED:
 DIMENSIONS: AS SHOWN
 UNLESS OTHERWISE SPECIFIED
 UNLESS OTHERWISE SPECIFIED

TITLE: SOCKET, DIMM, DRD, RIGHT ANGLE, 184 POS ROW 10 ROW SPACING LEAD-FREE
 SIZE: A1
 DATE: 00779
 DRAWING NO: 5390447
 CUSTOMER DRAWING: YES
 SCALE: 1:1
 SHEET: 1 OF 2
 REV: B1



RECOMMENDED MODULE LAYOUT
 SEE JEDEC SPEC. MO-206 FOR COMPLETE MODULE DETAILS
 1.27±0.10 THICK ACROSS CONTACT PADS
 SCALE 4:1

THIS DRAWING IS A CONTROLLED DOCUMENT.		THE MANAGER: _____ THE DESIGNER: _____ THE CHECKER: _____ THE DATE: _____		TYS Electronics Corporation Harrisburg, Pa 17105-3608	
DIMENSIONS (in INCHES)	DIMENSIONS LISTED: DIMENSIONS DIMENSIONS DIMENSIONS	SOCKET, DIMM, DDM, RIGHT ANGLE 184 POSITION, 1.60mm CONTACT PITCH LEAD-FREE	SIZE: A1 DATE: 00779 DRAWING NO: 5390447	REVISIONS: 1 SHEET: 2 OF: 2	CUSTOMER DRAWING