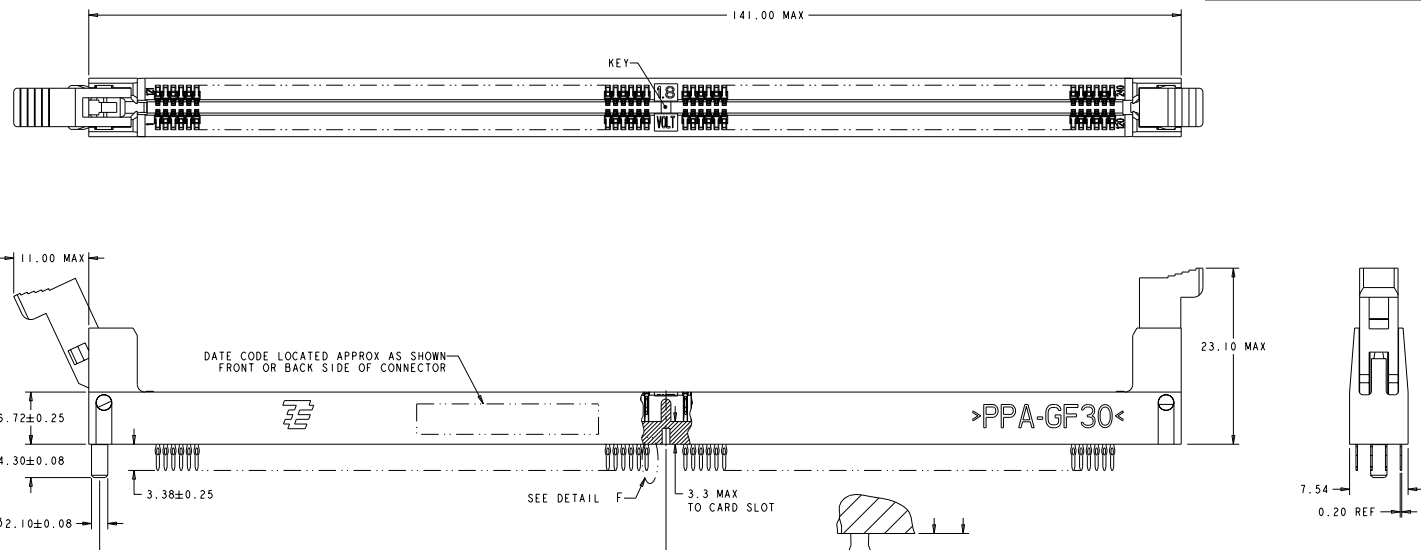
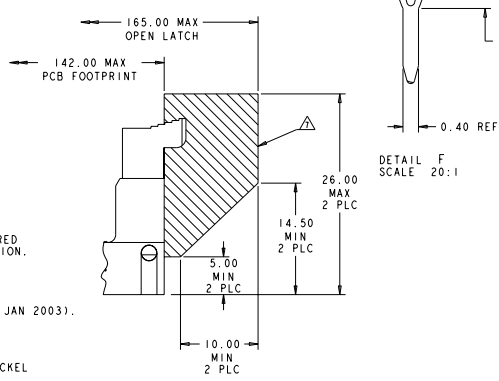


REV	DATE	DESCRIPTION	BY	CHK	APP
ES	00				
F1	ECR-10-013006				



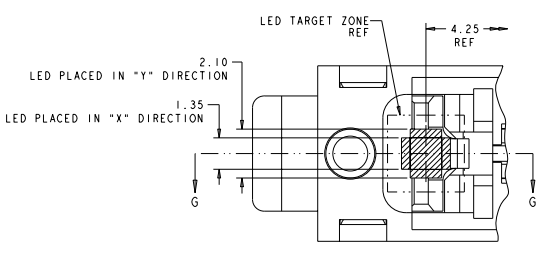
- MATERIALS:**
 HOUSING: HIGH TEMPERATURE NYLON, UL94 V-0
 EXTRACTOR: HIGH TEMPERATURE THERMOPLASTIC
 CONTACTS: PHOSPHOR BRONZE
- FINISH:**
 COMPLIANT PIN AREA: 0.00254 MIN THK TIN OVER 0.00127 MIN THK NICKEL
 INTERFACE: 0.00076 MIN THK GOLD OVER 0.00127 MIN THK NICKEL
- RIGHT HOLE IS GLOBAL D-E ORIGIN FOR ALL POSITIONAL TOLERANCES.
 LEFT AND RIGHT NON-PLATED THRU HOLES ESTABLISH \bar{E} .
- FINISHED HOLE SIZE: 0.15 MAXIMUM ANNULAR RING.
 COPPER PLATING: 0.050-0.025
 TIN-LEAD PLATING: 0.0124-0.0038
 FOR PTH TIN-LEAD PLATING ONLY, FINISHED HOLE TOLERANCE MAY BE
 +0.05/-0.058 IN ZONE I, AND ±0.076 IN ZONE II.
- KEEP OUT ZONE.
- HOLES INDICATED ARE PART OF THE STANDARD 240 POSITION FOOTPRINT, REQUIRED
 FOR THE SOLDER TAIL VERSION, AND MAY BE OMITTED FOR THE PRESS FIT VERSION.
- KEEP OUT AREA RESERVED FOR SOCKET EXTRACTORS, BOTH ENDS.
- LED LOCATION AS APPLICABLE PER CUSTOMER.
- PCB FOOTPRINT CONFORMS TO JEDEC SPECIFICATION SO-001 (REVISION LEVEL - JAN 2003).
- DATUM \bar{F} IS CONNECTOR SIDE SURFACE OF PCB.
- FINISH:**
 COMPLIANT PIN AREA: 0.00254 MIN THK TIN-LEAD OVER 0.00127 MIN THK NICKEL
 INTERFACE: 0.00076 MIN THK GOLD OVER 0.00127 MIN THK NICKEL
- FINISH:**
 COMPLIANT PIN AREA: 0.00254 MIN THK TIN-LEAD OVER 0.00127 MIN THK NICKEL
 INTERFACE: 0.00038 MIN THK GOLD OVER 0.00127 MIN THK NICKEL



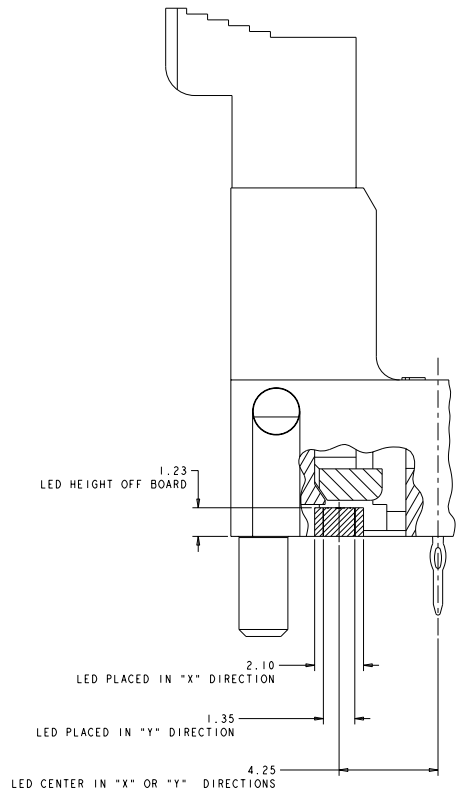
NATURAL	AMBER	0.00076 MIN	8-1489929-2
NATURAL	AMBER	0.00038 MIN	8-1489929-1
BLACK	BLACK	0.00076 MIN	7-1489929-7
BLACK	BLACK	0.00076 MIN	6-1489929-7
BLACK	AMBER	0.00076 MIN	7-1489929-4
BLACK	AMBER	0.00076 MIN	6-1489929-4
BLACK	NATURAL	0.00076 MIN	7-1489929-1
BLACK	NATURAL	0.00076 MIN	6-1489929-1
HOUSING COLOR	EXTRACTOR COLOR	CONTACT GOLD INTERFACE	PART NUMBER

DATE: 13JUN2003	DESIGNED BY: J. MCCLELLAN	DATE: 27JUL2003	DATE: 13JUN2003
REV: 01	REV: 01	REV: 01	REV: 01
REV: 02	REV: 02	REV: 02	REV: 02
REV: 03	REV: 03	REV: 03	REV: 03
REV: 04	REV: 04	REV: 04	REV: 04
REV: 05	REV: 05	REV: 05	REV: 05
REV: 06	REV: 06	REV: 06	REV: 06
REV: 07	REV: 07	REV: 07	REV: 07
REV: 08	REV: 08	REV: 08	REV: 08
REV: 09	REV: 09	REV: 09	REV: 09
REV: 10	REV: 10	REV: 10	REV: 10
REV: 11	REV: 11	REV: 11	REV: 11
REV: 12	REV: 12	REV: 12	REV: 12
REV: 13	REV: 13	REV: 13	REV: 13
REV: 14	REV: 14	REV: 14	REV: 14
REV: 15	REV: 15	REV: 15	REV: 15
REV: 16	REV: 16	REV: 16	REV: 16
REV: 17	REV: 17	REV: 17	REV: 17
REV: 18	REV: 18	REV: 18	REV: 18
REV: 19	REV: 19	REV: 19	REV: 19
REV: 20	REV: 20	REV: 20	REV: 20

REV	ES	DATE	DESCRIPTION	BY	CHK	APP
00			SEE SHEET 1			



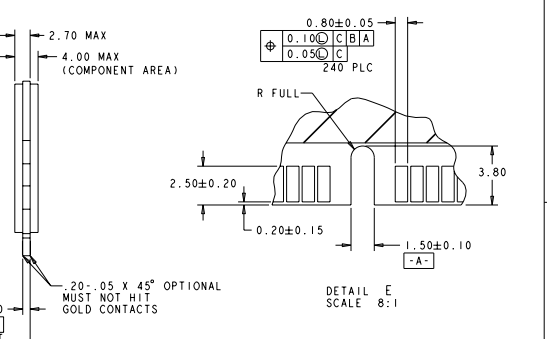
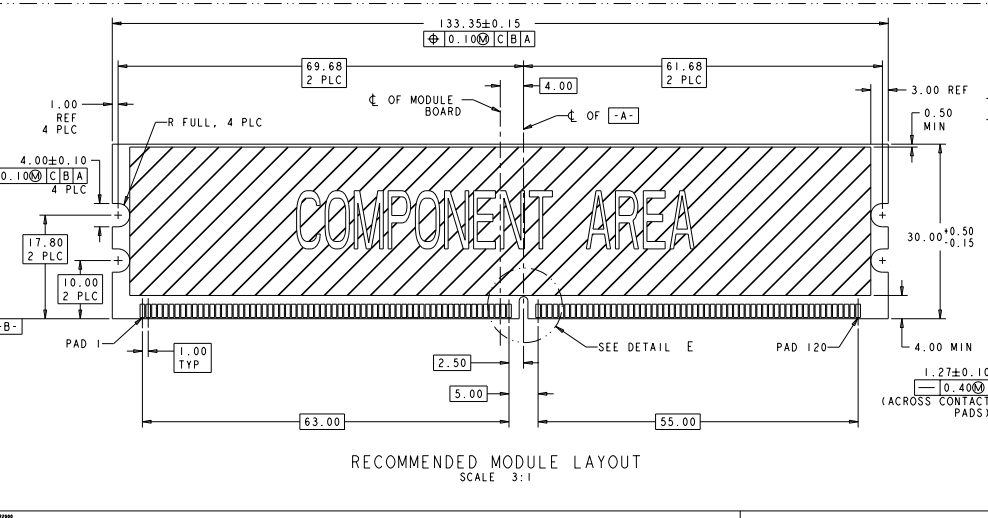
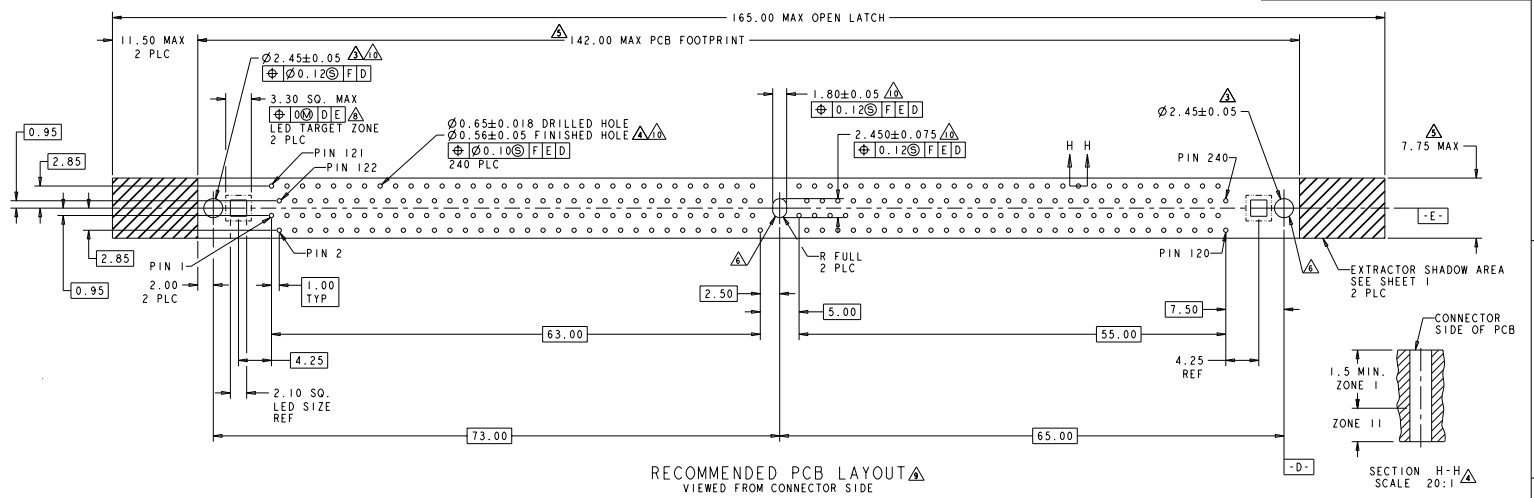
PARTIAL BOTTOM VIEW
 SCALE 12:1



SECTION G-G
 SCALE 12:1

DATE: 13 JUN 2002		DRAWN BY: J. McClellan		DATE: 07 JUL 2003		CHECKED BY: J. McClellan		DATE: 07 JUL 2003	
DESIGNED BY: J. McClellan		DATE: 07 JUL 2003		CHECKED BY: J. McClellan		DATE: 07 JUL 2003		DRAWN BY: J. McClellan	
PART NO: 100-2123		REV: 00		PROJ: 116-1309E		SHEET: 1		TOTAL SHEETS: 3	
MATERIAL: 116-1309E		REV: 00		SHEET: 1		TOTAL SHEETS: 3		CUSTOMER DRAWING: 1489929	
DATE: 13 JUN 2002		DRAWN BY: J. McClellan		DATE: 07 JUL 2003		CHECKED BY: J. McClellan		DATE: 07 JUL 2003	

REV	DATE	DESCRIPTION	BY	CHK
ES	00	SEE SHEET 1		



DATE: 07/20/2007	BY: J. McClellan	CHK: J. McClellan	DATE: 07/20/2007
PROJECT: 100-2123	DESCRIPTION: SOCKET ASSEMBLY, DOR11, PRESS FIT, 240 POSITION	STATE: PA	CUSTOMER: CUSTOMER DRAWING
REV: 1	DATE: 07/20/2007	BY: J. McClellan	CHK: J. McClellan
REV: 2	DATE: 07/20/2007	BY: J. McClellan	CHK: J. McClellan
REV: 3	DATE: 07/20/2007	BY: J. McClellan	CHK: J. McClellan
REV: 4	DATE: 07/20/2007	BY: J. McClellan	CHK: J. McClellan
REV: 5	DATE: 07/20/2007	BY: J. McClellan	CHK: J. McClellan
REV: 6	DATE: 07/20/2007	BY: J. McClellan	CHK: J. McClellan
REV: 7	DATE: 07/20/2007	BY: J. McClellan	CHK: J. McClellan
REV: 8	DATE: 07/20/2007	BY: J. McClellan	CHK: J. McClellan
REV: 9	DATE: 07/20/2007	BY: J. McClellan	CHK: J. McClellan
REV: 10	DATE: 07/20/2007	BY: J. McClellan	CHK: J. McClellan