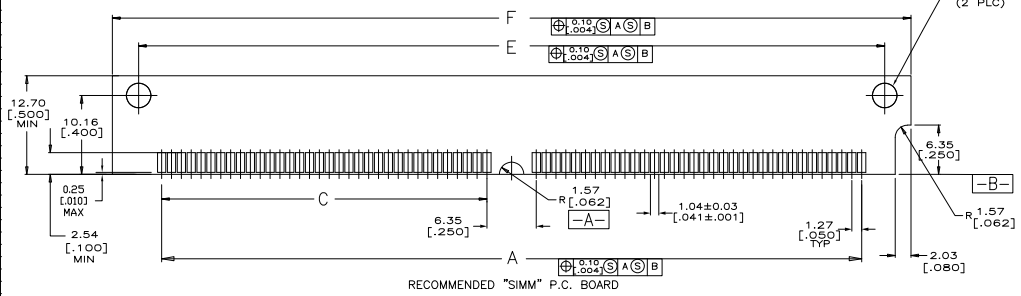
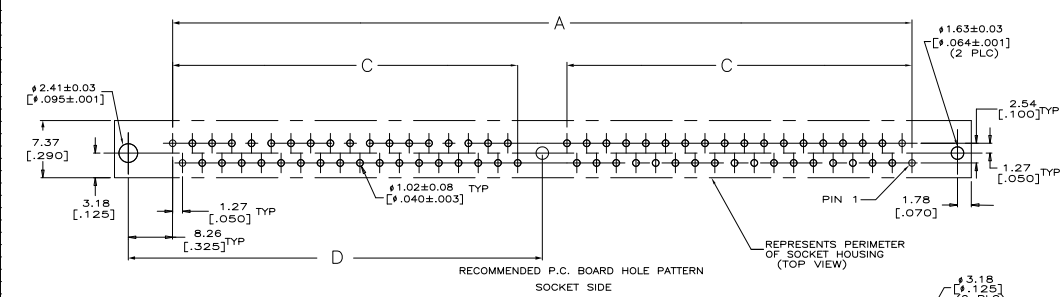
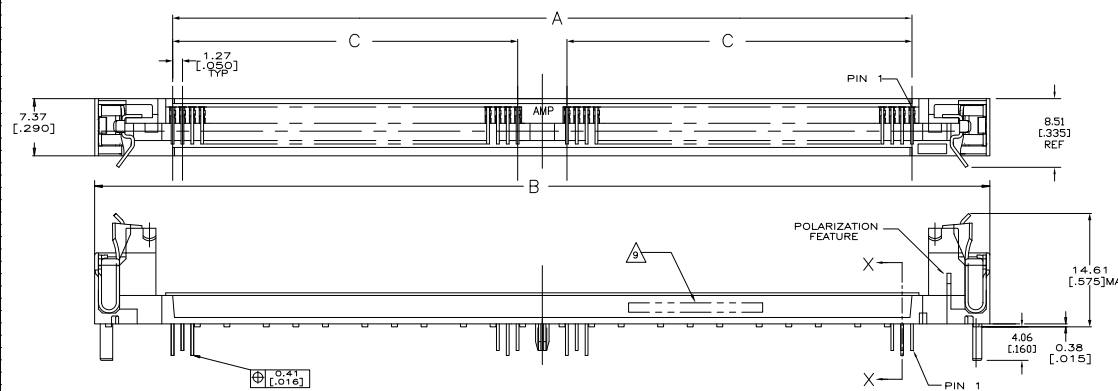
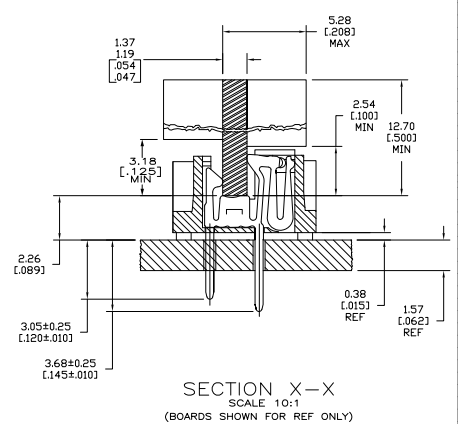


THIS DRAWING IS UNPUBLISHED  
 RECEIVED FOR INFORMATION  
 © 1988 BY TDS ELECTRONICS CORPORATION. ALL RIGHTS RESERVED.

REV	DATE	DESCRIPTION	BY	CHK	APP
00					
B		REVISED PER ECO-04-00242			



- △ HOUSING-MATERIAL : LIQUID-CRYSTAL-POLYMER.
- △ CONTACT-MATERIAL : PHOS. BRONZE.
- △ LATCH-MATERIAL : BRASS, NICKEL PLATE.
- △ CONTACT-PLATE 0.00127 [0.000050] MIN NICKEL ALL OVER.
- △ CONTACT-PLATE 0.00076 [0.000030] MIN. GOLD AT CONTACT PTS.
- △ CONTACT SOLDERTAILS-PLATE 0.00508 [0.000200] MIN MATTE TIN.
- 7. IN ADDITION TO THOSE RECOMMENDED "SIMM" P.C. BOARD DIMENSIONS AND TOLERANCES SHOWN, ALL JEDEC SPECIFICATIONS APPLY AS SHOWN ON MO-116, ISSUE A.
- 8. RECOMMENDED MATING S.I.M.M. TAB METALLURGY: BASE METAL-COPPER, PLATING TO BE 0.00076 [0.000030] MIN GOLD OVER 0.00127 [0.000050] MIN NICKEL.
- △ DATE CODE: (YEAR WEEK) XXXX FORMAT, LOCATED APPROXIMATELY AS SHOWN ON OPPOSITE SIDE.



107.95 [4.250]	101.19 [3.984]	55.88 [2.200]	44.45 [1.750]	115.57 [4.550]	95.25 [3.750]	72	5822032-4
F	E	D	C	B	A	NO. OF PINS	PART NO.
THIS DRAWING IS A CONTROLLED DOCUMENT.							
DESIGNER: [Signature]				DATE: [Date]			
CHECKED: [Signature]				DATE: [Date]			
APPROVED: [Signature]				DATE: [Date]			
CUSTOMER DRAWING				DRAWING NO. A100779			