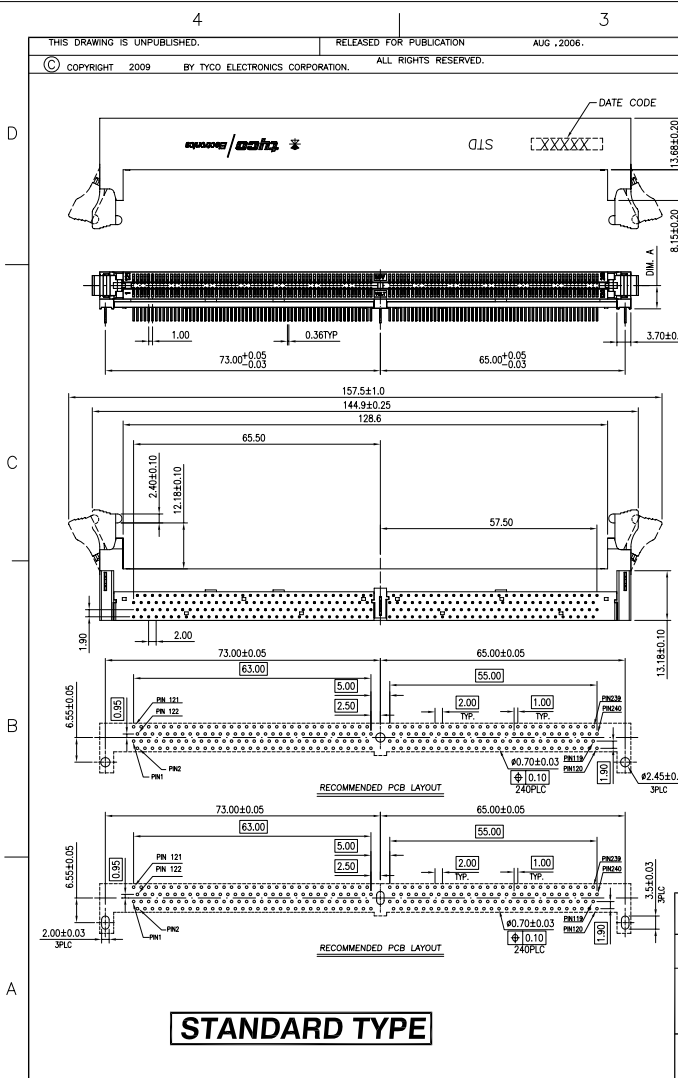


THIS DRAWING IS UNPUBLISHED. RELEASED FOR PUBLICATION AUG. 2006.
 © COPYRIGHT 2009 BY TYCO ELECTRONICS CORPORATION. ALL RIGHTS RESERVED.

| LOC | DIST | REVISIONS | | | |
|-----|------|-------------------------|---------|-----|------|
| P | LTR | DESCRIPTION | DATE | DWN | APVD |
| A1 | | REVISED (ECR-10-016817) | 12AUG10 | SC | WK |

- NOTES:
- MATERIAL:
 - HOUSING: THERMOPLASTIC, (PA46), UL94V-0; COLOR:BLACK.
 - EXTRACTOR: THERMOPLASTIC, (PA46), UL94V-0; COLOR:WHITE.
 - CONTACTS: PHOSPHOR BRONZE
 - BOARDLOCK: BRASS
 - FINISH:
 - CONTACT:
 - GOLD PLATING(SEE TABLE) ON CONTACT AREA, 3.75μm[100μ"] MIN. MATTE TIN PLATING ON SOLDER TAILS, 1.25μm[50μ"] MIN. NICKEL UNDERPLATING OVERALL.
 - BOARDLOCK:
 - 2.5μm[100μ"] MIN. MATTE TIN PLATING ON SOLDER TAIL AREA. 1.25μm[50μ"] MIN. NICKEL UNDERPLATING OVERALL.
 - RECOMMENDED PCB THICKNESS : 1.2~1.8mm
 - WAVE SOLDER CAPABLE TO 265°C
 - NET WEIGHT : DIM. B=9.8mm: 9.13gram
DIM. B=12.3mm: 9.65gram.

| DIM. B | DIM. A | MIN. GOLD PLATING | PART NUMBER | | |
|--------|--------|-------------------|-------------|---------|----|
| | | | DIM. L | REV | |
| 12.30 | 8.70 | 0.75μm [30μ"] | 3.60 | 2- | -8 |
| | | | 3.18 | 2- | -7 |
| | | 0.375μm [15μ"] | 2.54 | 2- | -6 |
| | | | 2.00 | 2- | -5 |
| | | 0.05μm [2μ"] | 3.60 | 1- | -8 |
| | | | 3.18 | 1- | -7 |
| 9.80 | 6.20 | 0.75μm [30μ"] | 3.60 | 2- | -4 |
| | | | 3.18 | 2- | -3 |
| | | 0.375μm [15μ"] | 2.54 | 2- | -2 |
| | | | 2.00 | 2- | -1 |
| | | 0.05μm [2μ"] | 3.60 | 1- | -4 |
| | | | 3.18 | 1- | -3 |
| 2.00 | 1- | -2 | | | |
| | | | 2.00 | 1775841 | -1 |

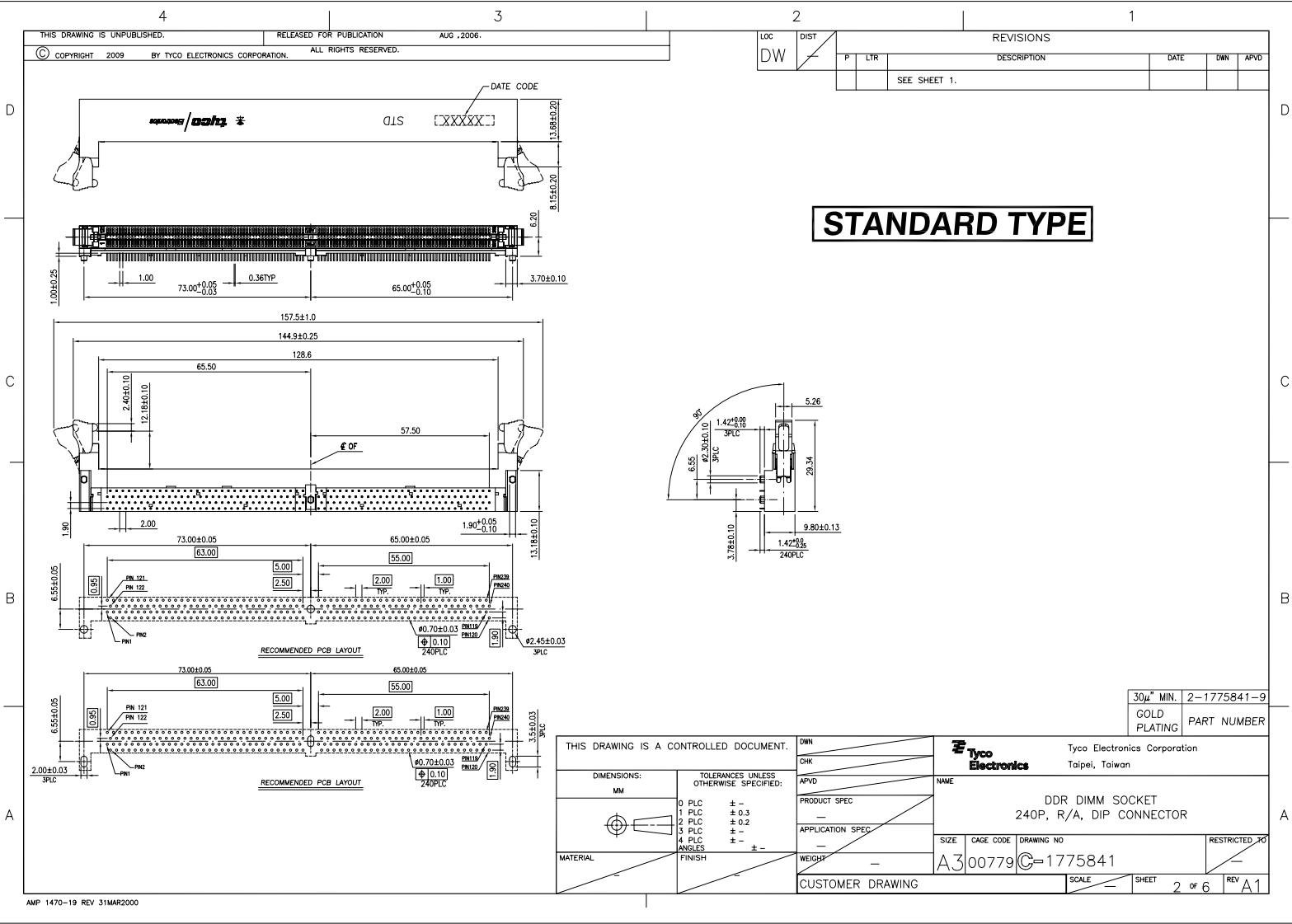


| | | | | |
|--|--|------------------|-----------|--|
| THIS DRAWING IS A CONTROLLED DOCUMENT. | | DWN S: HOU | 17MAR2006 | Tyco Electronics Corporation Taipei, Taiwan |
| | | CHK W.J. KE | 17MAR2006 | |
| | | APVD W.J. KE | 17MAR2006 | NAME |
| | | PRODUCT SPEC | | DDR DIMM SOCKET |
| | | APPLICATION SPEC | | 240P, R/A, DIP CONNECTOR |
| | | 501-57815 | | SIZE |
| | | SEE NOTE | | CAGE CODE |
| | | A3 | | DRAWING NO |
| | | 1775841 | | RESTRICTED TO |
| | | CUSTOMER DRAWING | | SCALE |
| | | SHEET 1 of 6 | | REV A1 |

AMP 1470-19 REV 31MAR2000

THIS DRAWING IS UNPUBLISHED. RELEASED FOR PUBLICATION AUG. 2006.
 © COPYRIGHT 2009 BY TYCO ELECTRONICS CORPORATION. ALL RIGHTS RESERVED.

| LOC | DIST | REVISIONS | | | |
|-----|------|--------------|------|-----|------|
| P | LTR | DESCRIPTION | DATE | DWN | APVD |
| | | SEE SHEET 1. | | | |



STANDARD TYPE

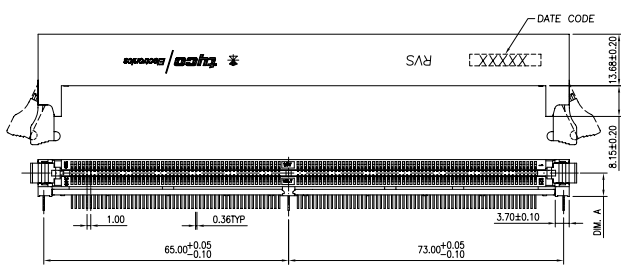
30μ" MIN. 2-1775841-9
 GOLD PLATING PART NUMBER

| | | | | | | | |
|---|--|--|--|---|--|--|--|
| THIS DRAWING IS A CONTROLLED DOCUMENT. | | DWN | | Tyco Electronics | | Tyco Electronics Corporation Taipei, Taiwan | |
| DIMENSIONS: MM | | TOLERANCES UNLESS OTHERWISE SPECIFIED: | | NAME | | DDR DIMM SOCKET 240P, R/A, DIP CONNECTOR | |
| <ul style="list-style-type: none"> 0 PLC ± - 1 PLC ± 0.3 2 PLC ± 0.2 3 PLC ± - 4 PLC ± - ANGLES ± - | | <ul style="list-style-type: none"> APVD PRODUCT SPEC APPLICATION SPEC WEIGHT | | SIZE CAGE CODE DRAWING NO A3 00779 C=1775841 | | RESTRICTED TO | |
| MATERIAL | | FINISH | | CUSTOMER DRAWING | | SCALE SHEET 2 OF 6 REV A1 | |

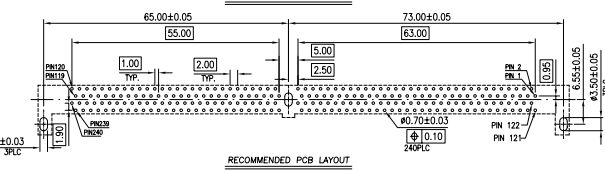
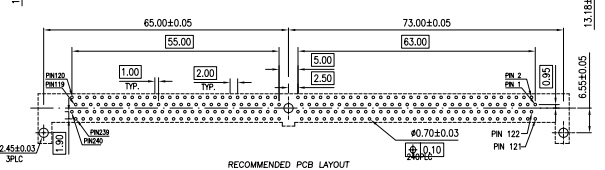
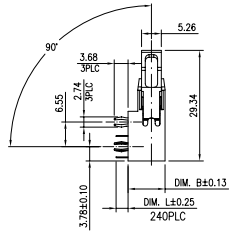
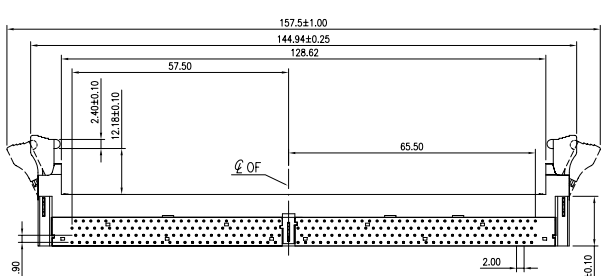
AMP 1470-19 REV 31MAR2000

THIS DRAWING IS UNPUBLISHED. RELEASED FOR PUBLICATION AUG. 2006.
 © COPYRIGHT 2009 BY TYCO ELECTRONICS CORPORATION. ALL RIGHTS RESERVED.

| LOC | | DIST | | REVISIONS | | | |
|-----|-----|-------------|------|--------------|------|--|--|
| P | LTR | DESCRIPTION | DATE | DWN | APVD | | |
| DW | | | | SEE SHEET 1. | | | |



REVERSE TYPE



| DIM. B | DIM. A | MIN. GOLD PLATING | DIM. L | PART NUMBER |
|--------|--------|-------------------|--------|-------------|
| 12.30 | 8.70 | 0.75μm [30μ"] | 3.60 | 5- -8 |
| | | | 3.18 | 5- -7 |
| | | 0.375μm [15μ"] | 2.54 | 5- -6 |
| | | | 2.00 | 5- -5 |
| | | 0.05μm [2μ"] | 3.60 | 4- -8 |
| | | | 3.18 | 4- -7 |
| | | | 2.54 | 4- -6 |
| | | | 2.00 | 4- -5 |
| 9.80 | 6.20 | 0.75μm [30μ"] | 3.60 | 5- -4 |
| | | | 3.18 | 5- -3 |
| | | 0.375μm [15μ"] | 2.54 | 5- -2 |
| | | | 2.00 | 5- -1 |
| | | 0.05μm [2μ"] | 3.60 | 4- -4 |
| | | | 3.18 | 4- -3 |
| | | | 2.54 | 4- -2 |
| | | | 2.00 | 4- -1 |

THIS DRAWING IS A CONTROLLED DOCUMENT.

Tyco Electronics Tyco Electronics Corporation
Taipei, Taiwan

NAME: **DDR DIMM SOCKET**
240P, R/A, DIP CONNECTOR

SIZE: A3 CAGE CODE: 00779 DRAWING NO: C=1775841

RESTRICTED TO: []

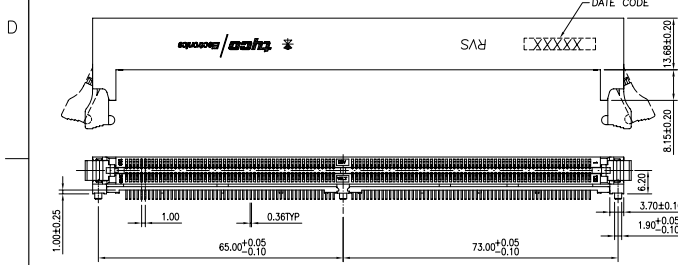
CUSTOMER DRAWING SCALE: [] SHEET: 3 of 6 REV: A1

| DIMENSIONS: | TOLERANCES UNLESS OTHERWISE SPECIFIED: |
|-------------|--|
| MM | 0 PLC ± - |
| | 1 PLC ± 0.3 |
| | 2 PLC ± 0.2 |
| | 3 PLC ± - |
| | 4 PLC ± - |
| | ANGLES ± 3° |

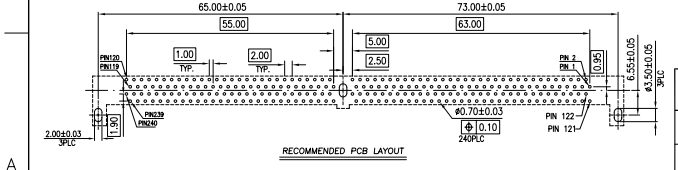
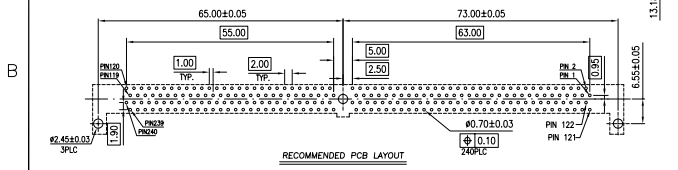
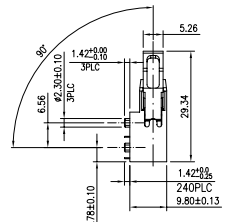
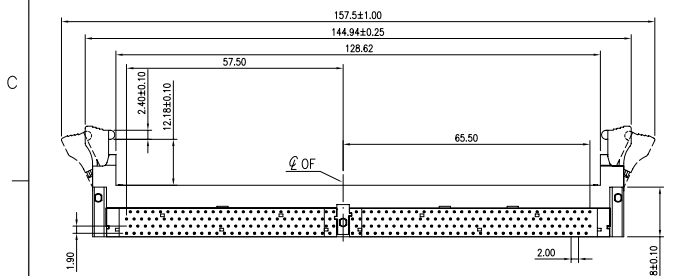
MATERIAL: [] FINISH: []

THIS DRAWING IS UNPUBLISHED. RELEASED FOR PUBLICATION AUG. 2006.
 © COPYRIGHT 2009 BY TYCO ELECTRONICS CORPORATION. ALL RIGHTS RESERVED.

| LOC | | DIST | | REVISIONS | | | |
|-----|-----|-------------|------|--------------|------|--|--|
| P | LTR | DESCRIPTION | DATE | DWN | APVD | | |
| DW | | | | SEE SHEET 1. | | | |



REVERSE TYPE

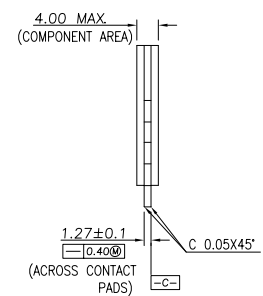
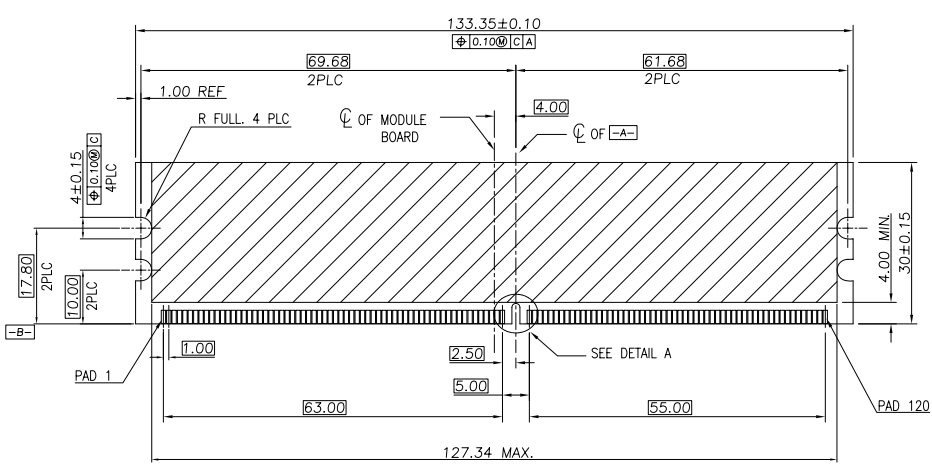


30μ" MIN. 5-1775841-9
 GOLD PLATING PART NUMBER

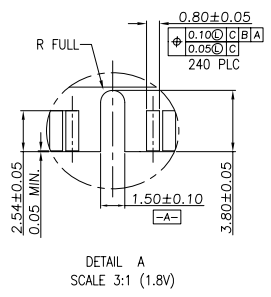
| | | | | | | | |
|--|--|--|--|--|--|---|--|
| THIS DRAWING IS A CONTROLLED DOCUMENT. | | DWN | | Tyco Electronics | | Tyco Electronics Corporation Taipei, Taiwan | |
| DIMENSIONS: MM | | TOLERANCES UNLESS OTHERWISE SPECIFIED: | | NAME | | DDR DIMM SOCKET 240P, R/A, DIP CONNECTOR | |
| | | 0 PLC ± - 1 PLC ± 0.3 2 PLC ± 0.2 3 PLC ± - 4 PLC ± - ANGLES ± 3° | | APVD PRODUCT SPEC APPLICATION SPEC | | SIZE: A3 CAGE CODE: 00779 DRAWING NO: C=1775841 | |
| MATERIAL | | FINISH | | WEIGHT | | RESTRICTED TO | |
| CUSTOMER DRAWING | | | | SCALE | | SHEET 4 of 6 REV A1 | |

THIS DRAWING IS UNPUBLISHED. RELEASED FOR PUBLICATION AUG. 2006.
 © COPYRIGHT 2009 BY TYCO ELECTRONICS CORPORATION. ALL RIGHTS RESERVED.

| LOC | DIST | REVISIONS | | | |
|-----|------|--------------|------|-----|------|
| P | LTR | DESCRIPTION | DATE | DWN | APVD |
| | | SEE SHEET 1. | | | |



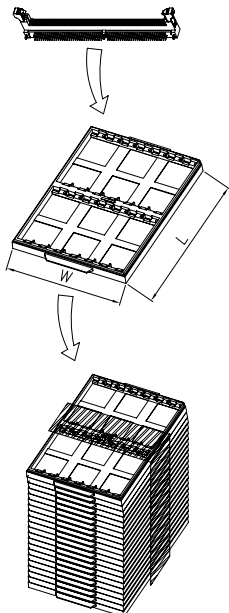
PLUG COMPONENT:DDR II 240P FUNCTION CARD



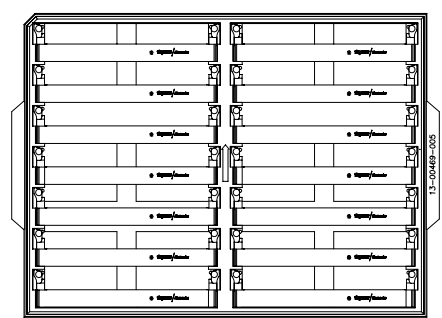
| | | | | |
|--|--|------------------|--|-----------|
| THIS DRAWING IS A CONTROLLED DOCUMENT. | | DWN | Tyco Electronics Corporation Taipei, Taiwan | |
| DIMENSIONS: MM | | CHK | NAME | |
| TOLERANCES UNLESS OTHERWISE SPECIFIED: | | APVD | PRODUCT SPEC | |
| 0 PLC ± - | | APPLICATION SPEC | DDR DIMM SOCKET 240P, R/A, DIP CONNECTOR | |
| 1 PLC ± 0.3 | | WEIGHT | SIZE | CAGE CODE |
| 2 PLC ± 0.2 | | | A3 | 00779 |
| 3 PLC ± - | | | DRAWING NO | 1775841 |
| 4 PLC ± - | | | RESTRICTED TO | |
| ANGLES ± 3° | | CUSTOMER DRAWING | SCALE | SHEET |
| MATERIAL FINISH | | | | 5 of 6 |
| | | | | REV A1 |

THIS DRAWING IS UNPUBLISHED. RELEASED FOR PUBLICATION AUG. 2006.
 © COPYRIGHT 2009 BY TYCO ELECTRONICS CORPORATION. ALL RIGHTS RESERVED.

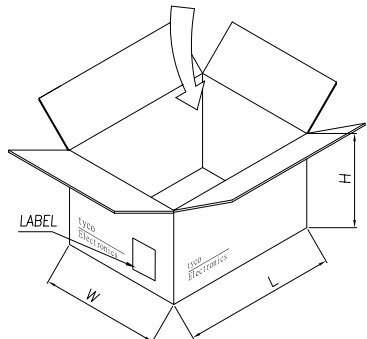
| LOC | | DIST | | REVISIONS | | | |
|-----|-----|-------------|------|--------------|------|--|--|
| P | LTR | DESCRIPTION | DATE | DWN | APVD | | |
| DW | | | | SEE SHEET 1. | | | |



- NOTES :
- MATERIAL :
 - 1.1 TRAY : PS(BLACK)
 - 1.2 SHIPPING CARTON : CORRUGATED FIBERBOARD
 - DIMENSION :
 - 2.1 TRAY : L=335, W=239, H=22
 - 2.1 SHIPPING CARTON : L=365, W=255, H=365
 - QUANTITY :
 - 3.1 PRIMARY PACKING: 14 PCS/TRAY
 - 3.2 SECONDARY PACKING: 21TRAY/CARTON
(THE TOP TRAY IS EMPTY)280PCS/CARTON.
 - WEIGHT :
 - 4.1 NET WEIGHT : 2.56Kg
 - 4.2 GROSS WEIGHT : 5.84Kg



TRAY LAYOUT



| | | | | | | | | | | | | | | | | | | |
|---|---|--|--|---------------------|---|-------|---|-------|---|-------|---|-------|---|--------|---|------|---|--|
| THIS DRAWING IS A CONTROLLED DOCUMENT. | | DWN | Tyco Electronics Corporation Taipei, Taiwan | | | | | | | | | | | | | | | |
| DIMENSIONS: MM | | CHK | NAME | | | | | | | | | | | | | | | |
| <table border="1"> <tr> <td>TOLERANCES UNLESS OTHERWISE SPECIFIED:</td> <td></td> </tr> <tr> <td>0 PLC</td> <td>±</td> </tr> <tr> <td>1 PLC</td> <td>±</td> </tr> <tr> <td>2 PLC</td> <td>±</td> </tr> <tr> <td>3 PLC</td> <td>±</td> </tr> <tr> <td>4 PLC</td> <td>±</td> </tr> <tr> <td>ANGLES</td> <td>±</td> </tr> </table> | | TOLERANCES UNLESS OTHERWISE SPECIFIED: | | 0 PLC | ± | 1 PLC | ± | 2 PLC | ± | 3 PLC | ± | 4 PLC | ± | ANGLES | ± | APVD | DDR DIMM SOCKET 240P, R/A, DIP CONNECTOR | |
| TOLERANCES UNLESS OTHERWISE SPECIFIED: | | | | | | | | | | | | | | | | | | |
| 0 PLC | ± | | | | | | | | | | | | | | | | | |
| 1 PLC | ± | | | | | | | | | | | | | | | | | |
| 2 PLC | ± | | | | | | | | | | | | | | | | | |
| 3 PLC | ± | | | | | | | | | | | | | | | | | |
| 4 PLC | ± | | | | | | | | | | | | | | | | | |
| ANGLES | ± | | | | | | | | | | | | | | | | | |
| MATERIAL | | PRODUCT SPEC | SIZE | RESTRICTED TO | | | | | | | | | | | | | | |
| FINISH | | APPLICATION SPEC | CAGE CODE | DRAWING NO | | | | | | | | | | | | | | |
| | | WEIGHT | A3 00779 | ©=1775841 | | | | | | | | | | | | | | |
| | | CUSTOMER DRAWING | SCALE | SHEET 6 OF 6 REV A1 | | | | | | | | | | | | | | |