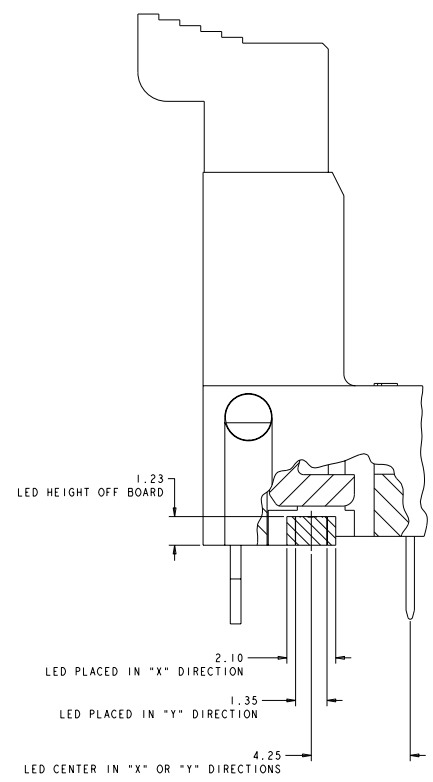
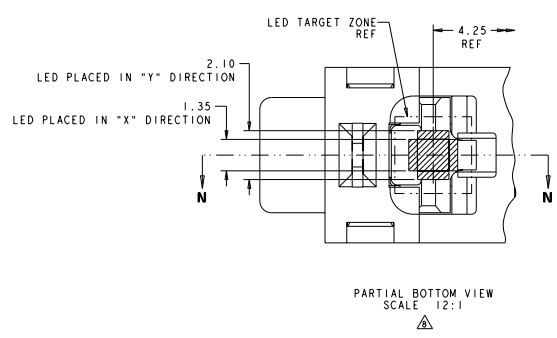


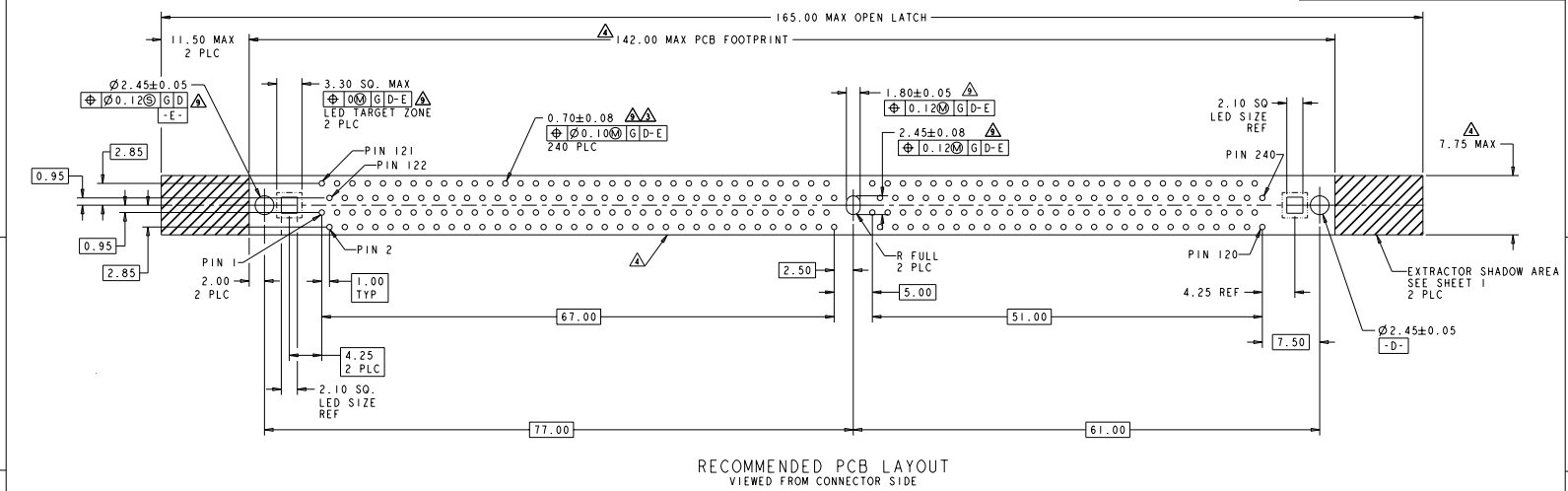
REV	DATE	DESCRIPTION	BY	CHK	APP
00		SEE SHEET 1			



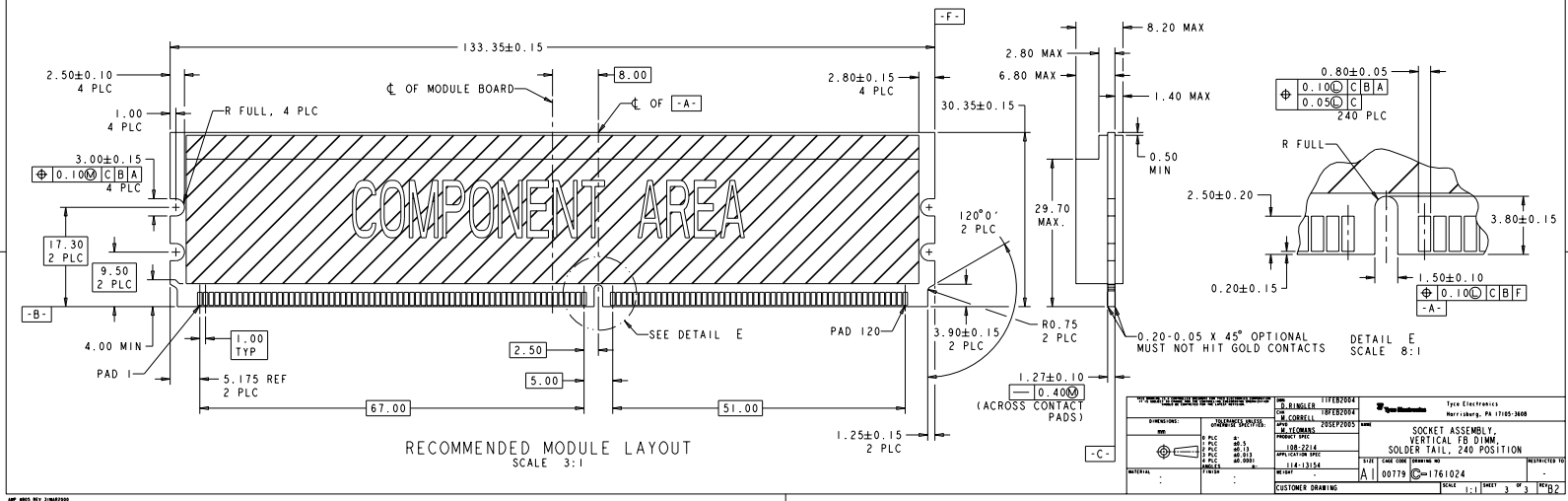
SECTION **NN**
SCALE 12:1

DATE: 08/22/04 DRAWN BY: J. COBELL CHECKED BY: J. COBELL APPROVED BY: J. COBELL TITLE: CUSTOMER DRAWING		DATE: 08/22/04 DRAWN BY: J. COBELL CHECKED BY: J. COBELL APPROVED BY: J. COBELL TITLE: CUSTOMER DRAWING		DATE: 08/22/04 DRAWN BY: J. COBELL CHECKED BY: J. COBELL APPROVED BY: J. COBELL TITLE: CUSTOMER DRAWING	
DATE: 08/22/04 DRAWN BY: J. COBELL CHECKED BY: J. COBELL APPROVED BY: J. COBELL TITLE: CUSTOMER DRAWING		DATE: 08/22/04 DRAWN BY: J. COBELL CHECKED BY: J. COBELL APPROVED BY: J. COBELL TITLE: CUSTOMER DRAWING		DATE: 08/22/04 DRAWN BY: J. COBELL CHECKED BY: J. COBELL APPROVED BY: J. COBELL TITLE: CUSTOMER DRAWING	

REV	DATE	DESCRIPTION	BY	CHK	APP
00		SEE SHEET 1			



RECOMMENDED PCB LAYOUT
VIEWED FROM CONNECTOR SIDE



RECOMMENDED MODULE LAYOUT
SCALE 3:1

DATE: 08/24/22 BY: PCB ELECTRONICS CORPORATION ALL RIGHTS RESERVED	DRAWN BY: J. B. BROWN CHECKED BY: J. B. BROWN APPROVED BY: J. B. BROWN	PART NUMBER: 11762004 REV: 00 MANUFACTURER: CORRELL PART NUMBER: 11762004 REV: 00 MANUFACTURER: CORRELL	DATE: 08/24/22 BY: PCB ELECTRONICS CORPORATION ALL RIGHTS RESERVED
TITLE: SOCKET ASSEMBLY, VERTICAL FB DIMM, SOLDER TAIL, 240 POSITION		DATE: 08/24/22 BY: PCB ELECTRONICS CORPORATION ALL RIGHTS RESERVED	
MATERIAL: A PART NUMBER: 11761024		DATE: 08/24/22 BY: PCB ELECTRONICS CORPORATION ALL RIGHTS RESERVED	