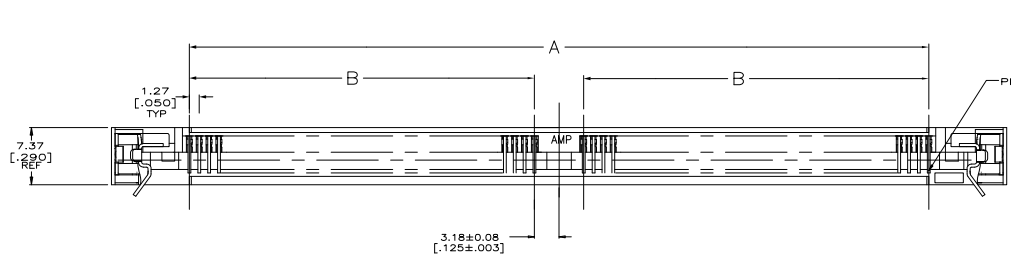
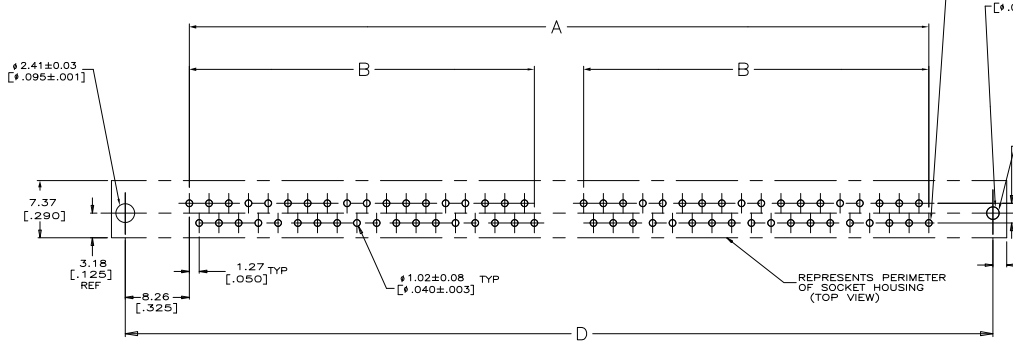
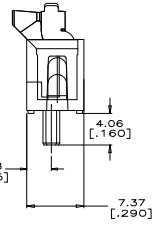
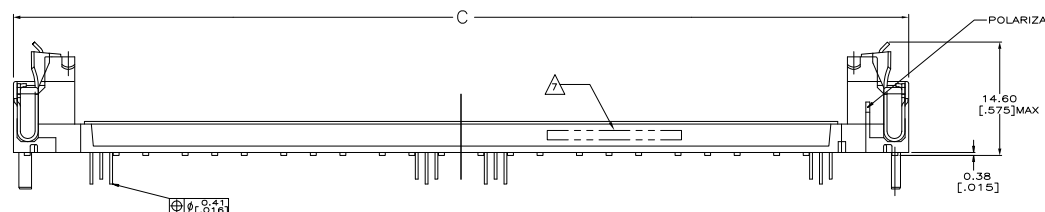


THIS DRAWING IS UNPUBLISHED
 UNLESS OTHERWISE SPECIFIED
 © 1988 BY TSS ELECTRONICS CORPORATION. ALL RIGHTS RESERVED.

REV	DATE	DESCRIPTION	BY	CHK	APP
AG 5.3					
B		REVISED PER ECO-04-00242			JDF/MDB



- △ HOUSING-MATERIAL: LIQUID-CRYSTAL-POLYMER.
- △ CONTACT-MATERIAL: PHOS. BRONZE, AMP 100-255.
- △ LATCH-MATERIAL: BRASS, AMP 100-86 NICKEL PLATE 0.00127[.000050] MIN PER AMP SPEC 112-25-1.
- △ CONTACT-PLATE: 0.00508[.000200] MIN MATTE TIN OVER 0.00127 [.000050] MIN NICKEL.
- 5. IN ADDITION TO THOSE RECOMMENDED "SIMM" P. C. BOARD DIMENSIONS AND TOLERANCES SHOWN, ALL JEDEC SPECIFICATIONS APPLY AS SHOWN ON MO-115, ISSUE A.
- 6. RECOMMENDED MATING S.I.M.M. TAB METALLURGY: BASE METAL-COPPER, PLATING TO BE 0.00762[.000300] MIN TIN/LEAD OVER 0.00127[.000050] MIN NICEL.
- △ DATE CODE: (YEAR WEEK) XXXX FORMAT, LOCATED APPROXIMATELY AS SHOWN ON OPPOSITE SIDE.



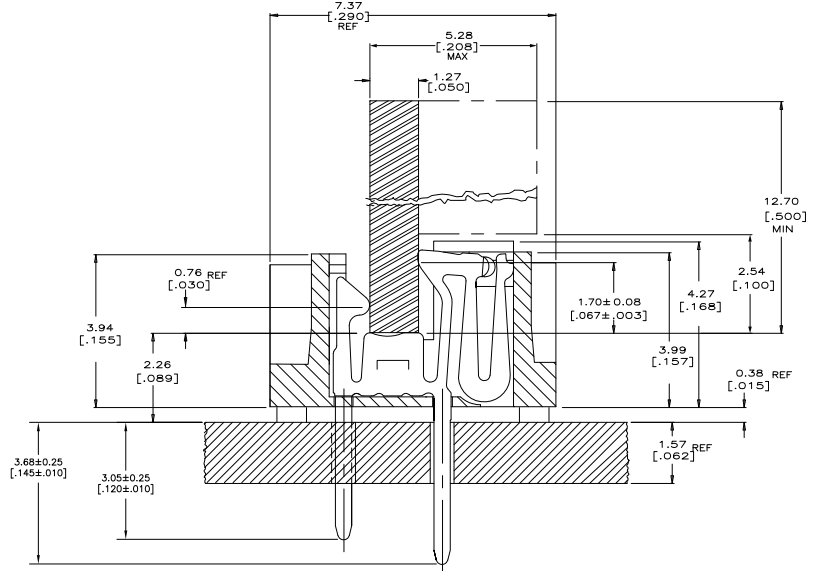
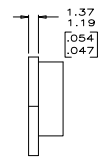
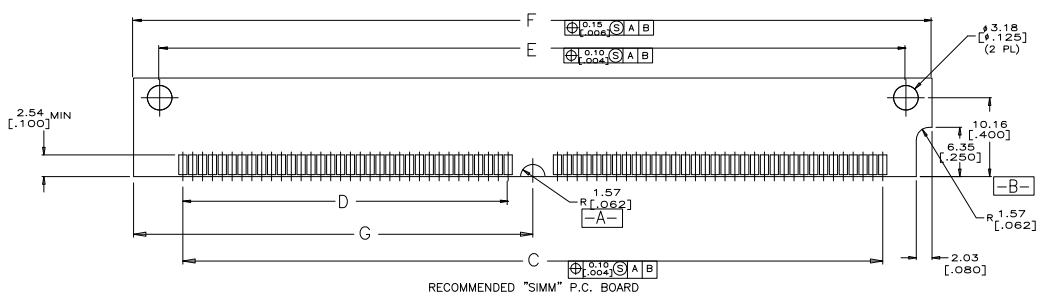
RECOMMENDED P.C. BOARD HOLE PATTERN
 SOCKET SIDE

D	C	B	A	NO. OF POS	PART NO
111.76[4.400]	115.32[4.540]	44.45[1.750]	95.25[3.750]	72	5822019-4

THIS DRAWING IS A CONTROLLED DOCUMENT.		DATE	REVISED	DATE	REVISED
DESIGNED BY	DESIGNED	DATE	REVISED	DATE	REVISED
DRAWN BY	DRAWN	DATE	REVISED	DATE	REVISED
CHECKED BY	CHECKED	DATE	REVISED	DATE	REVISED
APPROVED BY	APPROVED	DATE	REVISED	DATE	REVISED
CUSTOMER DRAWING		DATE	REVISED	DATE	REVISED

THIS DRAWING IS UNPUBLISHED
 © 1988 BY TYS ELECTRONICS CORPORATION. ALL RIGHTS RESERVED.

REV	DATE	DESCRIPTION	BY	CHK	APP
AG 53					
		SEE SHEET 1			



SECTIONED THROUGH CONNECTOR ASSEMBLY

53.98[2.125]	107.95[4.250]	101.19[3.984]	44.45[1.750]	95.25[3.750]	72
G	F	E	D	C	NO. OF POSN
RECOMMENDED "SIMM" P.C. BOARDS					
THIS DRAWING IS A CONTROLLED DOCUMENT.		BY	DATE	TYS ELECTRONICS CORPORATION Harrisburg, PA 17105-3608	
APPROVED	DESIGNED	DATE	CONNECTOR, MICRO-EDGE, .050q VERTICAL, TIN PLATE, METAL LATCH		
SEE SHEET 1	SEE SHEET 1	DATE	SIZE	DATE	NO. OF POSN
			A1	00779G=5822019	72
CUSTOMER DRAWING		REV	DATE	BY	APP
		4.1	2		