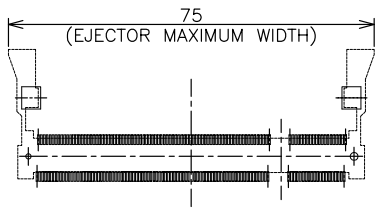


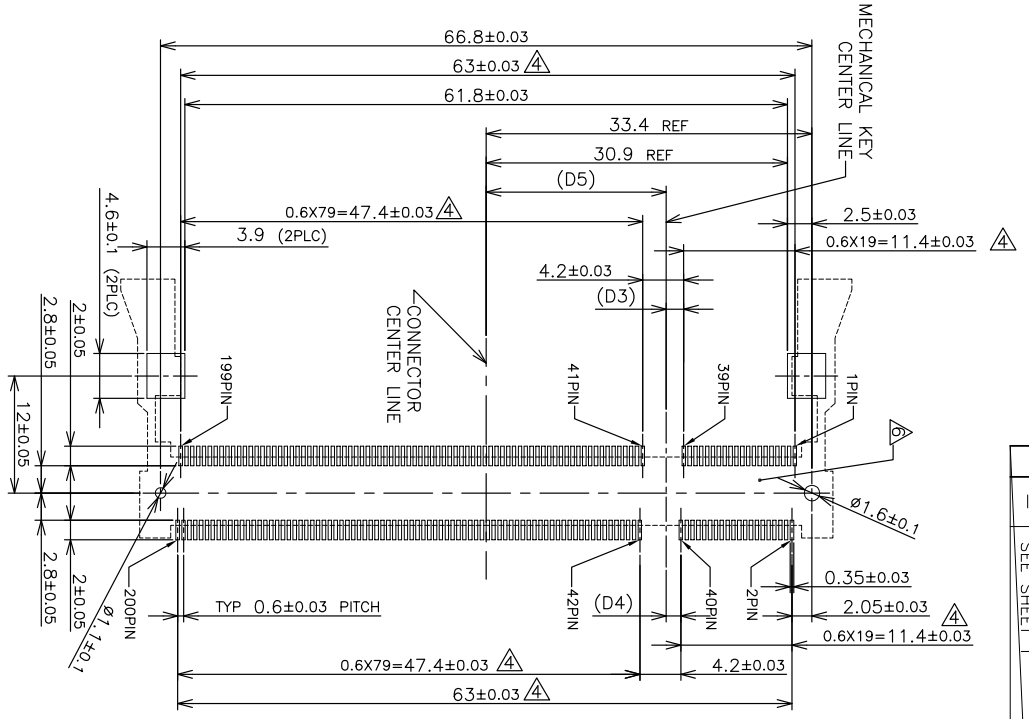
REFERENCE P.C. BOARD PATTERN LAYOUT
 (CONNECTOR MOUNTING SIDE)



REAL SIZE (SCALE 1:1)

PRELIMINARY

1.8V	17.55	2.4	2.7
2.5V	18.45	1.5	1.8
POWER SUPPLY	D5	D4	D3



LOC	DIST	REV	DATE	DMN	APVD
ES		1			

REV	DESCRIPTION	DATE	DMN	APVD
1	SEE SHEET 1			

THIS DRAWING IS A CONTROLLED DOCUMENT.

DIMENSIONS: MM	TOLERANCES UNLESS OTHERWISE SPECIFIED:
0 PLC	±
1 PLC	±
2 PLC	±
3 PLC	±
4 PLC	±
5 PLC	±
FINISH	±

APVD: _____
 PRODUCT SPEC: _____
 APPLICATION SPEC: _____
 WEIGHT: _____

RESTRICTED CUSTOMER

NAME: **Tyco Electronics**
 Tyco Electronics Corporation
 SH/CN GuiPingRD 668#

DDR1 & DDR2 SODIMM SOCKET
 0.6mm PITCH 200POS
 LOW PROFILE REVERSE TYPE

SIZE: A3
 DATE CODE: 00779
 DRAWING NO: 65665692

RESTRICTED TO: _____

SCALE: 2:1
 SHEET: 2 OF 4
 REV: D

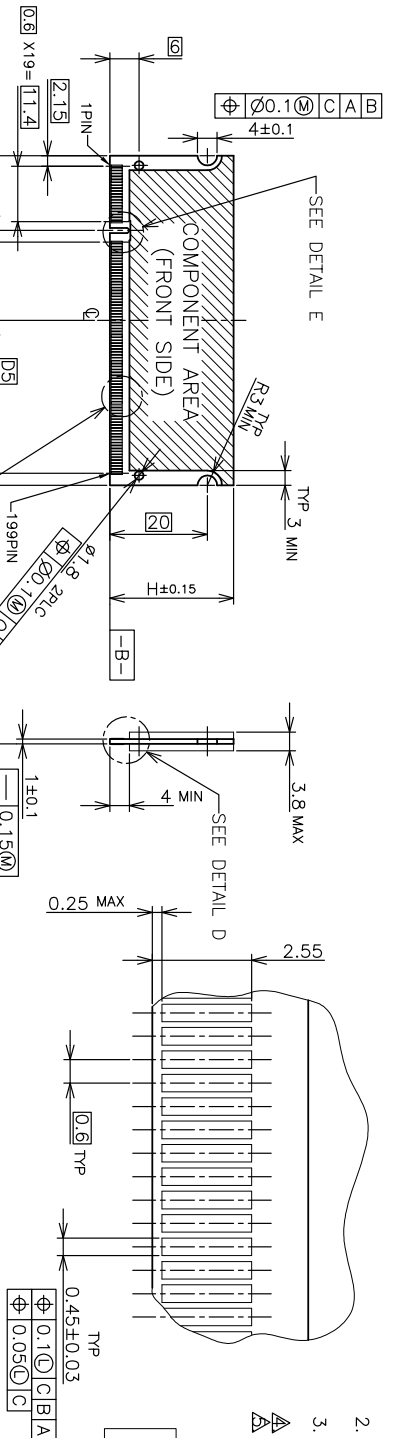
THIS DRAWING IS UNPUBLISHED.
 COPYRIGHT 2001 BY TEO ELECTRONICS CORPORATION. ALL RIGHTS RESERVED.

RELEASED FOR PUBLICATION OCT. 2001.

LOC: ES
 DIST: P LTR

REV	DESCRIPTION	DATE	DWG	APPD
1	SEE SHEET 1			

DETAIL F
 SCALE 8:1



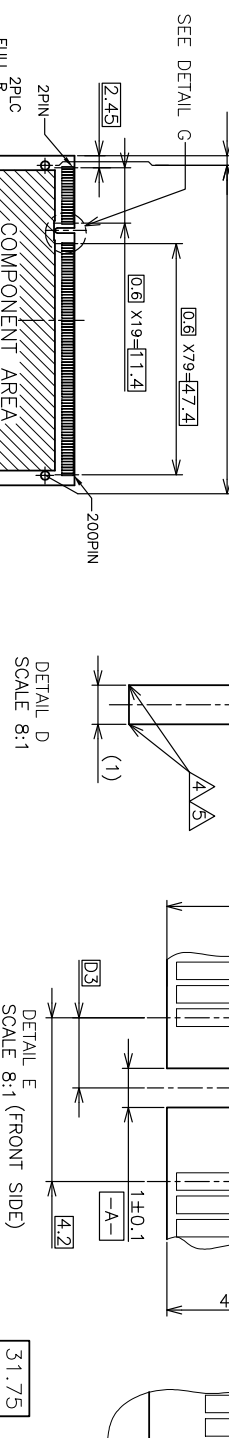
- (APPLIED TO SHEET 3)
 1. TOLERANCES ON ALL DIMENSIONS ±0.15 UNLESS OTHERWISE SPECIFIED.
 2. P.C. BOARD THICKNESS APPLIES ACROSS TABS AND INCLUDES PLATING AND/OR METALIZATION.
 3. FINISH OF PAD : GOLD PLATING 0.00076 MIN. OVER Ni PLATING 0.002MIN.
 NO BURR
 CHAMFER 0.25 MAX x 45° IF EXIST.

PRELIMINARY

LOC: ES
 DIST: P LTR

REV	DESCRIPTION	DATE	DWG	APPD
1	SEE SHEET 1			

DETAIL E
 SCALE 8:1 (FRONT SIDE)



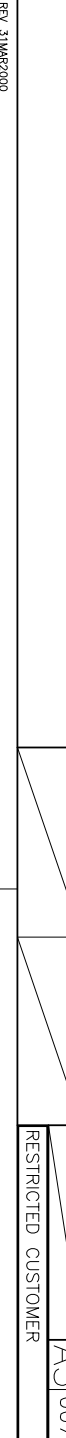
- (APPLIED TO SHEET 3)
 1. TOLERANCES ON ALL DIMENSIONS ±0.15 UNLESS OTHERWISE SPECIFIED.
 2. P.C. BOARD THICKNESS APPLIES ACROSS TABS AND INCLUDES PLATING AND/OR METALIZATION.
 3. FINISH OF PAD : GOLD PLATING 0.00076 MIN. OVER Ni PLATING 0.002MIN.
 NO BURR
 CHAMFER 0.25 MAX x 45° IF EXIST.

PRELIMINARY

LOC: ES
 DIST: P LTR

REV	DESCRIPTION	DATE	DWG	APPD
1	SEE SHEET 1			

DETAIL D
 SCALE 8:1



- (APPLIED TO SHEET 3)
 1. TOLERANCES ON ALL DIMENSIONS ±0.15 UNLESS OTHERWISE SPECIFIED.
 2. P.C. BOARD THICKNESS APPLIES ACROSS TABS AND INCLUDES PLATING AND/OR METALIZATION.
 3. FINISH OF PAD : GOLD PLATING 0.00076 MIN. OVER Ni PLATING 0.002MIN.
 NO BURR
 CHAMFER 0.25 MAX x 45° IF EXIST.

PRELIMINARY

AMP 1470-19 REV 31MAR2000

THIS DRAWING IS A CONTROLLED DOCUMENT.

DIM	CHK	APD	PRODUCT SPEC	APPLICATION SPEC	WEIGHT	RESTRICTED CUSTOMER

DIMENSIONS:	TOLERANCES UNLESS OTHERWISE SPECIFIED:
MM	
0 PL C	±
1 PL C	±
2 PL C	±
3 PL C	±
4 PL C	±
FINISH	±

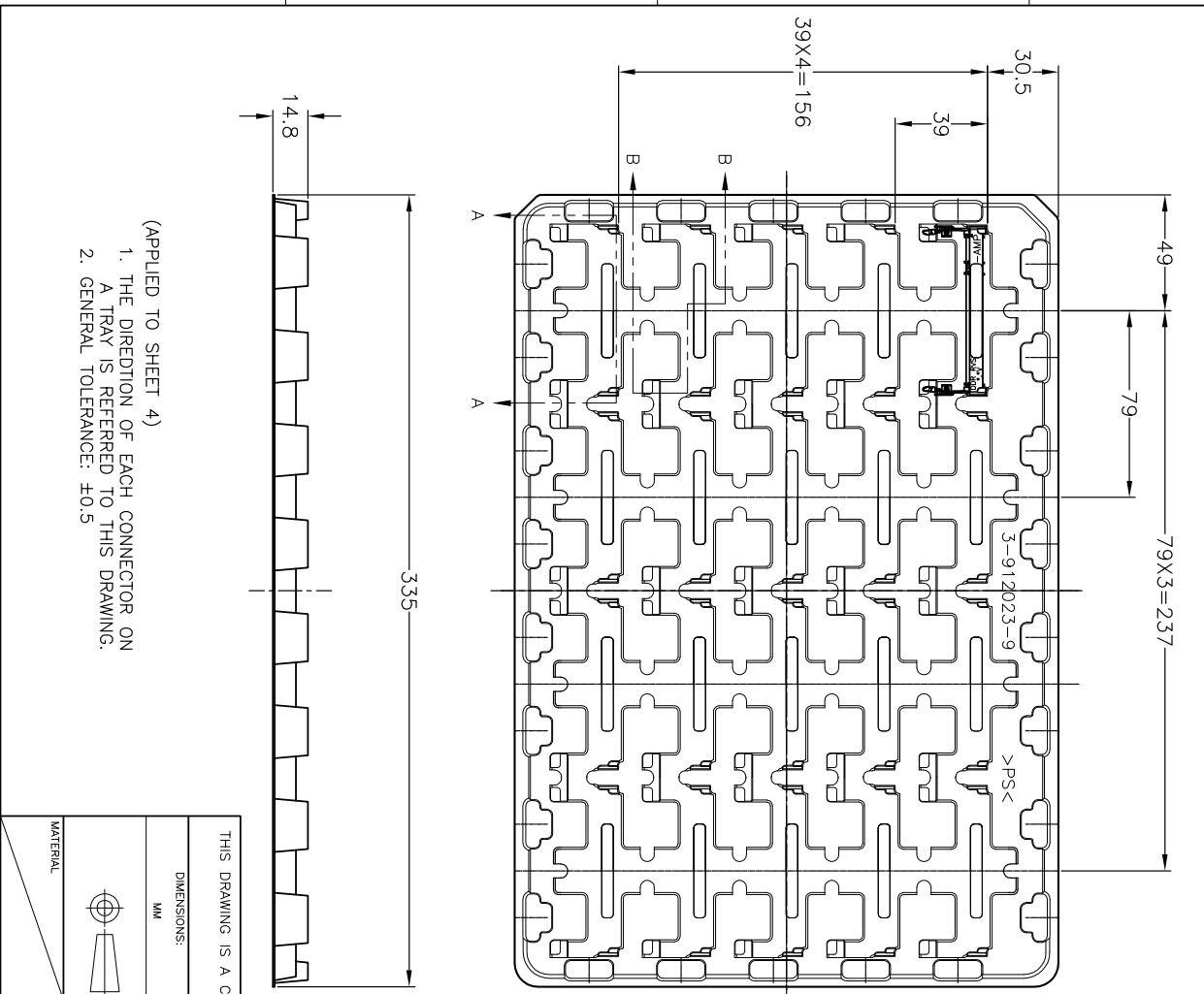
NAME	SIZE	CAGE CODE	DRAWING NO	RESTRICTED TO
DDR1 & DDR2 SODIMM SOCKET	A3	00779	6565692	
0.6mm PITCH 200POS				
LOW PROFILE REVERSE TYPE				

SCALE	SHEET	OF	REV
2:1	3	4	D

Tyco Electronics Corporation
 SH/CN Guiltingrd 668#

POWER SUPPLY	D5	D4	D3
1.8V	17.55	2.4	2.7
2.5V	18.45	1.5	1.8

REV	DESCRIPTION	DATE	DWG	APPD
1				



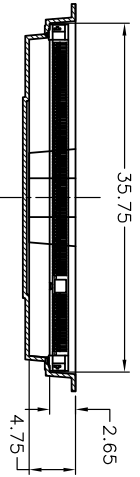
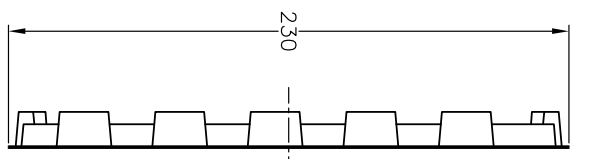
THIS DRAWING IS A CONTROLLED DOCUMENT.

DIMENSIONS: MM	TOLERANCES UNLESS OTHERWISE SPECIFIED:
0 P.L.C.	±
1 P.L.C.	±
2 P.L.C.	±
3 P.L.C.	±
4 P.L.C.	±

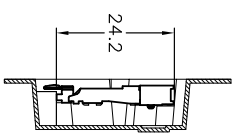
DWG	CHK	APPD	PRODUCT SPEC	APPLICATION SPEC	WEIGHT

NAME	SIZE	CAGE CODE	DRAWING NO	RESTRICTED TO
Tyco Electronics DDR1 & DDR2 SODIMM SOCKET 0.6mm PITCH 200POS LOW PROFILE REVERSE TYPE	A3	00779	6565692	

POWER SUPPLY (TYPE)	QTY	P/N
1.8V (DDR2)	1-6565692-4	20EA/TRAY
1.8V (DDR2)	6565692-4	20EA/TRAY
2.5V (DDR1)	1-6565692-1	20EA/TRAY
2.5V (DDR1)	6565692-1	20EA/TRAY



PRELIMINARY



- (APPLIED TO SHEET 4)
1. THE DIRECTION OF EACH CONNECTOR ON A TRAY IS REFERRED TO THIS DRAWING.
 2. GENERAL TOLERANCE: ±0.5