

4

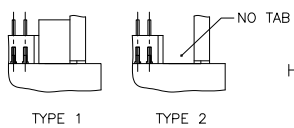
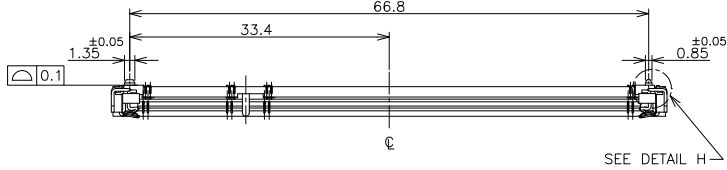
3

2

1

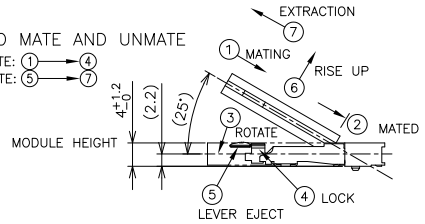
THIS DRAWING IS UNPUBLISHED. RELEASED FOR PUBLICATION OCT. 2001.  
 COPYRIGHT 2001 By - ALL RIGHTS RESERVED.

| LOC | DIST | REVISIONS                 |         |     |      |
|-----|------|---------------------------|---------|-----|------|
| P   | LTR  | DESCRIPTION               | DATE    | DWN | APVD |
| G2  |      | REVISED PER ECO-11-005033 | 28MAR11 | RK  | HMR  |

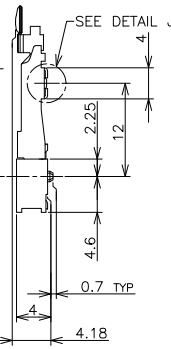
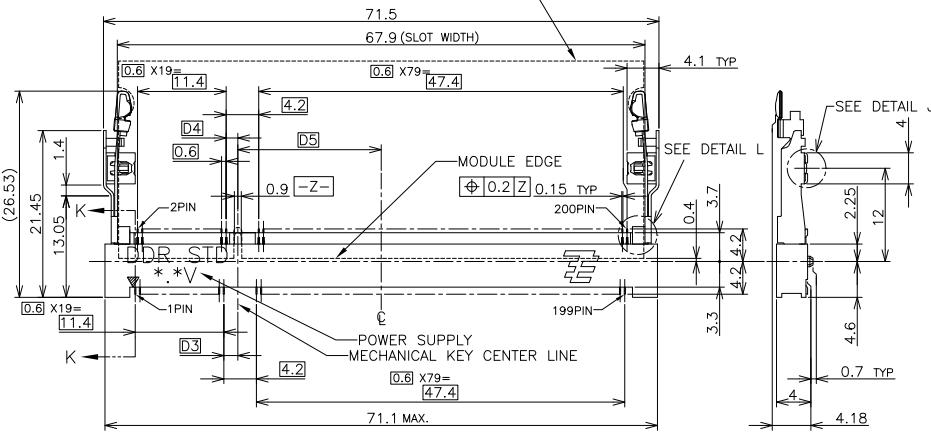


HOW TO MATE AND UNMATE

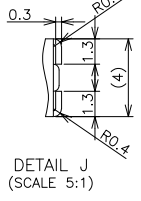
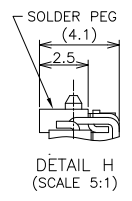
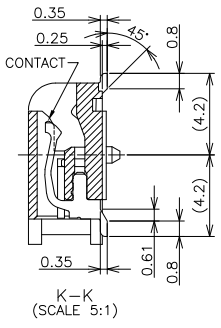
MATE: ① → ④  
 UNMATE: ⑤ → ⑦



RECOMMENDED MATING P.C.B OUTLINE



- (APPLIED TO SHEET 1-2)
- MATERIAL ; HOUSING: HIGH TEMPERATURE THERMO PLASTIC UL94V-0  
 CONTACT: COPPER ARROY  
 LOCK LEVER: STAINLESS STEEL  
 SOLDER PEG: COPPER ARROY
  - FINISH ; CONTACT AREA: GOLD FLASH ON 0.0013MIN ALL OVER NICKEL.  
 SOLDERING AREA: GOLD FLASH PLT.  
 SOLDER PEG: TIN PLATING.
- MECHANICAL KEY POSITION OF CONNECTOR SEE TABLE.  
 TOLERANCES NON-CUMULATIVE.  
 NOT TO SCALE.  
 INSIDE MUST BE RESIST COAT EXCEPT SOLDER PATTERN.  
 IF THE MODULE DOESN'T INSERT AND LOCK IN THE LATCH SMOOTHLY,  
 OPEN WIDE BOTH LATCHES BY MANUAL. AND THE MODULE MUST BE  
 INSERTED AND LOCKED IN THE LATCH.



| TYPE   | AVAILABLE      | BOSSLESS | 1.8V (DDR2)         | 17.55   | 2.4 | 2.7          | 200 | 1-1565691-4   |
|--|----------------|----------|---------------------|---|-----|--------------|-----|---------------|
| TYPE 2   | AVAILABLE      | H        | 1.8V (DDR2)         | 17.55   | 2.4 | 2.7          | 200 | 1565691-4     |
| TYPE 1   | AVAILABLE      | BOSSLESS | 2.5V (DDR1)         | 18.45   | 1.5 | 1.8          | 200 | 1-1565691-1   |
| TYPE 1   | AVAILABLE      | H        | 2.5V (DDR1)         | 18.45   | 1.5 | 1.8          | 200 | 1565691-1     |
| TAB TYPE   | TOOLING STATUS | REMARK   | POWER SUPPLY (TYPE) | D5  | D4  | D3           | POS | PART NO.      |
| THIS DRAWING IS A CONTROLLED DOCUMENT.   |                |          | DWN B.WONG 14JUL10  | TE Connectivity<br>DDR1 & DDR2 SODIMM SOCKET<br>0.6mm PITCH 200POS<br>LOW PROFILE STANDARD TYPE |     |              |     |               |
| DIMENSIONS: MM   |                |          | CHK C.WANG 14JUL10  |   |     |              |     |               |
| TOLERANCES UNLESS OTHERWISE SPECIFIED:   |                |          | APVD S.YAO 14JUL10  |   |     |              |     |               |
| 0 PLC ±0.3<br>1 PLC ±0.3<br>2 PLC ±0.3<br>3 PLC ±0.3<br>4 PLC ±0.3<br>ANGLES ±3° |                |          | NAME                |   |     |              |     |               |
| MATERIAL   |                |          | PRODUCT SPEC        | SIZE CAGE CODE DRAWING NO   |     |              |     |               |
| FINISH   |                |          | APPLICATION SPEC    | 108-5701  |     |              |     |               |
|  |                |          | WEIGHT              | 3.2g  |     |              |     |               |
|  |                |          | CUSTOMER DRAWING    | A300779   |     | C-1565691    |     | RESTRICTED TO |
|  |                |          | SCALE               | 2:1   |     | SHEET 1 of 4 |     | REV G2        |



4

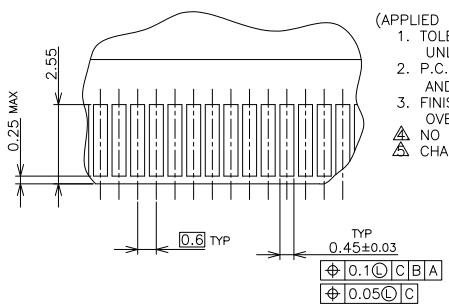
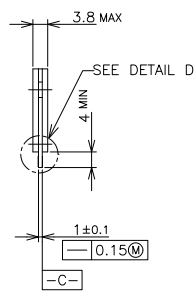
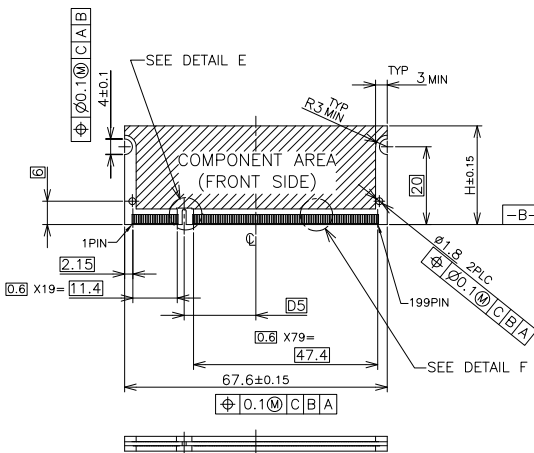
3

2

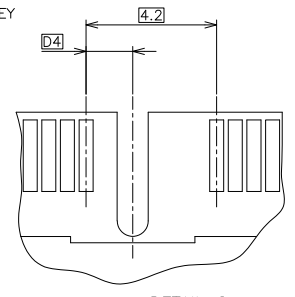
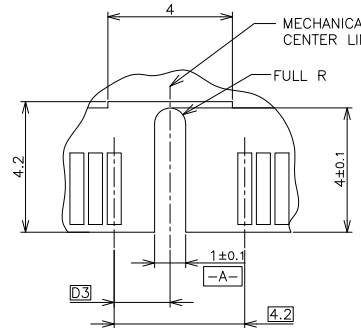
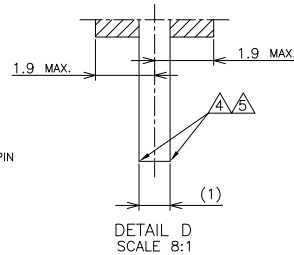
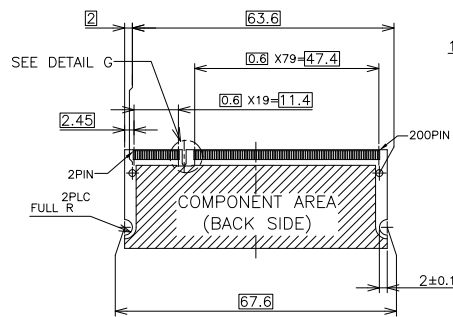
1

THIS DRAWING IS UNPUBLISHED. RELEASED FOR PUBLICATION OCT. 2001.  
 ALL RIGHTS RESERVED. COPYRIGHT 2001 By -

| LOC | DIST | REVISIONS   |      |     |      |  |
|-----|------|-------------|------|-----|------|--|
| P   | LTR  | DESCRIPTION | DATE | DWN | APVD |  |
| -   | -    | SEE SHEET 1 | -    | -   | -    |  |



- (APPLIED TO SHEET 3)
1. TOLERANCES ON ALL DIMENSIONS ±0.15 UNLESS OTHERWISE SPECIFIED.
  2. P.C.BOARD THICKNESS APPLIES ACROSS TABS AND INCLUDES PLATING AND/OR METALIZATION.
  3. FINISH OF PAD : GOLD PLATING 0.00076 MIN. OVER Ni PLATING 0.002MIN.
- ▲ NO BURR  
 ▲ CHAMFER 0.25 MAX x 45° IF EXIST.



|       |              |       |     |     |
|-------|--------------|-------|-----|-----|
| 31.75 | 1.8V         | 17.55 | 2.4 | 2.7 |
| 25.4  | 2.5V         | 18.45 | 1.5 | 1.8 |
| H     | POWER SUPPLY | D5    | D4  | D3  |

RECOMMENDED MATING P.C.B CONFIGURATION

THIS DRAWING IS A CONTROLLED DOCUMENT.

| DIMENSIONS:      | TOLERANCES UNLESS OTHERWISE SPECIFIED: | DWN    | CHK  | APVD      | NAME                      |               |
|------------------|--|--------|------|-----------|---------------------------|---------------|
| MM               | 0 PLC ±                                |        |      |           | TE Connectivity           |               |
|                  | 1 PLC ±                                |        |      |           | DDR1 & DDR2 SODIMM SOCKET |               |
|                  | 2 PLC ±                                |        |      |           | 0.6mm PITCH 200POS        |               |
|                  | 3 PLC ±                                |        |      |           | LOW PROFILE STANDARD TYPE |               |
|                  | 4 PLC ±                                |        |      |           |                           |               |
|                  | ANGLES ±                               |        |      |           |                           |               |
| MATERIAL         | FINISH                                 | WEIGHT | SIZE | CAGE CODE | DRAWING NO                | RESTRICTED TO |
|                  |  |        | A3   | 00779     | C=1565691                 |               |
| CUSTOMER DRAWING |  | SCALE  | 2:1  | SHEET     | 3 of 4                    | REV           |
|                  |  |        |      |           |                           | G2            |

4

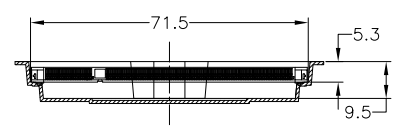
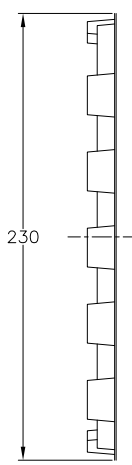
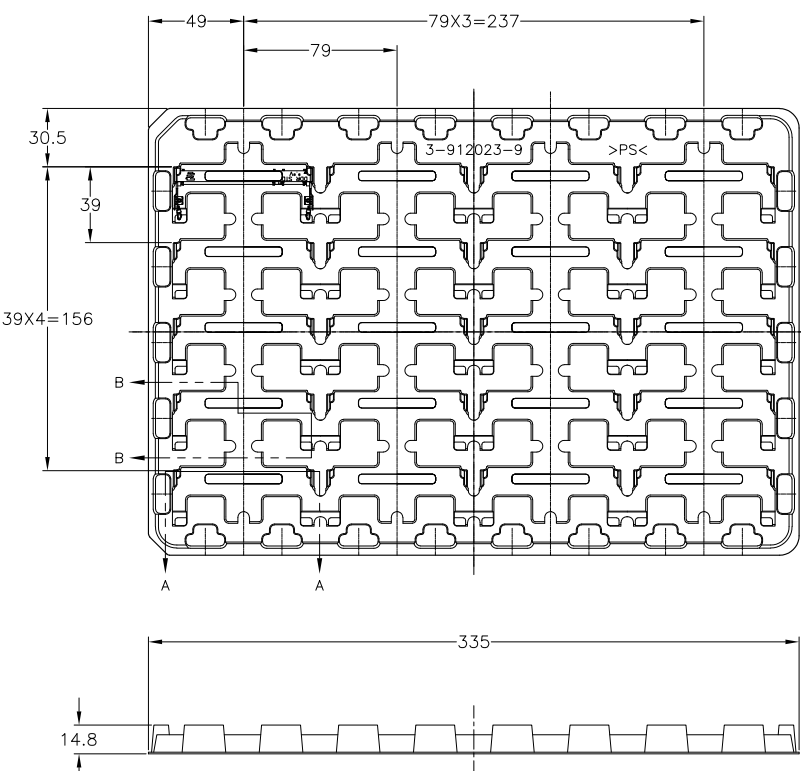
3

2

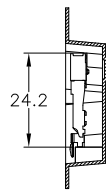
1

THIS DRAWING IS UNPUBLISHED. RELEASED FOR PUBLICATION OCT. 2001.  
 © COPYRIGHT 2001 By - ALL RIGHTS RESERVED.

| LOC | DIST | REVISIONS   |      |     |      |  |
|-----|------|-------------|------|-----|------|--|
| P   | LTR  | DESCRIPTION | DATE | DWN | APVD |  |
| -   | -    | SEE SHEET 1 | -    | -   | -    |  |



A-A  
SCALE 2:1  
(180DEG. ROTATE)



B-B  
SCALE 2:1

|                     |           |             |
|---------------------|-----------|-------------|
| 1.8V (DDR2)         | 20EA/TRAY | 1-1565691-4 |
| 1.8V (DDR2)         | 20EA/TRAY | 1565691-4   |
| 2.5V (DDR1)         | 20EA/TRAY | 1-1565691-1 |
| 2.5V (DDR1)         | 20EA/TRAY | 1565691-1   |
| POWER SUPPLY (TYPE) | QTY       | P/N         |

- (APPLIED TO SHEET 4)
- 1 THE DIRECTION OF EACH CONNECTOR ON A TRAY IS REFERRED TO THIS DRAWING.
  - 2 GENERAL TOLERANCE: ±0.5

|  |  |                  |                           |                       |
|--|--|------------------|---------------------------|-----------------------|
| THIS DRAWING IS A CONTROLLED DOCUMENT.   |  | DWN              | TE Connectivity           |                       |
| DIMENSIONS: MM   |  | CHK              |                           |                       |
| TOLERANCES UNLESS OTHERWISE SPECIFIED:<br>0 PLC ± 0.3<br>1 PLC ± 0.3<br>2 PLC ± 0.3<br>3 PLC ± 0.3<br>4 PLC ± 0.3<br>ANGLES ± 3° |  | APVD             | NAME                      |                       |
| MATERIAL   |  | PRODUCT SPEC     | DDR1 & DDR2 SODIMM SOCKET |                       |
| FINISH   |  | APPLICATION SPEC | 0.6mm PITCH 200POS        |                       |
|  |  | WEIGHT           | LOW PROFILE STANDARD TYPE |                       |
|  |  | CUSTOMER DRAWING | SIZE A3                   | RESTRICTED TO         |
|  |  |                  | CAGE CODE 00779           | DRAWING NO. C-1565691 |
|  |  |                  | SCALE 1:2                 | SHEET 4 of 4          |
|  |  |                  |                           | REV G2                |