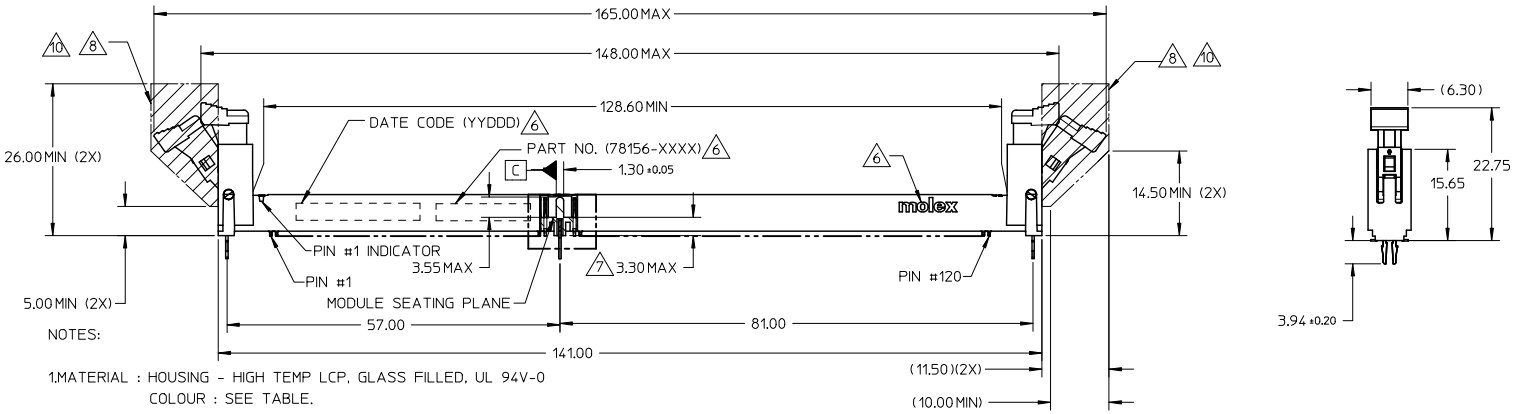
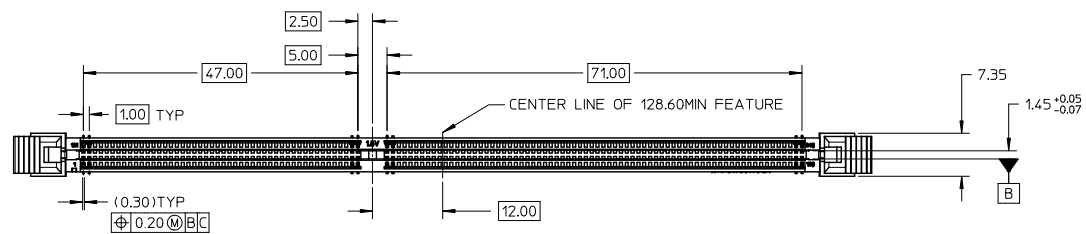


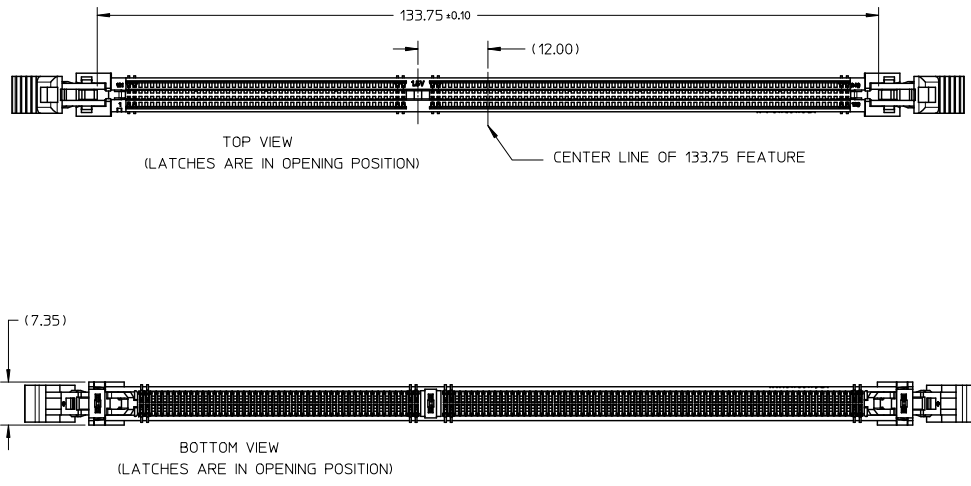
10 9 8 7 6 5 4 3 2 1



NOTES:
 1. MATERIAL : HOUSING - HIGH TEMP LCP, GLASS FILLED, UL 94V-0
 COLOUR : SEE TABLE.
 LATCH - HIGH TEMP NYLON, GLASS FILLED, UL 94V-0
 COLOUR : SEE TABLE.
 TERMINAL : COPPER ALLOY.
 2. FINISHES - SEE TABLE ON SHEET 2.
 3. PRODUCT SPECIFICATION : SEE TABLE.
 4. PRODUCT SHALL BE PACKED IN TRAY - SEE SHEET 5.
 5. CARD SLOT ACCEPTS 1.27±0.10MM MODULE THICKNESS
 (MEASURED FROM P.C. PADS).

- 6 MOLEX LOGO, DATE & PART NO. INDICATED ON HOUSING.
- 7 MODULE SEATING PLANE FROM TOP OF PCB.
- 8 KEEP OUT ZONE RESERVED FOR LATCH.
- 9 KEEP OUT AREA IS THE AREA WHERE THE CONNECTOR (INCLUDED LATCHES IN OPENING POSITION) IS MOUNTED ON THE PCB.
- 10 KEEP OUT ZONE AS PER JEDEC SO-007.
- 11 FORKLICK DETAIL VIEW.

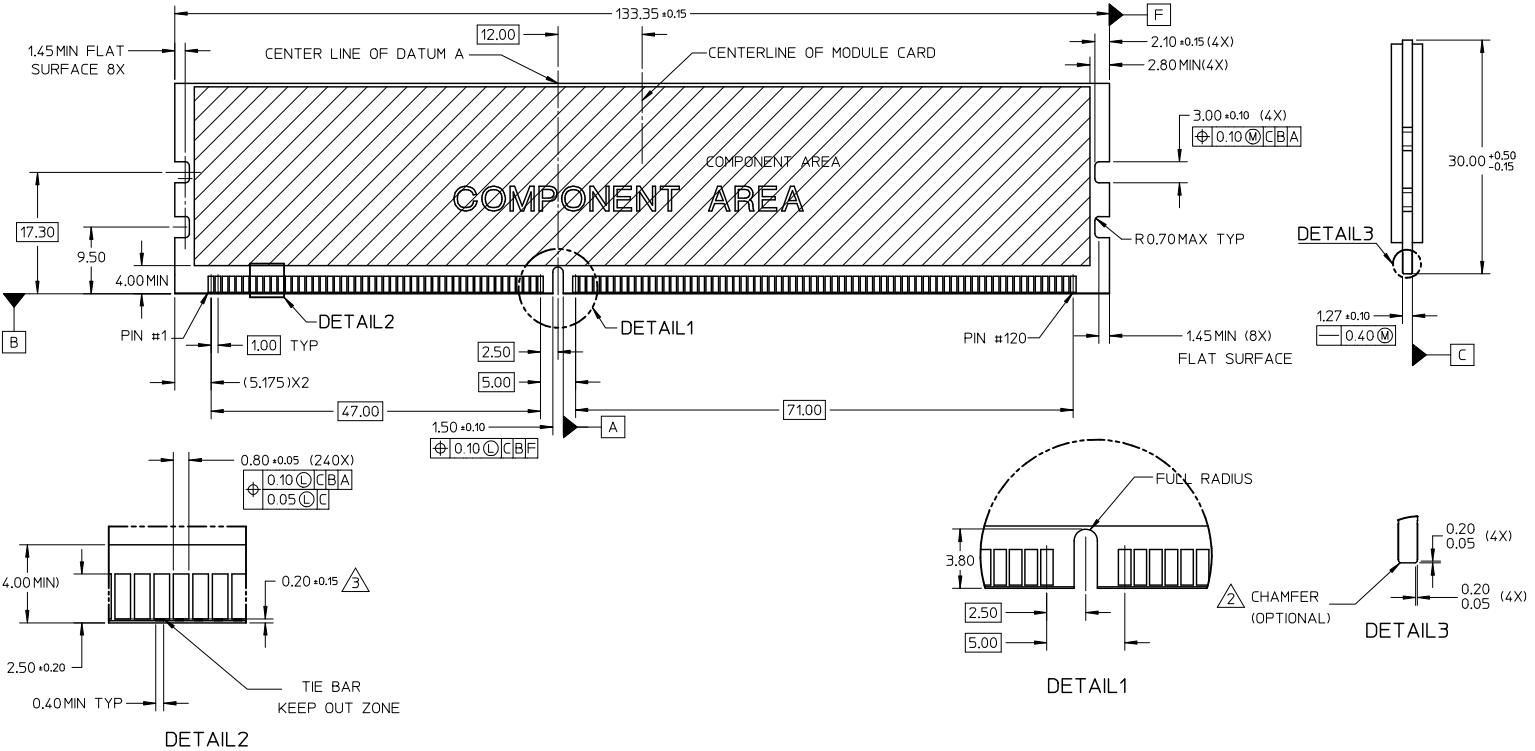
REVISED EEC NO: S2009-0916 DRAWN: MIEO CHYK: CJTAN APPR: SHLENI 2009/06/26 2009/06/26 2009/06/26 A1	DESCRIPTION QUALITY SYMBOLS ▽=0 ▽=0 DRAFT WHERE APPLICABLE MUST REMAIN WITHIN DIMENSIONS	GENERAL TOLERANCES (UNLESS SPECIFIED)		DIMENSION STYLE MM ONLY		SCALE NTS	DESIGN UNITS METRIC	THIRD ANGLE PROJECTION			
		4 PLACES ± --- ± ---	mm	INCH	DRAWN BY DWLEE01	DATE 2007/05/07	TITLE DDR3 DIMM, 100MM PITCH 240 CKTS, VERTICAL SMT				
		3 PLACES ± --- ± ---			CHECKED BY YTYANG01	DATE 2007/07/06					
		2 PLACES ± 0.2 ± ---			APPROVED BY SHLENI		DATE 2007/07/06	MOLEX INCORPORATED DOCUMENT NO. SD-78156-001 SHEET NO. 1 OF 6			
		1 PLACE ± --- ± ---			MATERIAL NO. SEE TABLE		SIZE A3				
THIS DRAWING CONTAINS INFORMATION THAT IS PROPRIETARY TO MOLEX INCORPORATED AND SHOULD NOT BE USED WITHOUT WRITTEN PERMISSION											



REVISED EEC NO: S2009-0916 DRAWN: MIEO 2009/06/26 CHECKED: CJTAN 2009/06/26 APPR: SHLENI 2009/06/26 A1	DESCRIPTION REV	QUALITY SYMBOLS	GENERAL TOLERANCES (UNLESS SPECIFIED)	DIMENSION STYLE MM ONLY	SCALE NTS	DESIGN UNITS METRIC	THIRD ANGLE PROJECTION																											
		$\blacktriangledown = 0$ $\nabla = 0$	<table border="1"> <tr><th></th><th>mm</th><th>INCH</th></tr> <tr><td>4 PLACES</td><td>± ---</td><td>± ---</td></tr> <tr><td>3 PLACES</td><td>± ---</td><td>± ---</td></tr> <tr><td>2 PLACES</td><td>± 0.2</td><td>± ---</td></tr> <tr><td>1 PLACE</td><td>± ---</td><td>± ---</td></tr> </table>		mm	INCH	4 PLACES	± ---	± ---	3 PLACES	± ---	± ---	2 PLACES	± 0.2	± ---	1 PLACE	± ---	± ---	<table border="1"> <tr><th>DRAWN BY</th><th>DATE</th></tr> <tr><td>DWLEE01</td><td>2007/05/07</td></tr> <tr><th>CHECKED BY</th><th>DATE</th></tr> <tr><td>YTYANG01</td><td>2007/07/06</td></tr> <tr><th>APPROVED BY</th><th>DATE</th></tr> <tr><td>SHLENI</td><td>2007/07/06</td></tr> </table>	DRAWN BY	DATE	DWLEE01	2007/05/07	CHECKED BY	DATE	YTYANG01	2007/07/06	APPROVED BY	DATE	SHLENI	2007/07/06	TITLE	DDR3 DIMM, 100MM PITCH 240 CKTS, VERTICAL SMT	
			mm	INCH																														
		4 PLACES	± ---	± ---																														
3 PLACES	± ---	± ---																																
2 PLACES	± 0.2	± ---																																
1 PLACE	± ---	± ---																																
DRAWN BY	DATE																																	
DWLEE01	2007/05/07																																	
CHECKED BY	DATE																																	
YTYANG01	2007/07/06																																	
APPROVED BY	DATE																																	
SHLENI	2007/07/06																																	
DRAFT WHERE APPLICABLE MUST REMAIN WITHIN DIMENSIONS			MATERIAL NO. SEE TABLE	MOLEX INCORPORATED DOCUMENT NO. SD-78156-001	SHEET NO. 2 OF 6																													

10 9 8 7 6 5 4 3 2 1

MODULE CARD
 DDR3 DUAL IN-LINE MEMORY MODULE FAMILY 1.00MM CONTACT CENTERS
 (JEDEC MO-269, ISSUE A, 12/05)



- NOTES:
- RECOMMENDED PLATING FOR CONTACT PADS:
 PREFERRED: 0.76 MICROMETERS GOLD PLATING MIN OVER 2.00 MICROMETERS NICKEL.
 ALTERNATIVE: 0.05-0.75 MICROMETERS GOLD PLATING OVER 2.00 MICROMETERS NICKEL MUST USE AN ELECTRONIC CONTACT GRADE CORROSIVE BARRIER LUBRICANT.
 - CHAMFER IS OPTIONAL AND IS NOT TO HIT THE GOLD PADS.
 - LEADING EDGE OF GOLD PADS SPECIFIED BY KEEPOUT ZONE SHALL BE FREE OF BURRS AND EXTERNAL TIE BARS.

REVISED ELC NO: S22009-0916 2009/06/26 DRAWN: MIEDO 2009/06/26 CHECKED: CJTAN 2009/06/26 APPR: SHLENI 2009/06/26 DESCRIPTION A1 REV	QUALITY SYMBOLS	GENERAL TOLERANCES (UNLESS SPECIFIED)	DIMENSION STYLE MM ONLY	SCALE NTS	DESIGN UNITS METRIC	THIRD ANGLE PROJECTION																											
	$\nabla=0$ $\nabla=0$	<table border="1"> <tr> <th></th> <th>mm</th> <th>INCH</th> </tr> <tr> <td>4 PLACES</td> <td>± ---</td> <td>± ---</td> </tr> <tr> <td>3 PLACES</td> <td>± ---</td> <td>± ---</td> </tr> <tr> <td>2 PLACES</td> <td>± 0.2</td> <td>± ---</td> </tr> <tr> <td>1 PLACE</td> <td>± ---</td> <td>± ---</td> </tr> </table>		mm	INCH	4 PLACES	± ---	± ---	3 PLACES	± ---	± ---	2 PLACES	± 0.2	± ---	1 PLACE	± ---	± ---	<table border="1"> <tr> <th>DRAWN BY</th> <th>DATE</th> </tr> <tr> <td>DWLEE01</td> <td>2007/05/07</td> </tr> <tr> <th>CHECKED BY</th> <th>DATE</th> </tr> <tr> <td>TYANG01</td> <td>2007/07/06</td> </tr> <tr> <th>APPROVED BY</th> <th>DATE</th> </tr> <tr> <td>SHLENI</td> <td>2007/07/06</td> </tr> </table>	DRAWN BY	DATE	DWLEE01	2007/05/07	CHECKED BY	DATE	TYANG01	2007/07/06	APPROVED BY	DATE	SHLENI	2007/07/06	TITLE		
		mm	INCH																														
	4 PLACES	± ---	± ---																														
3 PLACES	± ---	± ---																															
2 PLACES	± 0.2	± ---																															
1 PLACE	± ---	± ---																															
DRAWN BY	DATE																																
DWLEE01	2007/05/07																																
CHECKED BY	DATE																																
TYANG01	2007/07/06																																
APPROVED BY	DATE																																
SHLENI	2007/07/06																																
	DRAFT WHERE APPLICABLE MUST REMAIN WITHIN DIMENSIONS	SEE TABLE			DDR3 DIMM, 1.00MM PITCH 240 CKTS, VERTICAL SMT MOLEX INCORPORATED SD-78156-001 SHEET NO. 3 OF 6																												

tb_frame_A3_P_AM.T
 Rev. E 2006/04/15

10 9 8 7 6 5 4 3 2 1

F

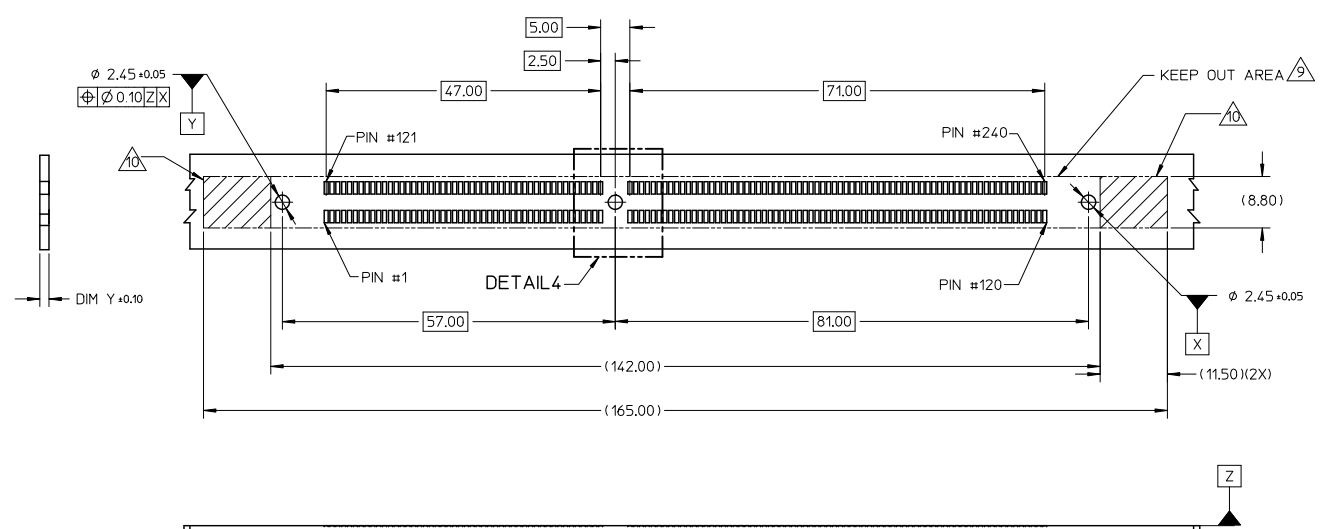
E

D

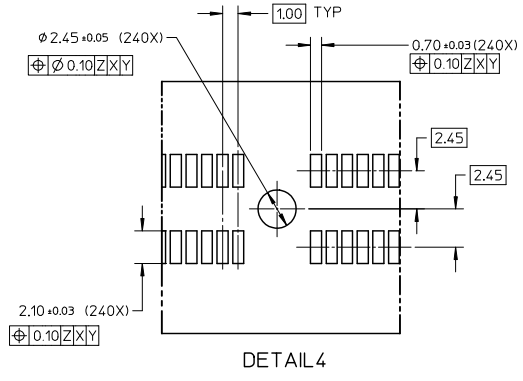
C

B

A



RECOMMENDED PCB THICKNESS 1.57MM TO 3.18MM
RECOMMENDED STENCIL THICKNESS = 150 MICROMETERS

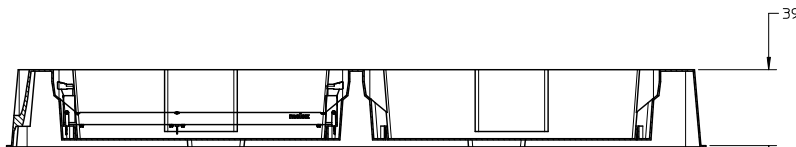
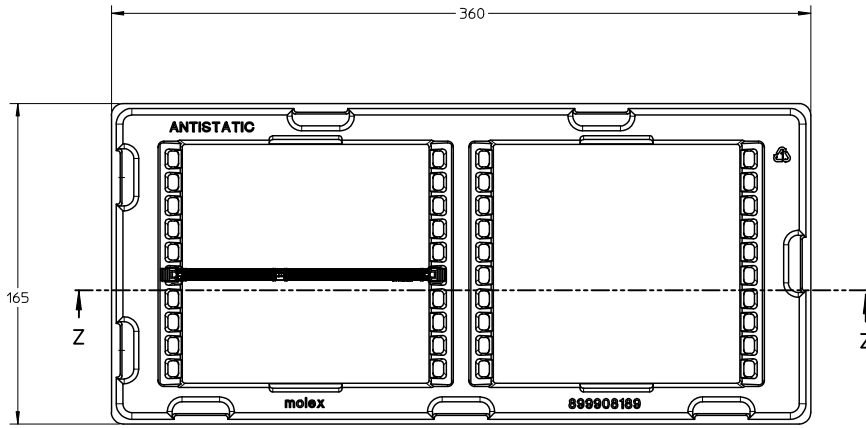


DETAIL4

REVISED E.C. NO: S22009-0916 DRAWN: MIEDO CHECKED: CJIAN APPR: SHLENI 2009/06/26 2009/06/26 2009/06/26 2009/06/26 A1	QUALITY SYMBOLS ▽=0 ▽=0	GENERAL TOLERANCES (UNLESS SPECIFIED)		DIMENSION STYLE MM ONLY		SCALE NTS	DESIGN UNITS METRIC	THIRD ANGLE PROJECTION			
		4 PLACES ± --- ± ---	3 PLACES ± --- ± ---	2 PLACES ± 0.2 ± ---	1 PLACE ± --- ± ---	ANGULAR ± 1°	DRAFT WHERE APPLICABLE MUST REMAIN WITHIN DIMENSIONS	DRAWN BY DWLEE01	DATE 2007/05/07	CHECKED BY YTYANG01	DATE 2007/07/06
		APPROVED BY SHLENI		DATE 2007/07/06		MATERIAL NO. SEE TABLE		DOCUMENT NO. SD-78156-001		SHEET NO. 4 OF 6	
		TITLE DDR3 DIMM, 100MM PITCH 240 CKTS, VERTICAL SMT									

tb_frame_A3_P_AM.T
Rev. E 2006/04/15

VIEW OF PACKAGING TRAY



SECTION Z-Z

NOTE:

1. CAVITY QTY , 20PCS

REVISED E.C. NO: S2009-0916 DRAWN: COTEO CHECKED: GAN APPR: SHLENI 2009/06/26 2009/06/26 2009/06/26	QUALITY SYMBOLS ▽=0 ▽=0	GENERAL TOLERANCES (UNLESS SPECIFIED)		DIMENSION STYLE MM ONLY		SCALE NTS	DESIGN UNITS METRIC	THIRD ANGLE PROJECTION	
			mm	INCH	DRAWN BY DWLEE01	DATE 2007/05/07	TITLE DDR3 DIMM, 1.00MM PITCH 240 CKTS, VERTICAL SMT		
		4 PLACES	± ---	± ---	CHECKED BY YTYANG01	DATE 2007/07/06	APPROVED BY SHLENI		
		3 PLACES	± ---	± ---	DATE 2007/07/06	MATERIAL NO. SEE TABLE			
	2 PLACES	± 0.2	± ---	APPROVED BY SHLENI		DOCUMENT NO. SD-78156-001		SHEET NO. 5 OF 6	
	1 PLACE	± ---	± ---	ANGULAR ± 1 °		MOLEX INCORPORATED			
DRAFT WHERE APPLICABLE MUST REMAIN WITHIN DIMENSIONS				SIZE A3		THIS DRAWING CONTAINS INFORMATION THAT IS PROPRIETARY TO MOLEX INCORPORATED AND SHOULD NOT BE USED WITHOUT WRITTEN PERMISSION			

10 | 9 | 8 | 7 | 6 | 5 | 4 | 3 | 2 | 1

PART NO.	VOLTAGE KEY POS.	DIM X	PCB THICKNESS DIM Y (mm)	PLATING OPTION	HOUSING COLOUR	LATCH COLOUR	PRODUCT SPEC.
78156-0001	CENTER (1.5)	3.94	1.57 - 3.18	0.76 MICROMETER/ 30 MICROINCH MIN. GOLD ON CONTACT 2.54 MICROMETER/ 100 MICROINCH MIN. PURE TIN (MATTE) ON SOLDEXTAILS 1.27 MICROMETER/ 50 MICROINCH MIN. NICKEL UNDERPLATE	BLACK	BLACK	PS-78156-001
78156-0003		3.94	1.57 - 3.18		NATURAL (IVORY)	NATURAL (IVORY)	
78156-0005		3.94	1.57 - 3.18		BLACK	NATURAL (IVORY)	
78156-0102		3.94	1.57 - 3.18	0.38 MICROMETER/ 15 MICROINCH MIN. GOLD ON CONTACT 2.54 MICROMETER/ 100 MICROINCH MIN. PURE TIN (MATTE) ON SOLDEXTAILS 1.27 MICROMETER/ 50 MICROINCH MIN. NICKEL UNDERPLATE	NATURAL (IVORY)	NATURAL (IVORY)	PS-78156-002

REVISED EEC NO: S22009-09% 2009/06/26 DRAWN: MIED 2009/06/26 CHECKED: TAN 2009/06/26 APPR: SHLENI 2009/06/26 DESCRIPTION REV A1	QUALITY SYMBOLS	GENERAL TOLERANCES (UNLESS SPECIFIED)	DIMENSION STYLE	SCALE	DESIGN UNITS	THIRD ANGLE PROJECTION
	$\nabla = 0$ $\nabla = 0$	mm INCH	MM ONLY	NTS	METRIC	
		4 PLACES ± --- ± ---	DRAWN BY DATE	TITLE		
		3 PLACES ± --- ± ---	DWLEE01 2007/05/07	DDR3 DIMM, 100MM PITCH		
		2 PLACES ± 0.2 ± ---	CHECKED BY DATE	240 CKTS, VERTICAL SMT		
	1 PLACE ± --- ± ---	YTYANG01 2007/07/06				
	ANGULAR ± 1°	APPROVED BY DATE	MOLEX INCORPORATED			
	DRAFT WHERE APPLICABLE MUST REMAIN WITHIN DIMENSIONS	SHLENI 2007/07/06	MATERIAL NO.	DOCUMENT NO.	SHEET NO.	
		SEE TABLE		SD-78156-001	6 OF 6	
			SIZE A3	THIS DRAWING CONTAINS INFORMATION THAT IS PROPRIETARY TO MOLEX INCORPORATED AND SHOULD NOT BE USED WITHOUT WRITTEN PERMISSION		

tb_frame_A3_P_AM_T
Rev. E 2006/04/15

9 | 8 | 7 | 6 | 5 | 4 | 3 | 2 | 1