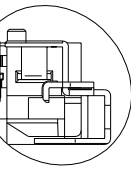
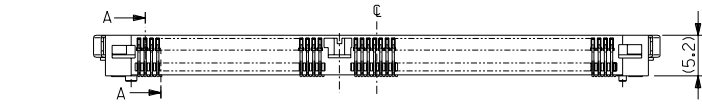
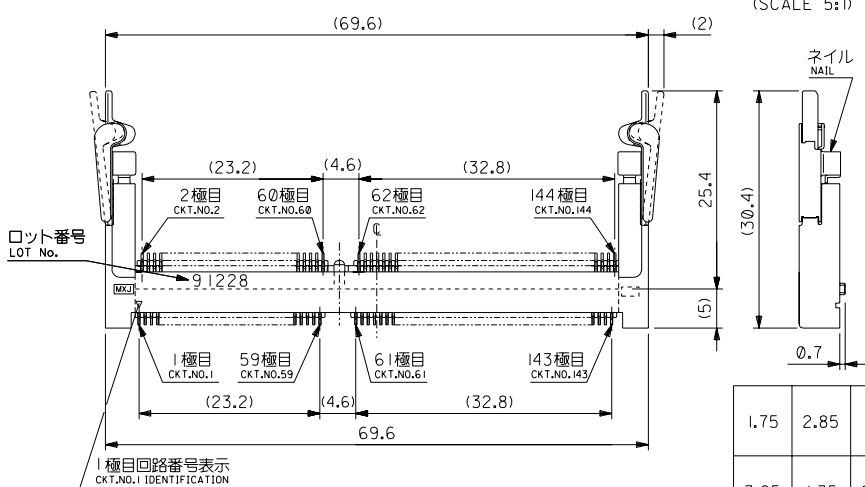
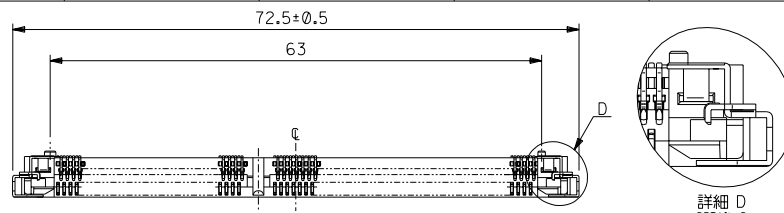
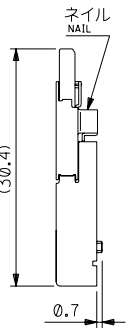


DWG. NO. SD-54698-004



詳細 D
DETAIL D
(SCALE 5:1)



- 注記 NOTES
- 材料 MATERIAL: ハウジング : ガラス入り耐熱樹脂、白色、UL94V-0
ターミナル : 燐青銅
ネイル : 黄銅
NAIL : BRASS
 - めっき仕様 PLATING: ロングターミナル
LONG TERMINAL
接点部 : 金めっき 0.25μmMIN.
CONTACT AREA : GOLD 0.25 MICROMETER MINIMUM.
半田付け部 : 錫めっき 1.0μmMIN.
SOLDER TAIL AREA : TIN 1.0 MICROMETER MINIMUM.
下地めっき : ニッケルのめっき 2.0μmMIN.
UNDER-PLATING : NICKEL 2.0 MICROMETER MINIMUM.
ショートターミナル
SHORT TERMINAL
接点部 : 金めっき 0.25μmMIN.
CONTACT AREA : GOLD 0.25 MICROMETER MINIMUM.
半田付け部 : 錫めっき 1.0μmMIN.
SOLDER TAIL AREA : TIN 1.0 MICROMETER MINIMUM.
下地めっき : ニッケルのめっき 2.0μmMIN.
UNDER-PLATING : NICKEL 2.0 MICROMETER MINIMUM.
ネイル
NAIL
錫めっき : 1.0μmMIN.
TIN : 1.0 MICROMETER MINIMUM.
下地めっき : ニッケルのめっき 1.0μmMIN.
UNDER-PLATING : NICKEL 1.0 MICROMETER MINIMUM.
 - テール平坦度は、0.1 MAX.とする。
TAIL COPLANARITY TO BE 0.1 MAX.
ネイル平坦度は、0.1 MAX.とする。
NAIL COPLANARITY TO BE 0.1 MAX.
 - 本製品は54698-144*の鉛フリー品である。
THIS PRODUCT IS LEAD FREE OF 54698-144*.

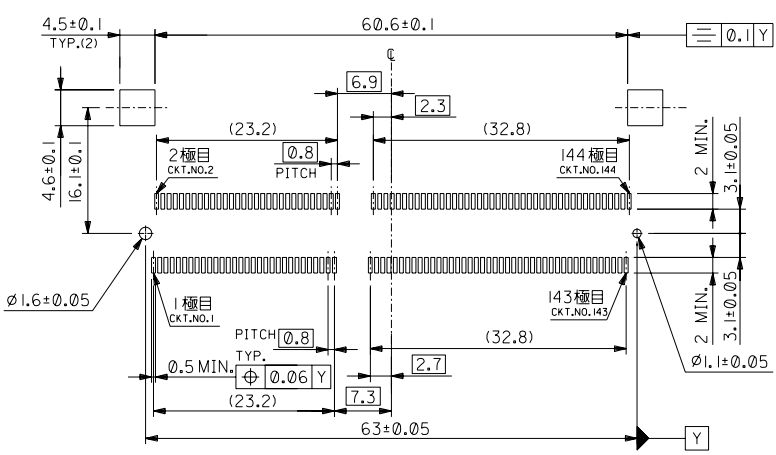
| | | | | | | | | |
|------|------|------|------|------|--------------|--------------------------------------|--------------|------------|
| 1.75 | 2.85 | 1.35 | 3.25 | 4.05 | ***V | ハードトレイ (高さ9) HARD TRAY(HIGHT 9) | 54698-7008 | 54698-700* |
| | | | | | | ハードトレイ (高さ11) HARD TRAY(HIGHT 11) | 54698-7005 | |
| | | | | | | 標準トレイ NORMAL TRAY | 54698-7002 | |
| 3.25 | 1.35 | 2.85 | 1.75 | 5.55 | 5.0V | ハードトレイ (高さ9) HARD TRAY(HIGHT 9) | 54698-7007 | |
| | | | | | | ハードトレイ (高さ11) HARD TRAY(HIGHT 11) | 54698-7004 | |
| | | | | | | 標準トレイ NORMAL TRAY | 54698-7001 | |
| | | | | | | ハードトレイ (高さ9) HARD TRAY(HIGHT 9) | 54698-7006 | |
| | | | | | | ハードトレイ (高さ11) HARD TRAY(HIGHT 11) | 54698-7003 | |
| | | | | | | 標準トレイ NORMAL TRAY | 54698-7000 | |
| E | D | C | B | A | POWER SUPPLY | 梱包トレイ PACKAGING TRAY | MATERIAL NO. | |

DO NOT SCALE DRAWING

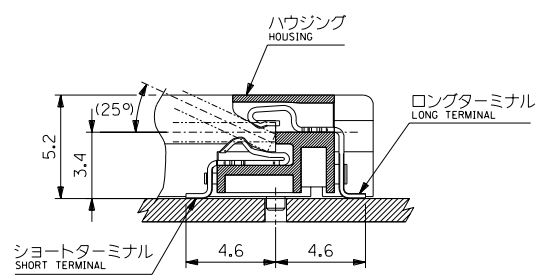
| | | | | | | | | | | | | | | | | | | |
|----------------------------------|----------------------------------|----------------------------------|----------------------------------|----------------------------------|---|-------------------------------------|------------------------------------|----------------------|--------------------|---|--------------|--|--|---|------------------------------|---------------------------|---------------|----------|
| EC NO. DRWN: CHK: APPR: | EC NO. DRWN: CHK: APPR: | EC NO. DRWN: CHK: APPR: | EC NO. DRWN: CHK: APPR: | EC NO. DRWN: CHK: APPR: | EC NO. J2004-4231 DRWN: M.NAGATA CHK: K.TOJO APPR: M.SASAO | MATERIAL 材料 注記参照 SEE NOTES | FINISH 仕上げ 注記参照 SEE NOTES | WIRE RANGE 適用電線範囲 | INS. RANGE 被覆外径 | GENERAL TOLERANCES: (UNLESS SPECIFIED) 一般公差 | SCALE 2:1 | DESIGN UNITS <input checked="" type="checkbox"/> mm <input type="checkbox"/> INCH | THIRD ANGLE PROJECTION <input type="checkbox"/> mm <input type="checkbox"/> INCH <input checked="" type="checkbox"/> mm ONLY | TITLE: 0.8mm PITCH S.O.DIMM SOCKET 144CKT. HEIGHT5.2mm -LEAD FREE- | MATERIAL NO. SD-54698-004 | MODEL NO. SD-54698-004 | SHT 1 OF 3 | REV B |
| | | | | | RELEASED | | | | | 10 UNDER 未満 | | | | | | | | |
| | | | | | | | | | | 10 OVER 以上 | | | | | | | | |
| | | | | | | | | | | 30 UNDER 未満 | | | | | | | | |
| | | | | | | | | | | 30 OVER 以上 | | | | | | | | |
| | | | | | | | | | | ANGLE 角度 | | | | | | | | |
| | | | | | | | | | | | | | | | | | | |

DWG. NO. SD-54698-004
DO NOT SCALE DRAWING

8 7 6 5 4 3 2 1



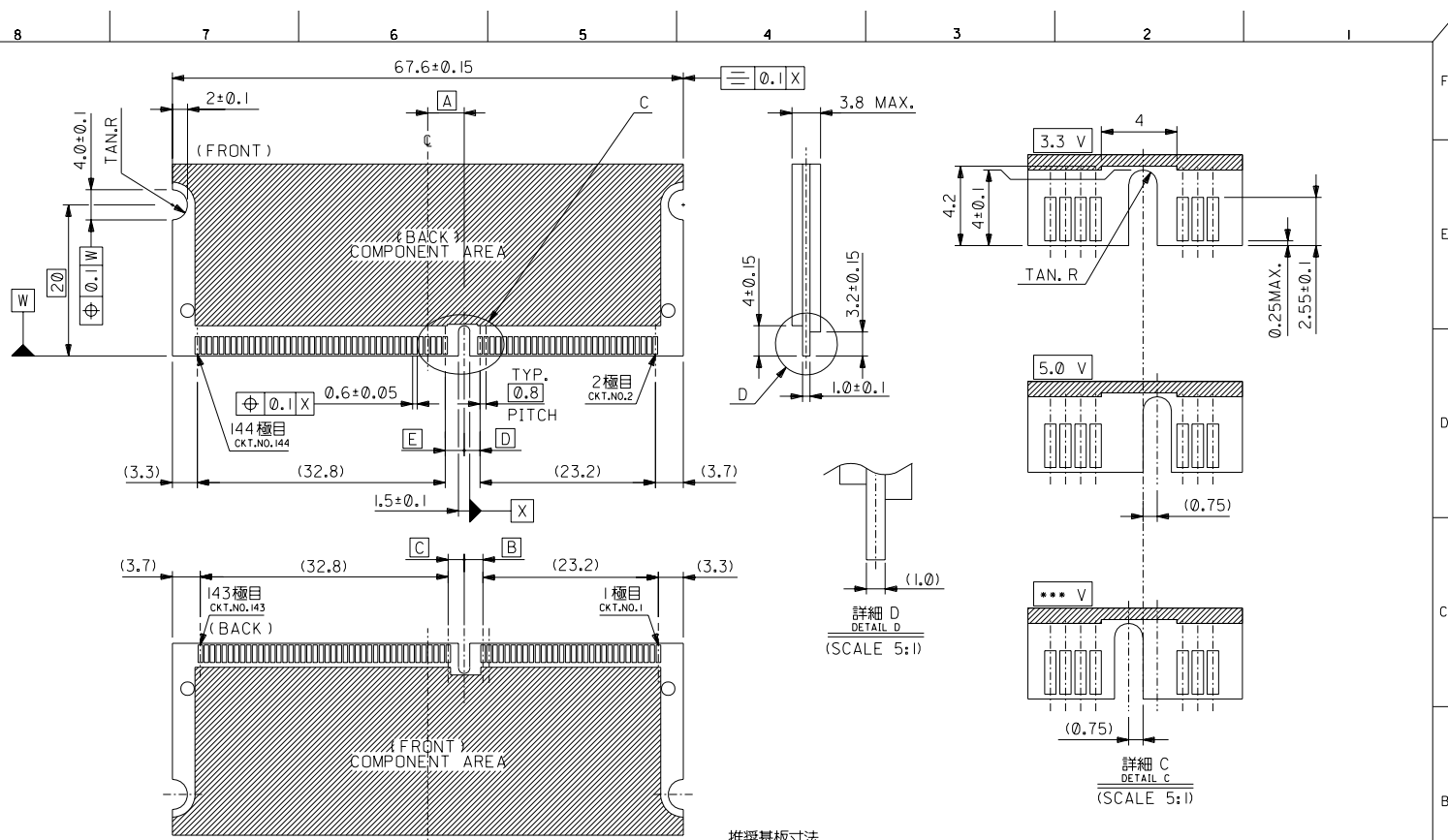
推奨基板寸法
RECOMMENDED PCB PATTERN LAYOUT
(THK:1.2±0.1)



断面A-A
SECTION A-A
(SCALE 5:1)

| | | | | | | | | | | | | | | | | | | | | | |
|---|--|----------------------------------|--|----------------------------------|--|----------------------------------|--|----------------------------------|--|----------------------------------|-------------------------------------|---|---|---|--------------|---|--|--|------------|--|--|
| EC NO. DRWN: CHK: APPR: | | EC NO. DRWN: CHK: APPR: | | EC NO. DRWN: CHK: APPR: | | EC NO. DRWN: CHK: APPR: | | EC NO. DRWN: CHK: APPR: | | EC NO. DRWN: CHK: APPR: | MATERIAL 材料 注記参照 SEE NOTES | | GENERAL TOLERANCES: (UNLESS SPECIFIED) 一般公差 | | SCALE 2:1 | MODEL NO. DESIGN UNITS 54698-700* <input checked="" type="checkbox"/> mm <input type="checkbox"/> INCH | DIMENSIONS: <input type="checkbox"/> mm <input type="checkbox"/> INCH <input checked="" type="checkbox"/> mm ONLY | | SHT REV | | |
| DESCRIPTION 仕上付 注記参照 SEE NOTES | | | | | | | | | | | 10 UNDER 未満 | | +0.2 | DRAWN BY & DATE M.NAGATA '04/05/14 | | TITLE: 0.8mm PITCH S.O.DIMM SOCKET I44CKT. HEIGHT5.2mm -LEAD FREE- | | | | REVISE ON CAD ONLY | |
| WIRE RANGE 適用電線範囲 | | | | | | | | | | | 10 OVER 以上 | | +0.25 | CHECKED BY & DATE K.TOJO '04/05/14 | | MATERIAL NO. SEE CHART DRAWING NO. SD-54698-004 SHEET NO. 2 OF 3 | | | | | |
| INS. RANGE 被覆外径 | | | | | | | | | | | 30 OVER 以上 | | +0.3 | APPROVED BY & DATE M.SASAO '04/05/14 | | | | | | MATERIAL NO. SEE CHART DRAWING NO. SD-54698-004 SHEET NO. 2 OF 3 | |
| REV 0 | | | | | | | | | | | ANGLE 角度 | | +3° | CAD FILENAME SD-54698-004.S02 | | THIS DRAWING CONTAINS INFORMATION THAT IS PROPRIETARY TO MOLEX INCORPORATED AND SHOULD NOT BE USED WITHOUT WRITTEN PERMISSION. | | | | | |
| 8 | | 7 | | 6 | | 5 | | 4 | | 3 | | 2 | | 1 | | EN-02J(097) MXJ-54 | | | | | |

DWG. NO. SD-54698-004



推奨基板寸法
RECOMMENDED MATING BOARD CONFIGURATION
(THK:1.0±0.1)

DO NOT SCALE DRAWING

| | | | | | | | | | | | | | | | |
|----------------------------------|----------------------------------|----------------------------------|----------------------------------|----------------------------------|---|-------------|-------------------------------------|------------------------------------|---------------------------------|---|---|---|---|--|---------------------|
| EC NO. DRWN: CHK: APPR: | EC NO. DRWN: CHK: APPR: | EC NO. DRWN: CHK: APPR: | EC NO. DRWN: CHK: APPR: | EC NO. DRWN: CHK: APPR: | EC NO. SEE 1 OF 3 DRWN: CHK: APPR: | DESCRIPTION | MATERIAL 材料 注記参照 SEE NOTES | FINISH 仕上り 注記参照 SEE NOTES | WIRE RANGE 適用電線範囲 | INS. RANGE 被覆外径 | GENERAL TOLERANCES: (UNLESS SPECIFIED) 一般公差 | SCALE 2:1 | MODEL NO. DESIGN UNITS 54698-700* <input checked="" type="checkbox"/> mm <input type="checkbox"/> INCH | DIMENSIONS: <input type="checkbox"/> mm <input type="checkbox"/> INCH <input checked="" type="checkbox"/> mm ONLY | SHT REV |
| 8 | 7 | 6 | 5 | 4 | 3 | 2 | | | | 10 UNDER 未満 +0.2 | DRAWN BY & DATE M.NAGATA '04/05/14 | TITLE: 0.8mm PITCH S.O.DIMM SOCKET I44CKT. HEIGHT5.2mm -LEAD FREE- | MATERIAL NO. DRAWING NO. SD-54698-004 | SHEET NO. 3 OF 3 | |
| | | | | | | | | | 10 OVER 30 UNDER 以上 未満 +0.25 | CHECKED BY & DATE K.TOJO '04/05/14 | MATERIAL NO. DRAWING NO. SD-54698-004 | | | | SHEET NO. 3 OF 3 |
| | | | | | | | | | 30 OVER 以上 +0.3 | APPROVED BY & DATE M.SASAO '04/05/14 | | | | | |
| | | | | | | | | | | | CAD FILENAME SD-54698-004.S03 | THIS DRAWING CONTAINS INFORMATION THAT IS PROPRIETARY TO MOLEX INCORPORATED AND SHOULD NOT BE USED WITHOUT WRITTEN PERMISSION. | | EN-02J(097) MXJ-54 | |