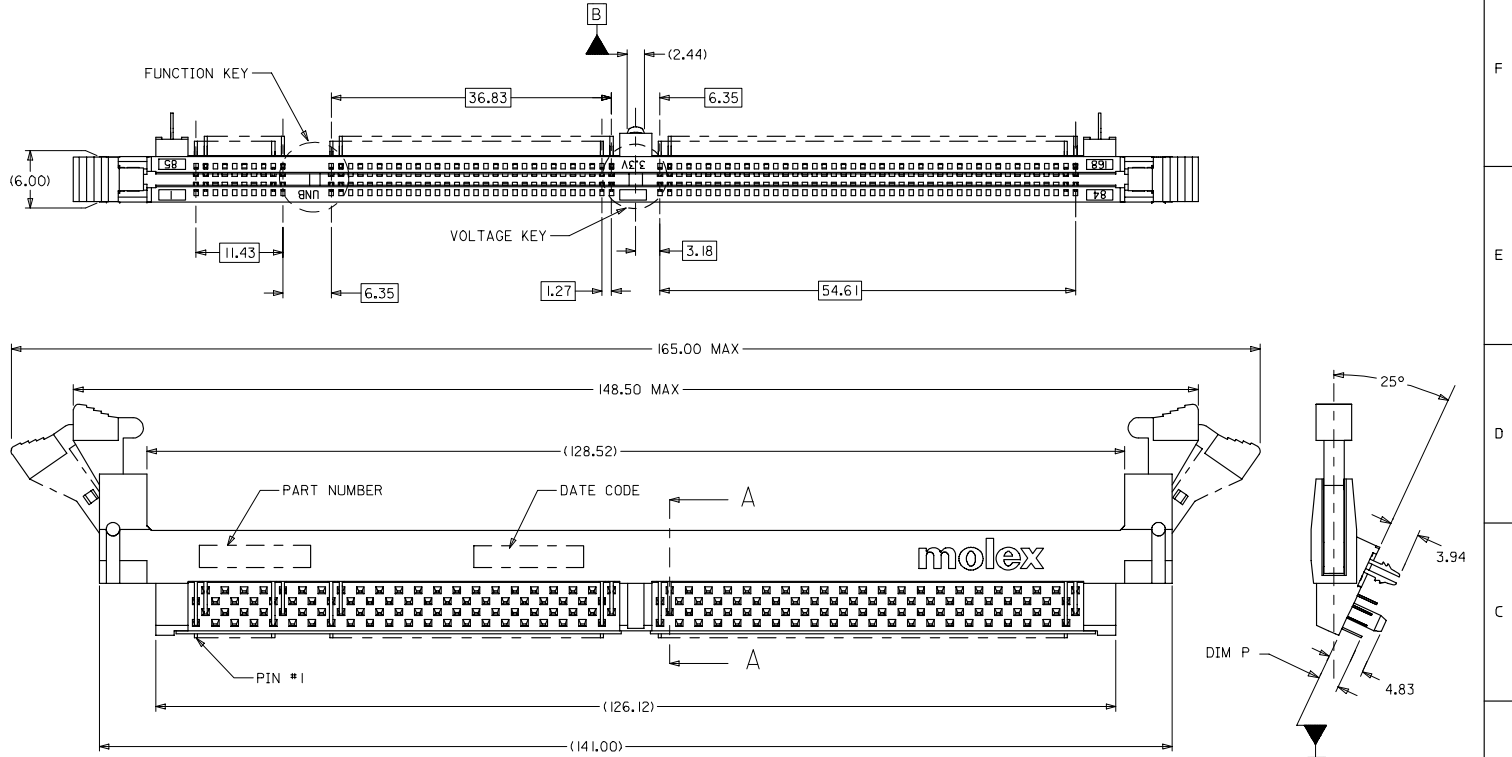


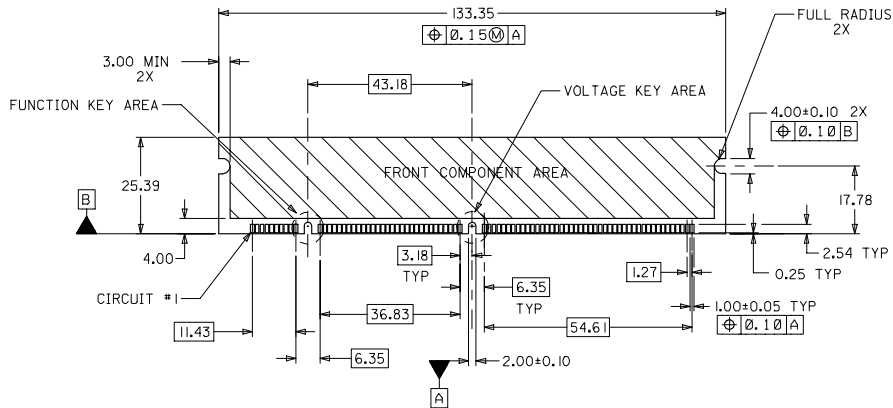
10 9 8 7 6 5 4 3 2 1



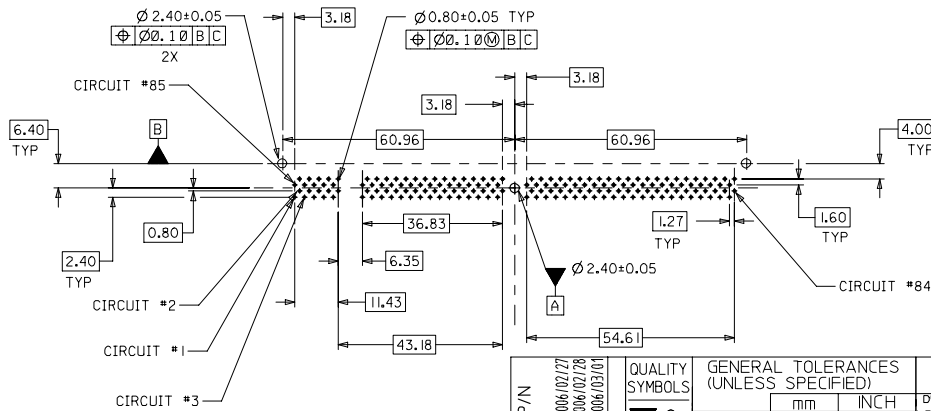
- NOTES:
- MATERIALS: HOUSING - LCP, GLASS FILLED, UL 94V-0  
COLOR: BLACK  
LATCH - HIGH TEMP NYLON, GLASS FILLED, UL94V-0  
COLOR: BEIGE  
TERMINAL AND FORKLOCK - COPPER ALLOY
  - FINISHES: CONTACT AREA: SEE TABLE ON SHEET 4  
SOLDER TAILS: 2.54uM/100u' MIN. TIN
  - PRODUCT SPECIFICATIONS: PS-87587-007 FOR PERFORMANCE SPECIFICATIONS.
  - DATE CODE SHALL BE MARKED LEGIBLY AS SHOWN: XX XXX  
YEAR                      DAY
  - PART NUMBER SHALL BE MARKED LEGIBLY AS SHOWN: 87587-0XXX  
REFER TO THE TABLE

OBS TIN/LEAD P/N EC NO. S2006-0734 DRAWING NO. 2006/02/27 CHKD: HHO APPR: GLEE REV D	DESCRIPTION 2006/03/01	QUALITY SYMBOLS	GENERAL TOLERANCES (UNLESS SPECIFIED)	DIMENSION STYLE	SCALE	DESIGN UNITS	THIRD ANGLE PROJECTION																												
		$\nabla=0$ $\nabla=0$	<table border="1"> <tr><th>mm</th><th>INCH</th></tr> <tr><td>4 PLACES ± .005</td><td>± .005</td></tr> <tr><td>3 PLACES ± .005</td><td>± .005</td></tr> <tr><td>2 PLACES ± 0.25</td><td>± .005</td></tr> <tr><td>1 PLACE ± .005</td><td>± .005</td></tr> <tr><td colspan="2">ANGULAR ± 5°</td></tr> </table>	mm	INCH	4 PLACES ± .005	± .005	3 PLACES ± .005	± .005	2 PLACES ± 0.25	± .005	1 PLACE ± .005	± .005	ANGULAR ± 5°		MM ONLY	NTS	METRIC	<table border="1"> <tr><th>DRAWN BY</th><th>DATE</th></tr> <tr><td>LPLIM</td><td>1999/03/19</td></tr> <tr><th>CHECKED BY</th><th>DATE</th></tr> <tr><td>XCLING</td><td>1999/06/14</td></tr> <tr><th>APPROVED BY</th><th>DATE</th></tr> <tr><td>SKTOH</td><td>1999/06/15</td></tr> </table>	DRAWN BY	DATE	LPLIM	1999/03/19	CHECKED BY	DATE	XCLING	1999/06/14	APPROVED BY	DATE	SKTOH	1999/06/15	<table border="1"> <tr><th>TITLE</th></tr> <tr><td>DIMM, 1.27MM PITCH 168 CKTS, MULTI-KEY 25 DEG</td></tr> </table>	TITLE	DIMM, 1.27MM PITCH 168 CKTS, MULTI-KEY 25 DEG	<table border="1"> <tr><th>DOCUMENT NO.</th></tr> <tr><td>SD-87587-001</td></tr> </table>
mm	INCH																																		
4 PLACES ± .005	± .005																																		
3 PLACES ± .005	± .005																																		
2 PLACES ± 0.25	± .005																																		
1 PLACE ± .005	± .005																																		
ANGULAR ± 5°																																			
DRAWN BY	DATE																																		
LPLIM	1999/03/19																																		
CHECKED BY	DATE																																		
XCLING	1999/06/14																																		
APPROVED BY	DATE																																		
SKTOH	1999/06/15																																		
TITLE																																			
DIMM, 1.27MM PITCH 168 CKTS, MULTI-KEY 25 DEG																																			
DOCUMENT NO.																																			
SD-87587-001																																			
DRAFT WHERE APPLICABLE MUST REMAIN WITHIN DIMENSIONS				SEE TABLE	<table border="1"> <tr><th>SHEET NO.</th></tr> <tr><td>1 OF 4</td></tr> </table>			SHEET NO.	1 OF 4																										
SHEET NO.																																			
1 OF 4																																			

9 8 7 6 5 4 3 2 1

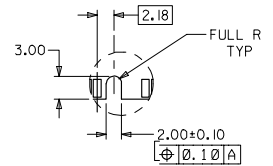


RECOMMENDED MODULE LAYOUT  
(PER JEDEC STANDARD MO-161, 168 CKT, 3.3V)

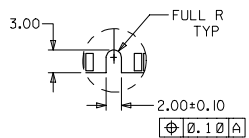


RECOMMENDED  
P.C. BOARD HOLE PATTERN  
(CONNECTOR SIDE)

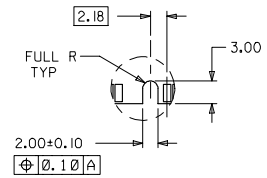
FUNCTION KEY AREA OPTIONS  
(REFER ALSO TO TABLE ON SHT. 3)



OFFSET LEFT KEY



CENTERED KEY



OFFSET RIGHT KEY

OBS: TIN/LEAD P/N EC NO. S2006-0734 DRAWING: CHIKO-HO CHKD: HHO APPR: GLEE 2006/02/27 2006/02/28 2006/03/01	QUALITY SYMBOLS $\nabla=0$ $\nabla=0$	GENERAL TOLERANCES (UNLESS SPECIFIED)	DIMENSION STYLE		SCALE	DESIGN UNITS	THIRD ANGLE PROJECTION
			MM ONLY	NTS	METRIC		
			DRAWN BY: LPLIM	DATE: 1999/03/19	TITLE: DIMM, 1.27MM PITCH 168 CKTS, MULTI-KEY 25 DEG		
			CHECKED BY: XCLING	DATE: 1999/06/14	MOLEX INCORPORATED		
			APPROVED BY: SKTOH	DATE: 1999/06/15	DOCUMENT NO. SD-87587-001		
			MATERIAL NO.		SHEET NO. 2 OF 4		
		DRAFT WHERE APPLICABLE MUST REMAIN WITHIN DIMENSIONS	SEE TABLE		THIS DRAWING CONTAINS INFORMATION THAT IS PROPRIETARY TO MOLEX INCORPORATED AND SHOULD NOT BE USED WITHOUT WRITTEN PERMISSION		

10 9 8 7 6 5 4 3 2 1

F

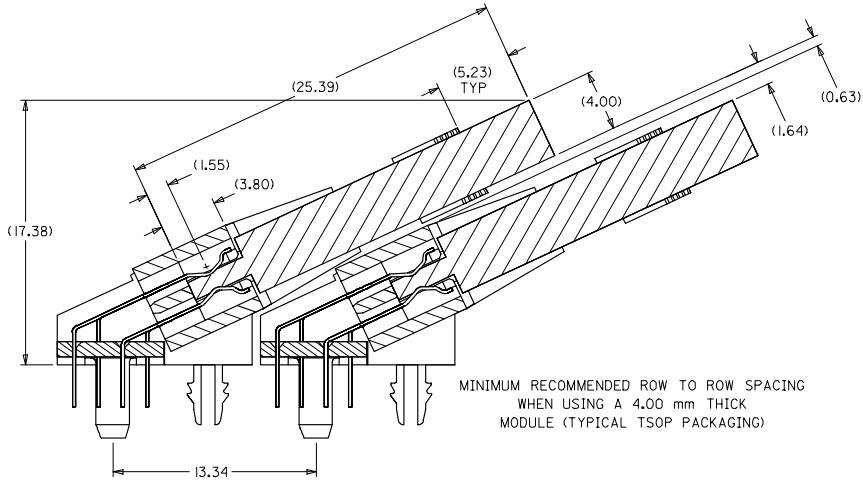
E

D

C

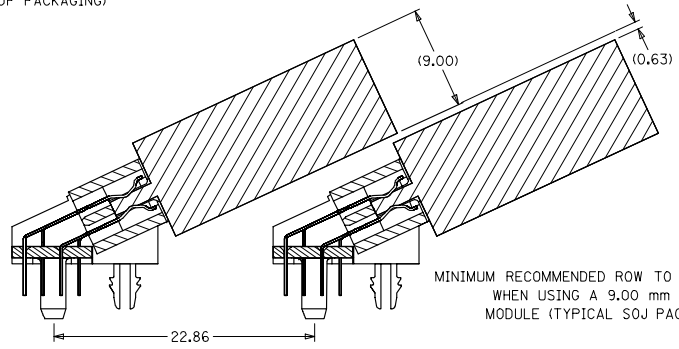
B

A



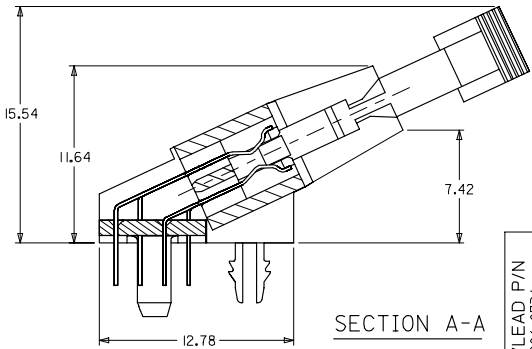
MINIMUM RECOMMENDED ROW TO ROW SPACING  
WHEN USING A 4.00 mm THICK  
MODULE (TYPICAL TSOP PACKAGING)

13.34



MINIMUM RECOMMENDED ROW TO ROW SPACING  
WHEN USING A 9.00 mm THICK  
MODULE (TYPICAL SOJ PACKAGING)

22.86



SECTION A-A

OBS: TIN/LEAD P/N EC NO: S2006-0734 DRAWING NO: 2006/02/27 CHKD: HHO APPR: GLEE 2006/03/01	QUALITY SYMBOLS ▽=0 ▽=0	GENERAL TOLERANCES (UNLESS SPECIFIED)		DIMENSION STYLE MM ONLY		SCALE NTS	DESIGN UNITS METRIC	THIRD ANGLE PROJECTION
		4 PLACES ± --- ± ---	3 PLACES ± --- ± ---	2 PLACES ± 0.25 ± ---	1 PLACE ± --- ± ---	ANGULAR ± 5 °	DRAWN BY LPLIM	DATE 1999/03/19
DRAFT WHERE APPLICABLE MUST REMAIN WITHIN DIMENSIONS		SEE TABLE		MATERIAL NO.		DOCUMENT NO. SD-87587-001		SHEET NO. 3 OF 4
REV D		SIZE A3		THIS DRAWING CONTAINS INFORMATION THAT IS PROPRIETARY TO MOLEX INCORPORATED AND SHOULD NOT BE USED WITHOUT WRITTEN PERMISSION				

9 8 7 6 5 4 3 2 1

F

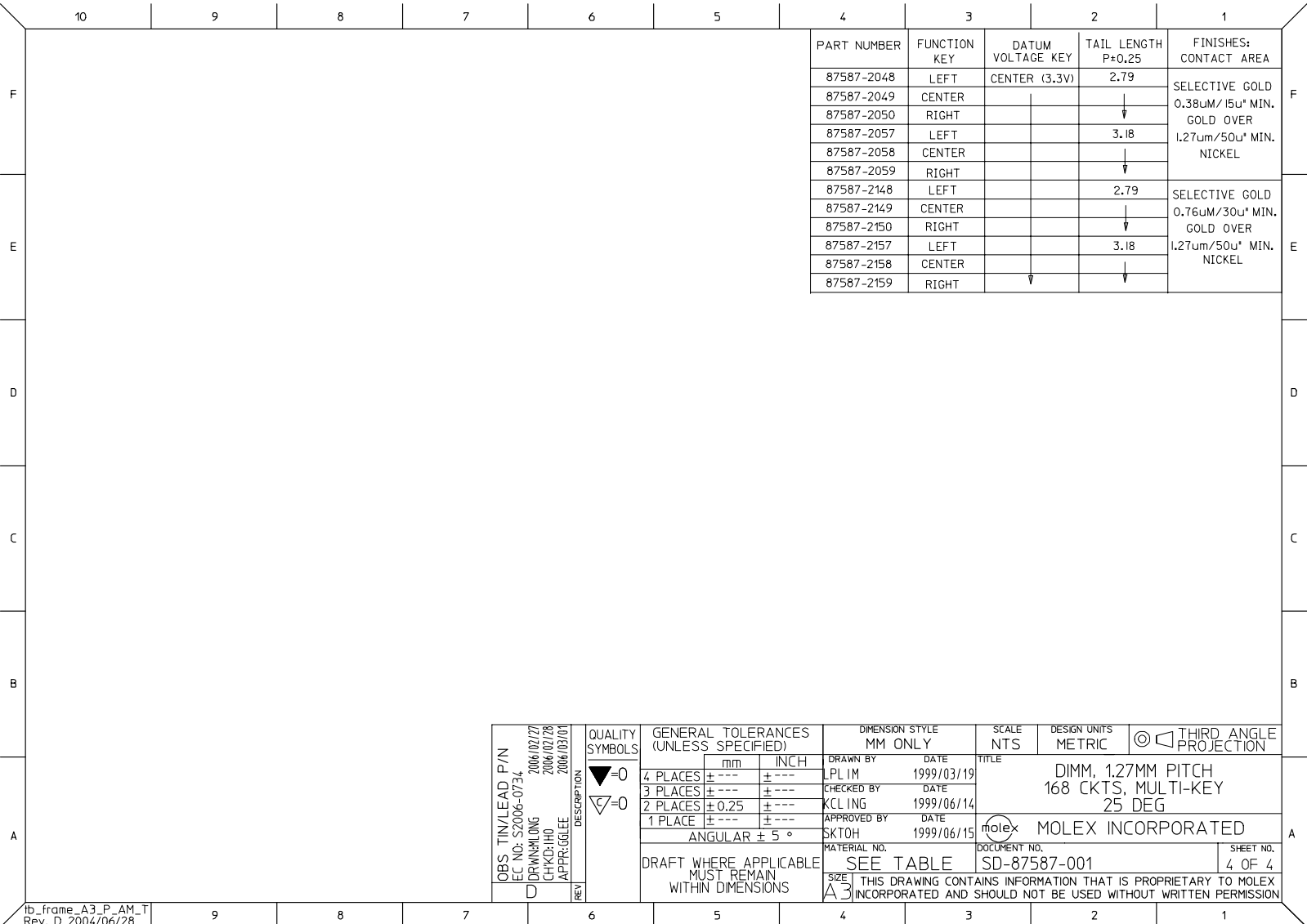
E

D

C

B

A



PART NUMBER	FUNCTION KEY	DATUM VOLTAGE KEY	TAIL LENGTH P±0.25	FINISHES: CONTACT AREA
87587-2048	LEFT	CENTER (3.3V)	2.79	SELECTIVE GOLD 0.38µm/15u* MIN. GOLD OVER 1.27µm/50u* MIN. NICKEL
87587-2049	CENTER			
87587-2050	RIGHT			
87587-2057	LEFT		3.18	
87587-2058	CENTER			SELECTIVE GOLD 0.76µm/30u* MIN. GOLD OVER 1.27µm/50u* MIN. NICKEL
87587-2059	RIGHT			
87587-2148	LEFT		2.79	
87587-2149	CENTER			
87587-2150	RIGHT			
87587-2157	LEFT		3.18	
87587-2158	CENTER			
87587-2159	RIGHT			

OBS. TIN/LEAD P/N EC NO. S2006-0734 DRAWN BY: DRWNLONG CHKD: JHO APPR: GLEE	2006/02/27 2006/02/28 2006/03/01	QUALITY SYMBOLS ▽=0 ▽=0	GENERAL TOLERANCES (UNLESS SPECIFIED)		DIMENSION STYLE MM ONLY		SCALE NTS	DESIGN UNITS METRIC	THIRD ANGLE PROJECTION	
			mm	INCH	DRAWN BY LPLIM	DATE 1999/03/19	TITLE DIMM, 1.27MM PITCH 168 CKTS, MULTI-KEY 25 DEG			
			4 PLACES ± ---	± ---	CHECKED BY KCLING	DATE 1999/06/14	MOLEX INCORPORATED			
			3 PLACES ± ---	± ---	APPROVED BY SKTOH	DATE 1999/06/15				
2 PLACES ± 0.25	± ---	ANGULAR ± 5 °		MATERIAL NO.	DOCUMENT NO.	SHEET NO.				
1 PLACE ± ---	± ---	DRAFT WHERE APPLICABLE MUST REMAIN WITHIN DIMENSIONS		SEE TABLE	SD-87587-001	4 OF 4				
				THIS DRAWING CONTAINS INFORMATION THAT IS PROPRIETARY TO MOLEX INCORPORATED AND SHOULD NOT BE USED WITHOUT WRITTEN PERMISSION						

fb\_frame\_A3\_P\_AM\_T  
Rev. D 2004/06/28