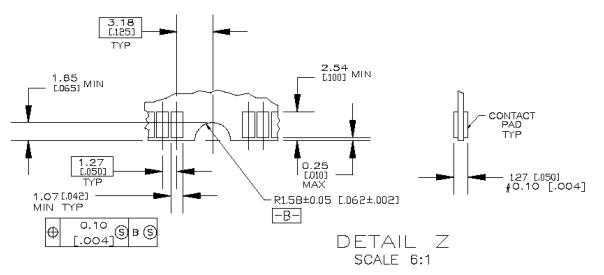
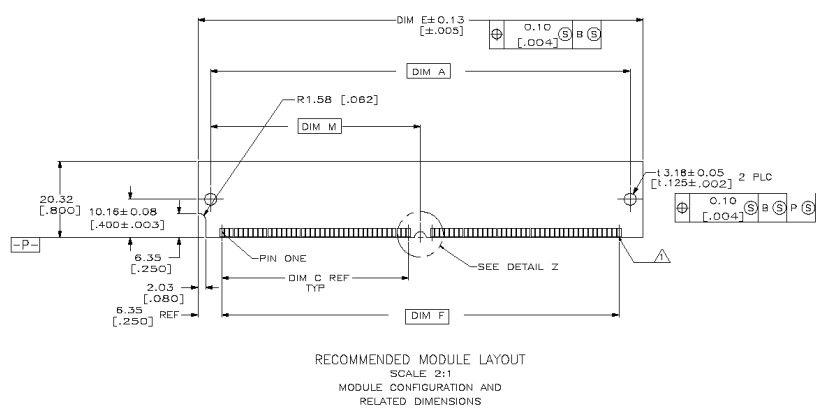


△ FOR OPTIMUM PERFORMANCE, CONTACT PAD PLATING SHOULD BE SMOOTH AND FLAT. COPPER CONTACT PADS ARE TO BE OVERPLATED WITH .00127[.000050] MIN THK NICKEL FOLLOWED WITH .00254[.000100] MIN THK TIN PLATING.

△ 0.00381 [.000150] MIN. THK TIN OVER 0.00127 [.000050] MIN. THK NICKEL OVER ENTIRE CONTACT.



50.60 [1.992]	111.78 [4.400]	95.25 [3.750]	107.95 [4.250]	55.88 [2.200]	44.45 [1.750]	115.57 [4.550]	101.10 [3.984]	72	7-3382482-2
DIM M	DIM J	DIM F	DIM E	DIM D	DIM C	DIM B	DIM A	POSN	PART NO.

THIS DRAWING IS A CONTROLLED DOCUMENT.		REVISIONS		DATE		BY		APP'D	
REV	DATE	DESCRIPTION	DATE	BY	APP'D				
1		INITIAL RELEASE							
2		REVISED TO ADD DIMENSIONS							
3		REVISED TO ADD DIMENSIONS							
4		REVISED TO ADD DIMENSIONS							
5		REVISED TO ADD DIMENSIONS							
6		REVISED TO ADD DIMENSIONS							
7		REVISED TO ADD DIMENSIONS							
8		REVISED TO ADD DIMENSIONS							
9		REVISED TO ADD DIMENSIONS							
10		REVISED TO ADD DIMENSIONS							
11		REVISED TO ADD DIMENSIONS							
12		REVISED TO ADD DIMENSIONS							
13		REVISED TO ADD DIMENSIONS							
14		REVISED TO ADD DIMENSIONS							
15		REVISED TO ADD DIMENSIONS							
16		REVISED TO ADD DIMENSIONS							
17		REVISED TO ADD DIMENSIONS							
18		REVISED TO ADD DIMENSIONS							
19		REVISED TO ADD DIMENSIONS							
20		REVISED TO ADD DIMENSIONS							
21		REVISED TO ADD DIMENSIONS							
22		REVISED TO ADD DIMENSIONS							
23		REVISED TO ADD DIMENSIONS							
24		REVISED TO ADD DIMENSIONS							
25		REVISED TO ADD DIMENSIONS							
26		REVISED TO ADD DIMENSIONS							
27		REVISED TO ADD DIMENSIONS							
28		REVISED TO ADD DIMENSIONS							
29		REVISED TO ADD DIMENSIONS							
30		REVISED TO ADD DIMENSIONS							
31		REVISED TO ADD DIMENSIONS							
32		REVISED TO ADD DIMENSIONS							
33		REVISED TO ADD DIMENSIONS							
34		REVISED TO ADD DIMENSIONS							
35		REVISED TO ADD DIMENSIONS							
36		REVISED TO ADD DIMENSIONS							
37		REVISED TO ADD DIMENSIONS							
38		REVISED TO ADD DIMENSIONS							
39		REVISED TO ADD DIMENSIONS							
40		REVISED TO ADD DIMENSIONS							
41		REVISED TO ADD DIMENSIONS							
42		REVISED TO ADD DIMENSIONS							
43		REVISED TO ADD DIMENSIONS							
44		REVISED TO ADD DIMENSIONS							
45		REVISED TO ADD DIMENSIONS							
46		REVISED TO ADD DIMENSIONS							
47		REVISED TO ADD DIMENSIONS							
48		REVISED TO ADD DIMENSIONS							
49		REVISED TO ADD DIMENSIONS							
50		REVISED TO ADD DIMENSIONS							
51		REVISED TO ADD DIMENSIONS							
52		REVISED TO ADD DIMENSIONS							
53		REVISED TO ADD DIMENSIONS							
54		REVISED TO ADD DIMENSIONS							
55		REVISED TO ADD DIMENSIONS							
56		REVISED TO ADD DIMENSIONS							
57		REVISED TO ADD DIMENSIONS							
58		REVISED TO ADD DIMENSIONS							
59		REVISED TO ADD DIMENSIONS							
60		REVISED TO ADD DIMENSIONS							
61		REVISED TO ADD DIMENSIONS							
62		REVISED TO ADD DIMENSIONS							
63		REVISED TO ADD DIMENSIONS							
64		REVISED TO ADD DIMENSIONS							
65		REVISED TO ADD DIMENSIONS							
66		REVISED TO ADD DIMENSIONS							
67		REVISED TO ADD DIMENSIONS							
68		REVISED TO ADD DIMENSIONS							
69		REVISED TO ADD DIMENSIONS							
70		REVISED TO ADD DIMENSIONS							
71		REVISED TO ADD DIMENSIONS							
72		REVISED TO ADD DIMENSIONS							
73		REVISED TO ADD DIMENSIONS							
74		REVISED TO ADD DIMENSIONS							
75		REVISED TO ADD DIMENSIONS							
76		REVISED TO ADD DIMENSIONS							
77		REVISED TO ADD DIMENSIONS							
78		REVISED TO ADD DIMENSIONS							
79		REVISED TO ADD DIMENSIONS							
80		REVISED TO ADD DIMENSIONS							
81		REVISED TO ADD DIMENSIONS							
82		REVISED TO ADD DIMENSIONS							
83		REVISED TO ADD DIMENSIONS							
84		REVISED TO ADD DIMENSIONS							
85		REVISED TO ADD DIMENSIONS							
86		REVISED TO ADD DIMENSIONS							
87		REVISED TO ADD DIMENSIONS							
88		REVISED TO ADD DIMENSIONS							
89		REVISED TO ADD DIMENSIONS							
90		REVISED TO ADD DIMENSIONS							
91		REVISED TO ADD DIMENSIONS							
92		REVISED TO ADD DIMENSIONS							
93		REVISED TO ADD DIMENSIONS							
94		REVISED TO ADD DIMENSIONS							
95		REVISED TO ADD DIMENSIONS							
96		REVISED TO ADD DIMENSIONS							
97		REVISED TO ADD DIMENSIONS							
98		REVISED TO ADD DIMENSIONS							
99		REVISED TO ADD DIMENSIONS							
100		REVISED TO ADD DIMENSIONS							