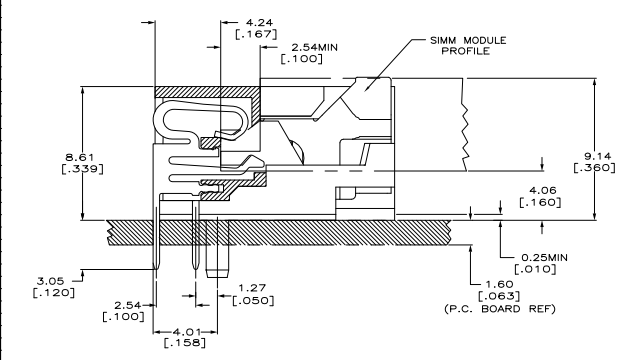
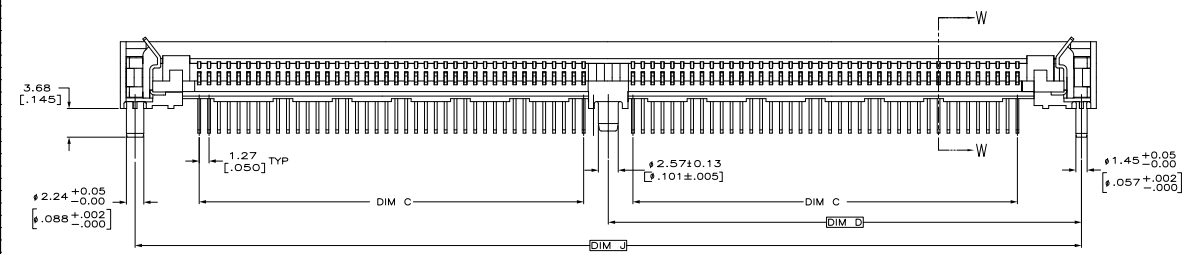
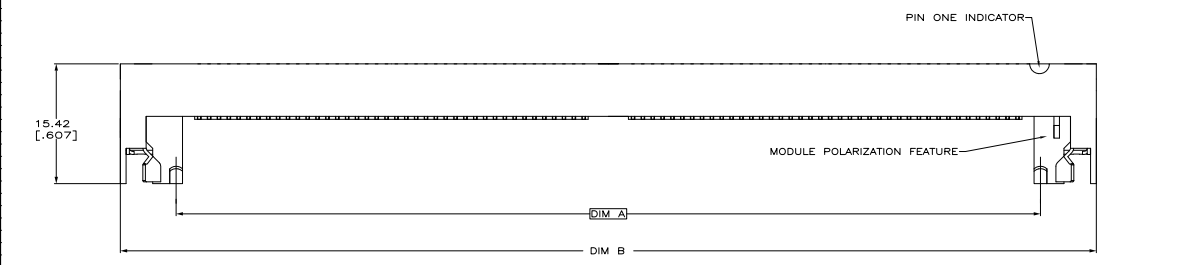
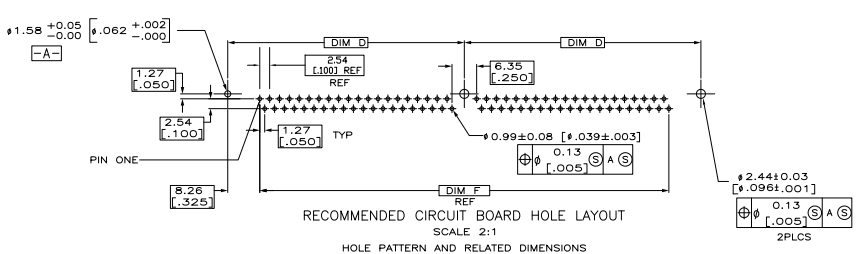


THIS DRAWING IS UNPUBLISHED  
 ALL RIGHTS RESERVED

REV	DATE	DESCRIPTION	BY	CHK	APP
00					
01		REVISED PER ECO-11-004835	11MMR11	RK	HMR

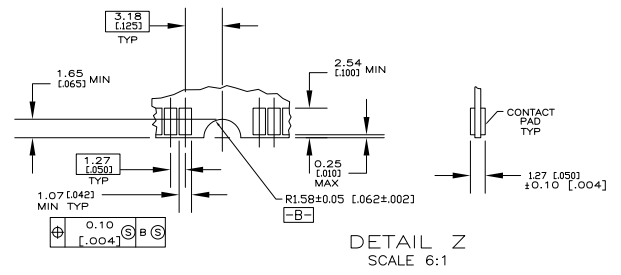
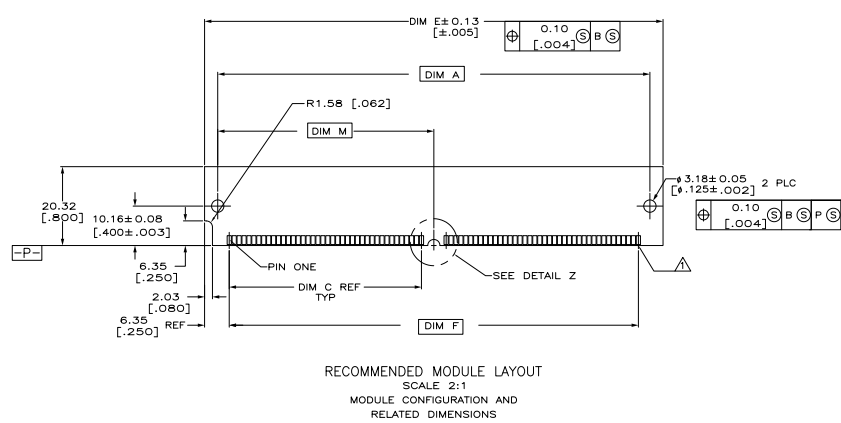


THIS DRAWING IS A CONTROLLED DOCUMENT.		BY: BILLMAN, DAVID	DATE: 11/11/00	TE Connectivity
DRAWN BY: MILLER, JIM		DATE: 11/11/00	SIMM 8 RTANG 1.27[.050]	
CHECKED BY: MILLER, JIM		DATE: 11/11/00	1.27 [.050] CL ASSY	
DESIGNED BY: MILLER, JIM		DATE: 11/11/00	4.064 [163] HEIGHT	
MATERIAL: 1.27 [.050] CL ASSY		DATE: 11/11/00	SIZE: A1	REVISED TO: H1
ISSUED BY: MILLER, JIM		DATE: 11/11/00	ISSUE NO: 1	REVISED TO: H1
ISSUED BY: MILLER, JIM		DATE: 11/11/00	ISSUE NO: 2	REVISED TO: H1
ISSUED BY: MILLER, JIM		DATE: 11/11/00	ISSUE NO: 3	REVISED TO: H1
ISSUED BY: MILLER, JIM		DATE: 11/11/00	ISSUE NO: 4	REVISED TO: H1
ISSUED BY: MILLER, JIM		DATE: 11/11/00	ISSUE NO: 5	REVISED TO: H1
ISSUED BY: MILLER, JIM		DATE: 11/11/00	ISSUE NO: 6	REVISED TO: H1
ISSUED BY: MILLER, JIM		DATE: 11/11/00	ISSUE NO: 7	REVISED TO: H1
ISSUED BY: MILLER, JIM		DATE: 11/11/00	ISSUE NO: 8	REVISED TO: H1
ISSUED BY: MILLER, JIM		DATE: 11/11/00	ISSUE NO: 9	REVISED TO: H1
ISSUED BY: MILLER, JIM		DATE: 11/11/00	ISSUE NO: 10	REVISED TO: H1
ISSUED BY: MILLER, JIM		DATE: 11/11/00	ISSUE NO: 11	REVISED TO: H1
ISSUED BY: MILLER, JIM		DATE: 11/11/00	ISSUE NO: 12	REVISED TO: H1
ISSUED BY: MILLER, JIM		DATE: 11/11/00	ISSUE NO: 13	REVISED TO: H1
ISSUED BY: MILLER, JIM		DATE: 11/11/00	ISSUE NO: 14	REVISED TO: H1
ISSUED BY: MILLER, JIM		DATE: 11/11/00	ISSUE NO: 15	REVISED TO: H1
ISSUED BY: MILLER, JIM		DATE: 11/11/00	ISSUE NO: 16	REVISED TO: H1
ISSUED BY: MILLER, JIM		DATE: 11/11/00	ISSUE NO: 17	REVISED TO: H1
ISSUED BY: MILLER, JIM		DATE: 11/11/00	ISSUE NO: 18	REVISED TO: H1
ISSUED BY: MILLER, JIM		DATE: 11/11/00	ISSUE NO: 19	REVISED TO: H1
ISSUED BY: MILLER, JIM		DATE: 11/11/00	ISSUE NO: 20	REVISED TO: H1
ISSUED BY: MILLER, JIM		DATE: 11/11/00	ISSUE NO: 21	REVISED TO: H1
ISSUED BY: MILLER, JIM		DATE: 11/11/00	ISSUE NO: 22	REVISED TO: H1
ISSUED BY: MILLER, JIM		DATE: 11/11/00	ISSUE NO: 23	REVISED TO: H1
ISSUED BY: MILLER, JIM		DATE: 11/11/00	ISSUE NO: 24	REVISED TO: H1
ISSUED BY: MILLER, JIM		DATE: 11/11/00	ISSUE NO: 25	REVISED TO: H1
ISSUED BY: MILLER, JIM		DATE: 11/11/00	ISSUE NO: 26	REVISED TO: H1
ISSUED BY: MILLER, JIM		DATE: 11/11/00	ISSUE NO: 27	REVISED TO: H1
ISSUED BY: MILLER, JIM		DATE: 11/11/00	ISSUE NO: 28	REVISED TO: H1
ISSUED BY: MILLER, JIM		DATE: 11/11/00	ISSUE NO: 29	REVISED TO: H1
ISSUED BY: MILLER, JIM		DATE: 11/11/00	ISSUE NO: 30	REVISED TO: H1
ISSUED BY: MILLER, JIM		DATE: 11/11/00	ISSUE NO: 31	REVISED TO: H1
ISSUED BY: MILLER, JIM		DATE: 11/11/00	ISSUE NO: 32	REVISED TO: H1
ISSUED BY: MILLER, JIM		DATE: 11/11/00	ISSUE NO: 33	REVISED TO: H1
ISSUED BY: MILLER, JIM		DATE: 11/11/00	ISSUE NO: 34	REVISED TO: H1
ISSUED BY: MILLER, JIM		DATE: 11/11/00	ISSUE NO: 35	REVISED TO: H1
ISSUED BY: MILLER, JIM		DATE: 11/11/00	ISSUE NO: 36	REVISED TO: H1
ISSUED BY: MILLER, JIM		DATE: 11/11/00	ISSUE NO: 37	REVISED TO: H1
ISSUED BY: MILLER, JIM		DATE: 11/11/00	ISSUE NO: 38	REVISED TO: H1
ISSUED BY: MILLER, JIM		DATE: 11/11/00	ISSUE NO: 39	REVISED TO: H1
ISSUED BY: MILLER, JIM		DATE: 11/11/00	ISSUE NO: 40	REVISED TO: H1
ISSUED BY: MILLER, JIM		DATE: 11/11/00	ISSUE NO: 41	REVISED TO: H1
ISSUED BY: MILLER, JIM		DATE: 11/11/00	ISSUE NO: 42	REVISED TO: H1
ISSUED BY: MILLER, JIM		DATE: 11/11/00	ISSUE NO: 43	REVISED TO: H1
ISSUED BY: MILLER, JIM		DATE: 11/11/00	ISSUE NO: 44	REVISED TO: H1
ISSUED BY: MILLER, JIM		DATE: 11/11/00	ISSUE NO: 45	REVISED TO: H1
ISSUED BY: MILLER, JIM		DATE: 11/11/00	ISSUE NO: 46	REVISED TO: H1
ISSUED BY: MILLER, JIM		DATE: 11/11/00	ISSUE NO: 47	REVISED TO: H1
ISSUED BY: MILLER, JIM		DATE: 11/11/00	ISSUE NO: 48	REVISED TO: H1
ISSUED BY: MILLER, JIM		DATE: 11/11/00	ISSUE NO: 49	REVISED TO: H1
ISSUED BY: MILLER, JIM		DATE: 11/11/00	ISSUE NO: 50	REVISED TO: H1



△ FOR OPTIMUM PERFORMANCE, CONTACT PAD PLATING SHOULD BE SMOOTH AND FLAT. COPPER CONTACT PADS ARE TO BE OVERPLATED WITH .00127[.000050] MIN THK NICKEL FOLLOWED WITH .00254[.000100] MIN THK TIN-LEAD PLATING.

△ 0.00381 [.000150] MIN. THK TIN-LEAD OVER 0.00127 [.000050] MIN. THK NICKEL OVER ENTIRE CONTACT.



OBSOLETE	58.22[2.292]	127.00[5.000]	110.49[4.350]	123.19[4.850]	63.50[2.500]	52.07[2.050]	130.81[5.150]	116.43[4.584]	84	8-382482-4
OBSOLETE	55.68[2.192]	121.92[4.800]	105.41[4.150]	118.11[4.650]	60.96[2.400]	49.53[1.950]	125.73[4.950]	111.35[4.384]	80	8-382482-0
	50.60[1.992]	111.76[4.400]	95.25[3.750]	107.95[4.250]	55.88[2.200]	44.45[1.750]	115.57[4.550]	101.19[3.984]	72	7-382482-2
OBSOLETE	48.06[1.892]	106.68[4.200]	90.17[3.550]	102.87[4.050]	53.34[2.100]	41.91[1.650]	110.49[4.350]	96.11[3.784]	68	6-382482-8
OBSOLETE	30.28[1.192]	71.12[2.800]	54.81[2.150]	67.31[2.650]	35.55[1.400]	24.13[0.950]	74.93[2.950]	60.55[2.384]	40	4-382482-0
	DIM M	DIM J	DIM F	DIM E	DIM D	DIM C	DIM B	DIM A	POSN	PART NO.

THIS DRAWING IS A CONTROLLED DOCUMENT.

DESIGNED BY	J. BILLMAN	DATE	11-18-82
DRAWN BY	J. SMITH	DATE	11-18-82
CHECKED BY	J. MILLER	DATE	11-18-82
APPROVED BY		DATE	

TE Connectivity

1.27 [0.050] CENTERLINE ASSY

SIZE: 4.11 X 1.50 X 0.10

DATE: 11-18-82

REV: A1

Q=382482

CUSTOMER DRAWING

SIZE: 4.11 X 1.50 X 0.10

SHEET: 2 OF 2

REV: H1