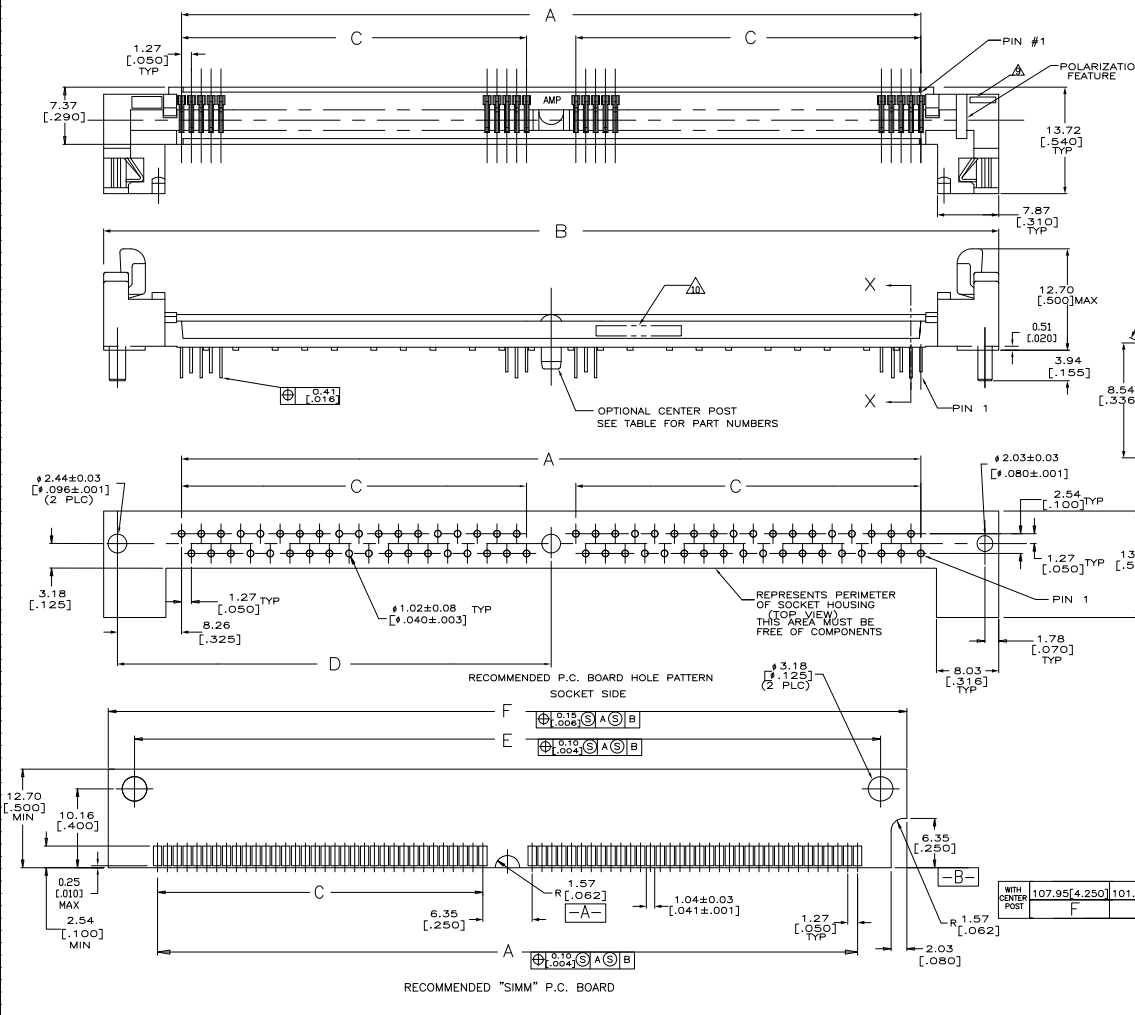
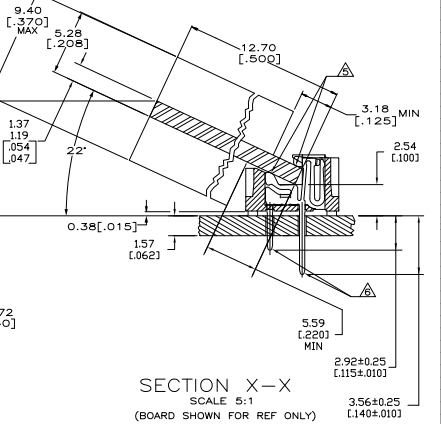


REV	DATE	DESCRIPTION	BY	CHK	APP
AG 00					
B		REVISED PER ECO-06-027841			



- ▲ HOUSING-MATERIAL : LIQUID-CRYSTAL-POLYMER.
- ▲ CONTACT-MATERIAL : PHOS. BRONZE.
- ▲ LATCH-MATERIAL : STAINLESS STEEL.
- ▲ CONTACT-PLATE 0.00127 [.000050] MIN NICKEL ALL OVER.
- ▲ CONTACT-PLATE 0.00076[.000030] MIN. GOLD AT CONTACT PTS.
- ▲ CONTACT SOLDERTAILS-PLATE 0.00508[.000200] MIN MATTE TIN.
- 7.-IN ADDITION TO THOSE RECOMMENDED "SIMM" P.C. BOARD DIMENSIONS AND TOLERANCES SHOWN, ALL JEDEC SPECIFICATIONS APPLY AS SHOWN ON MO-116, ISSUE A.
- 8. RECOMMENDED MATING S.I.M.M. TAB METALLURGY: BASE METAL-COPPER, PLATING TO BE 0.00076[.000030] MIN GOLD OVER 0.00127[.000050] MIN NICKEL.
- ▲ 'S' IDENTIFIER LOCATED APPROXIMATELY AS SHOWN.
- ▲ DATE CODE INFORMATION (YEAR WEEK), LOCATED APPROXIMATELY AS SHOWN ON OPPOSITE SIDE ONLY.



WITH CENTER POST	107.95[4.250]	101.19[3.984]	55.88[2.200]	44.45[1.750]	115.32[4.540]	95.25[3.750]	72	5822097-3
	F	E	D	C	B	A	No. OF POS	PART NO
THIS DRAWING IS A CONTROLLED DOCUMENT								
DESIGNER: [Signature]			CHECKED: [Signature]			DATE: [Date]		
DRAWN: [Signature]			APPROVED: [Signature]			TITLE: CONNECTOR, MICRO-EDGE, .050, LP, GOLD PL, W/METAL LATCH		
MATERIAL: [Material]			QUANTITY: [Quantity]			REVISIONS: [Revision]		
CUSTOMER DRAWING			DRAWING NO: A100779			REV: 1		