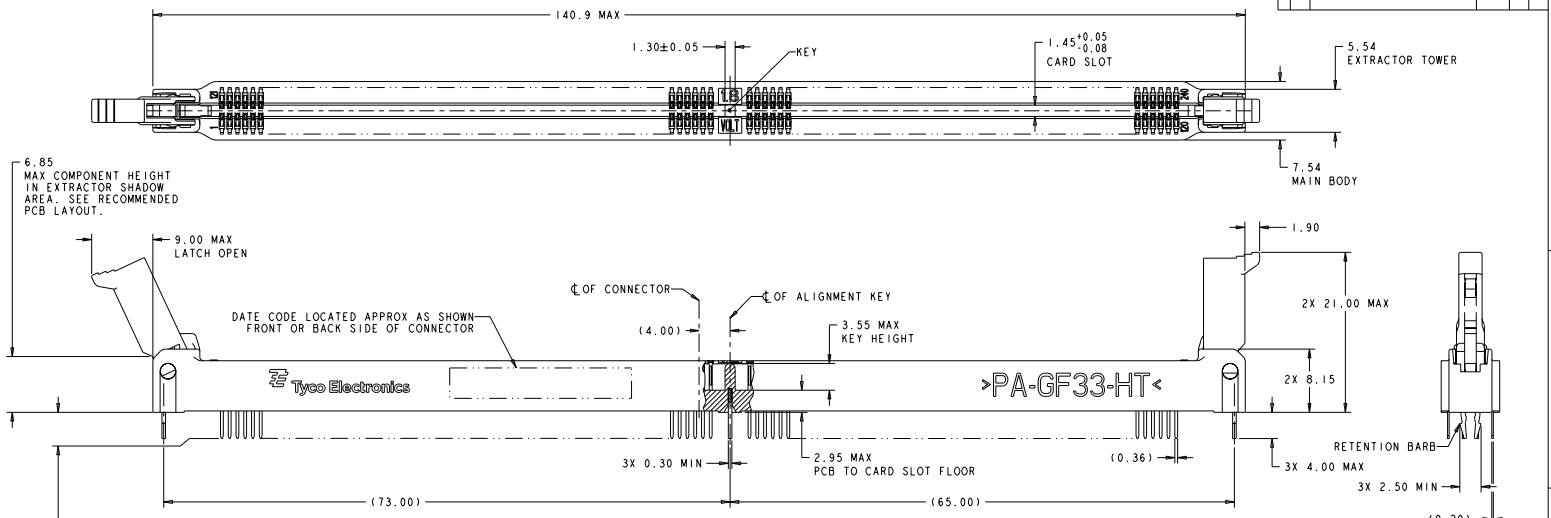
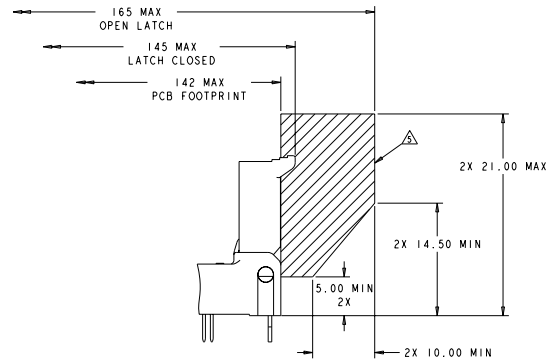


| REV | DATE | DESCRIPTION | BY | CHK | APP |
|-----|---------------|-------------|----|-----|-------|
| 00 | | | | | |
| A1 | ECR-18-018052 | | | | D.S.Y |



- 2.87±0.25 FOR 1.60 (.063") THK PCB
- 3.38±0.25 FOR 2.36 (.093") THK PCB
- 4.20±0.25 FOR 3.18 (.125") THK PCB

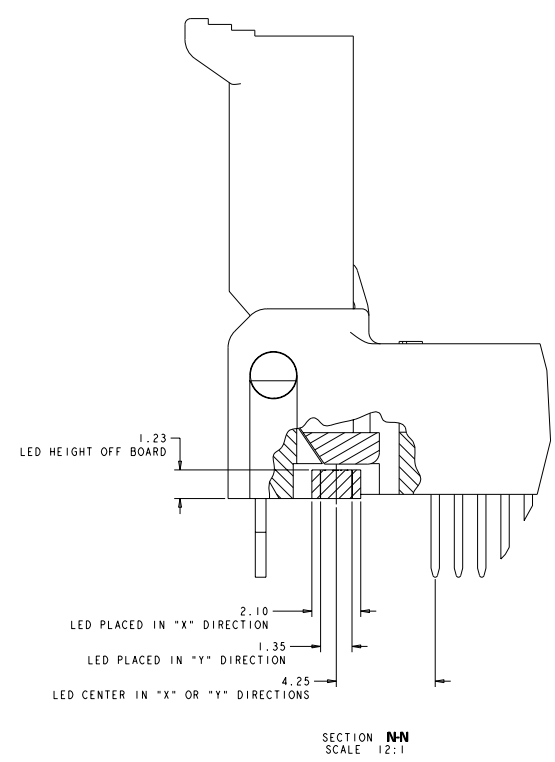
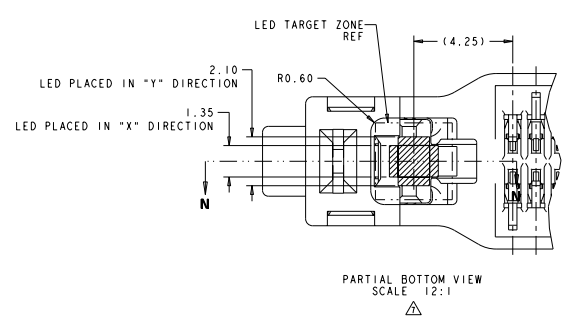


- MATERIALS:**
- HOUSING: HIGH TEMPERATURE NYLON, BLACK, UL94 V-0
 - EXTRACTOR: HIGH TEMPERATURE THERMOPLASTIC
 - CONTACTS: COPPER ALLOY
 - RETENTION BARB: STAINLESS STEEL
- INTERFACE FINISH:**
- (1) 0.00076 MIN THK GOLD OVER 0.00127 MIN THK NICKEL
 - (2) 0.00038 MIN THK GOLD OVER 0.00127 MIN THK NICKEL
 - (3) 0.00008 MIN THK GOLD OVER 0.00127 MIN THK NICKEL
- FINISHED HOLE SIZE:** 0.15 MAXIMUM ANNULAR RING.
- KEEP OUT ZONE.**
- KEEP OUT AREA RESERVED FOR SOCKET EXTRACTORS, BOTH ENDS.**
- SOLDERTAIL FINISH:** 0.00300 MIN THK MATTE TIN OVER 0.00127 MIN THK NICKEL.
- LED LOCATION AS APPLICABLE PER CUSTOMER.**
- DATUM [G-] IS CONNECTOR SIDE SURFACE OF PCB.**
9. COMPLIES WITH JEDEC SPECIFICATION SO-001.
- CENTER HOLE CAN BE EITHER 2.45 BY 1.80 AS SHOWN OR A 2.45 DIAMETER ROUND HOLE.**

| EXTRACTOR COLOR | CONTACT INTERFACE | TAIL LENGTH | PART NUMBER |
|-----------------|-------------------|-------------|-------------|
| NATURAL | 0.00008 MIN | 4.20 | 1888669-9 |
| | | 3.38 | 1888669-8 |
| | | 2.87 | 1888669-7 |
| NATURAL | 0.00038 MIN | 4.20 | 1888669-6 |
| | | 3.38 | 1888669-5 |
| | | 2.87 | 1888669-4 |
| NATURAL | 0.00076 MIN | 4.20 | 1888669-3 |
| | | 3.38 | 1888669-2 |
| | | 2.87 | 1888669-1 |

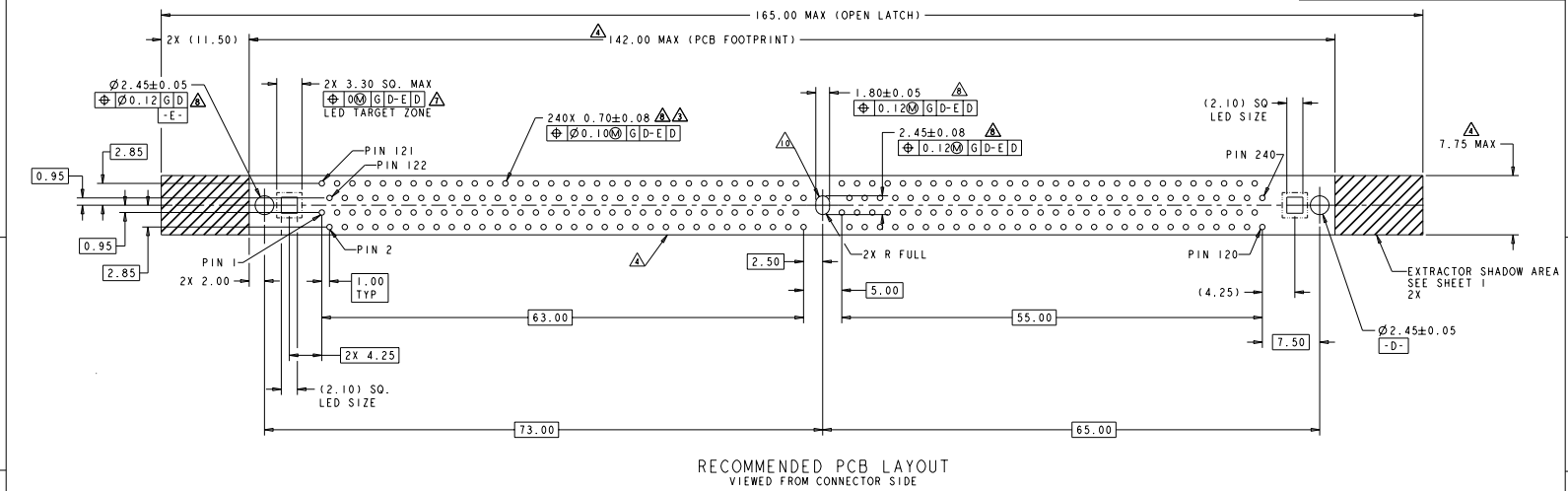
| | | | |
|---|---|---|---|
| REV: 00 DATE: 08/14/2018 BY: TYPHOON ELECTRONICS CORPORATION ALL RIGHTS RESERVED | TYPHOON ELECTRONICS CORPORATION 188-2111 114-13801 00778 ©-1888669 | SOCKET ASSEMBLY, 5002 VLP DIMM, SOLDER TAIL, 240 POSITION | Tyco Electronics Harrisburg, PA 17105-3600 |
|---|---|---|---|

| REV. NO. | | REVISIONS | |
|----------|------|-------------|----|
| NO. | DATE | DESCRIPTION | BY |
| GP | 00 | SEE SHEET 1 | |
| | | | |
| | | | |

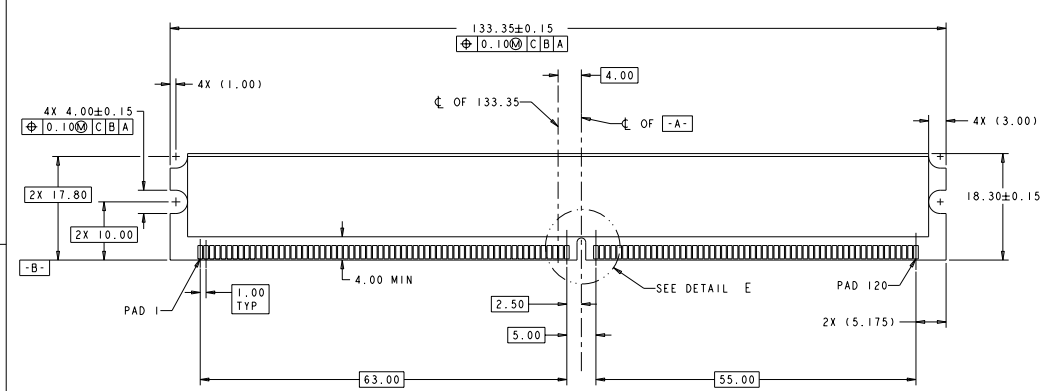


| | | | |
|--|-------------------|--|-----------------------|
| TDK ELECTRONICS CORPORATION 2600 ROUTE 100 HARRISBURG, PA 17105-3600 | | TDK ELECTRONICS HARRISBURG, PA 17105-3600 | |
| DRAWING NO. 00778 | REV. NO. 00 | PART NO. 188-2111 | CUSTOMER DRAWING A |
| DATE 11-6-13 | DRAWN BY 00778 | CHECKED BY 00778 | APPROVED BY 00778 |
| TITLE SOCKET ASSEMBLY, 500K VLP DIMM, SOLDER TAIL, 240 POSITION | | SHEET NO. 2 OF 3 | |

| REV | DATE | DESCRIPTION | BY | CHK | APP |
|-----|------|-------------|----|-----|-----|
| 00 | | SEE SHEET 1 | | | |

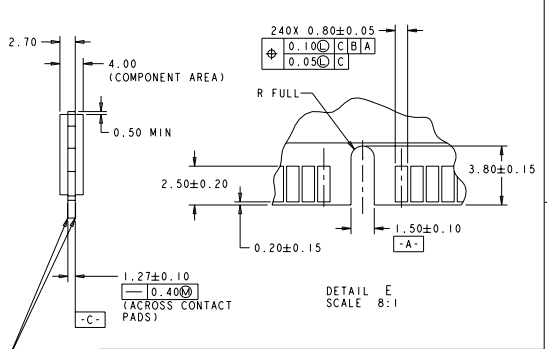


RECOMMENDED PCB LAYOUT
 VIEWED FROM CONNECTOR SIDE



RECOMMENDED MODULE LAYOUT
 SCALE 3:1

NOTE: REFER TO JEDEC MO-237 VARIATIONS DB, EB, FB, GB FOR COMPLETE MODULE DETAILS



DETAIL E
 SCALE 8:1

| | | | | | | | |
|-------------------|--|-----------------|----------------|-----------------|----------------|-----------------|----------------|
| DATE: 11/14/00 | BY: J. HANGLER | APP: J. HANGLER | REV: 001 | DATE: 11/14/00 | BY: J. HANGLER | APP: J. HANGLER | REV: 001 |
| PROJECT: 188-2111 | DESCRIPTION: SOCKET ASSEMBLY, 5002 VLP DIMM, SOLDER TAIL, 240 POSITION | DATE: 11/14/00 | BY: J. HANGLER | APP: J. HANGLER | REV: 001 | DATE: 11/14/00 | BY: J. HANGLER |
| CUSTOMER: 00778 | PROJECT: 1888669 | DATE: 11/14/00 | BY: J. HANGLER | APP: J. HANGLER | REV: 001 | DATE: 11/14/00 | BY: J. HANGLER |