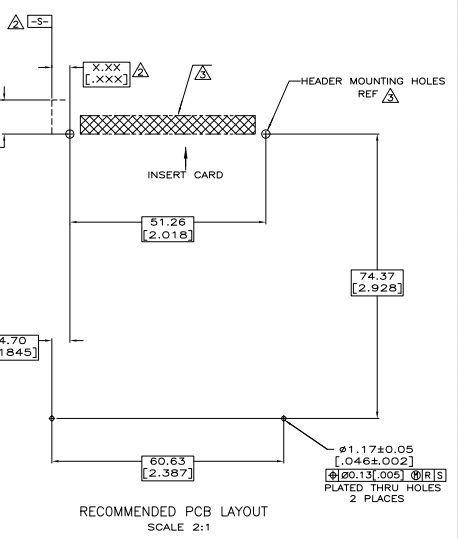


REV	DATE	BY	CHK	DESCRIPTION
00				
01	03-24-05	GA	JG	REL PER EC 0513-001-05

- △ SMT OR THRU-HOLE HEADER ASSY NOT SUPPLIED AND MUST BE ORDERED SEPARATELY. CONTACT TYCO ELECTRONICS FOR HEADER PART NUMBER
- △ DATUMS AND BASIC DIMENSIONS ESTABLISHED BY CUSTOMER FOR HEADER PCB BOARD LAYOUT SEE APPROPRIATE HEADER ASSEMBLY
- △ MATERIAL:  
RAIL: LCP - COLOR: BLACK  
HOLD DOWNS: PHOSPHOR BRONZE



DESCRIPTION	PART NO.
RIGHT GUIDE RAILS WITH HOLDDOWN	5146078-2
LEFT GUIDE RAILS WITH HOLDDOWN	5146078-1

THIS DRAWING IS A CONTROLLED DOCUMENT. SEE ATTACHED DOCUMENT FOR ATTENTION TO CUSTOMER DRAWING.		DATE	BY	CHK
DATE	BY	CHK	DESCRIPTION	REVISION
03-24-05	GA	JG	REL PER EC 0513-001-05	01

**COPYRIGHT 2005  
TYCO ELECTRONICS CORP  
ALL RIGHTS RESERVED**