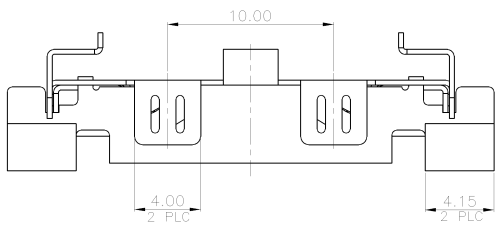
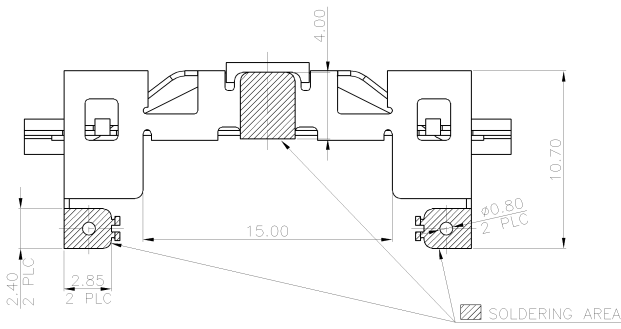
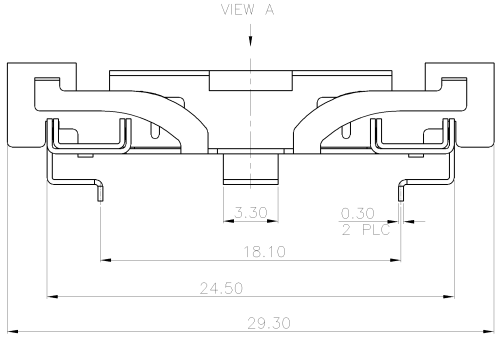


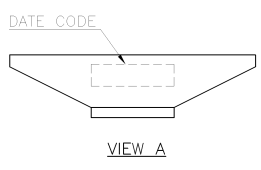
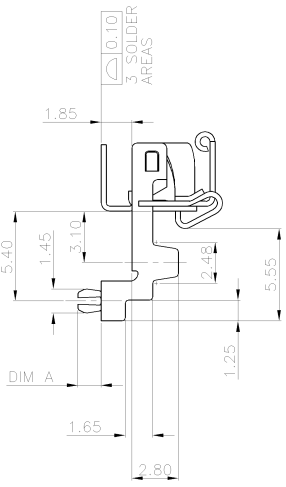
NUMBER C-1775129  
METRIC  
3RD ANGLE PROJECTION

THIS INFORMATION IS CONFIDENTIAL AND IS DECIDED TO YOU ON CONDITION THAT NO FURTHER DISCLOSURE IS MADE BY YOU TO OTHER THAN AMP PERSONNEL WITHOUT DIMENSIONS IN MILLIMETERS. DO NOT SCALE PRINT.



NOTES:

1. MATERIAL: STAINLESS STEEL.
2. FINISH: GOLD FLASH PLATING ON SOLDERING AREA, 1.27 $\mu$ m [50 $\mu$ "] MIN. NICKEL UNDERPLATED ALL OVER.
3. CONNECTOR PART NUMBERS: (SEE DRAWING# 1775128)
4. FOR MINI PCI EXPRESS 6.7 HEIGHT.
5. REFLOW SOLDER CAPABLE TO 260°C AS PER TYCO SPEC. 109-201, CONDITION B.



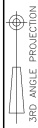
1.00	1775129-2
1.40	1775129-1
DIM A	PART NUMBER

A	REVISED	ECR-06-017125	AW	SH	14JUL 2006
O	FIRST RELEASED	--	AW	SH	03AUG 2005
LTR	REVISION RECORD	ECN	DWN	CHK	DATE

TOLERANCES UNLESS OTHERWISE SPECIFIED:	DWN	A. WU	<b>tyco</b> Electronics NAME TYCO HOLDINGS (BERMUDA) VII LTD. TAIWAN BRANCH
0 PLC ±	17-JUL-2006	S. HOU	
1 PLC ±0.25		17-JUL-2006	LATCH ASSEMBLY, MINI PCI EXPRESS, 52 POS.
2 PLC ±0.2			
3 PLC ±0.15			
ANGLES ±3°			
MATERIAL	APVD	W.J. KE	LOC SIZE DRAWING NO DW A <sub>3</sub> C-1775129 REV SCALE SHEET 1 OF 3
SEE NOTE	PRODUCT SPEC	17-JUL-2006	
FINISH	QUALIFICATION TEST REPORT		
SEE NOTE	WEIGHT	1.1 GRAMS	

CUSTOMER DRAWING

NUMBER  
C-1775129

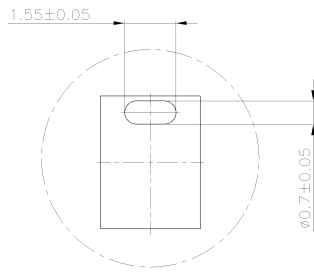
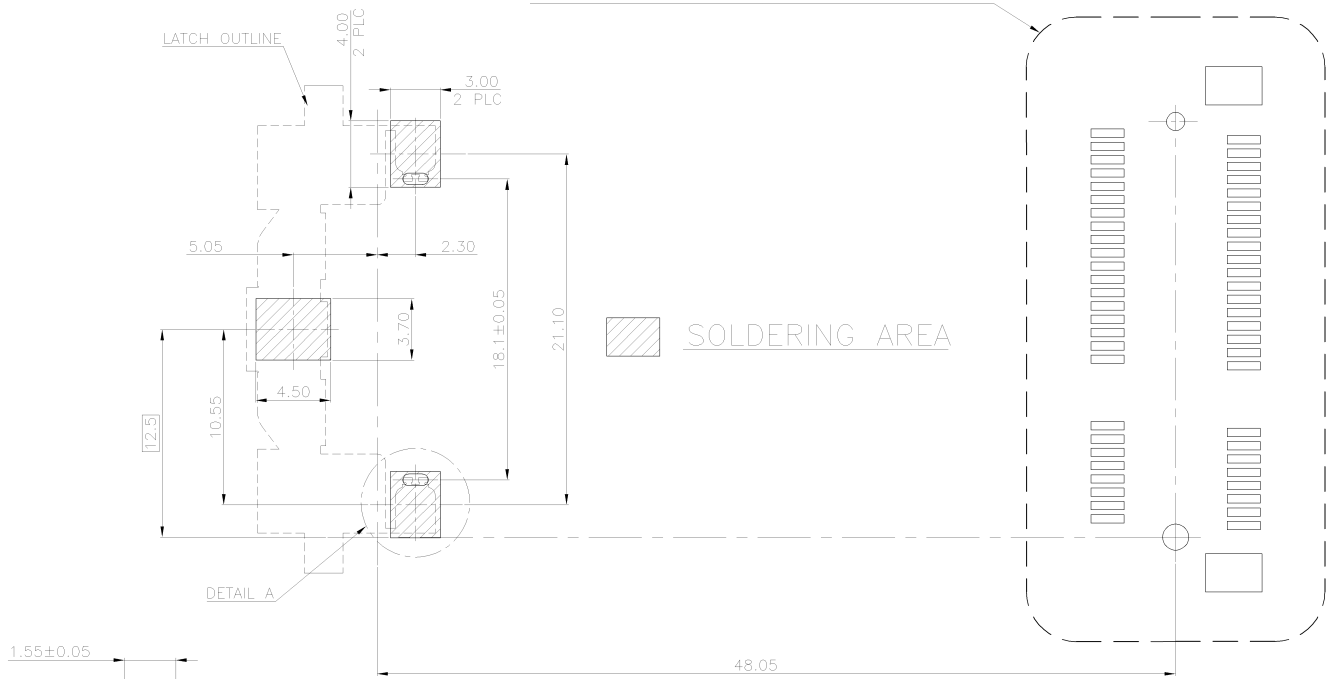


METRIC

THIS INFORMATION IS CONFIDENTIAL AND IS DECLASSIFIED TO YOU ON CONDITION THAT NO FURTHER DISCLOSURE IS MADE BY YOU TO OTHER THAN AMP PERSONNEL WITHOUT DIMENSIONS IN MILLIMETERS. DO NOT SCALE PRINT.

PRINT DIST  
DW

SEE DRAWING# 1775128 FOR DIMENSIONS



DETAIL A  
SCALE 2:1

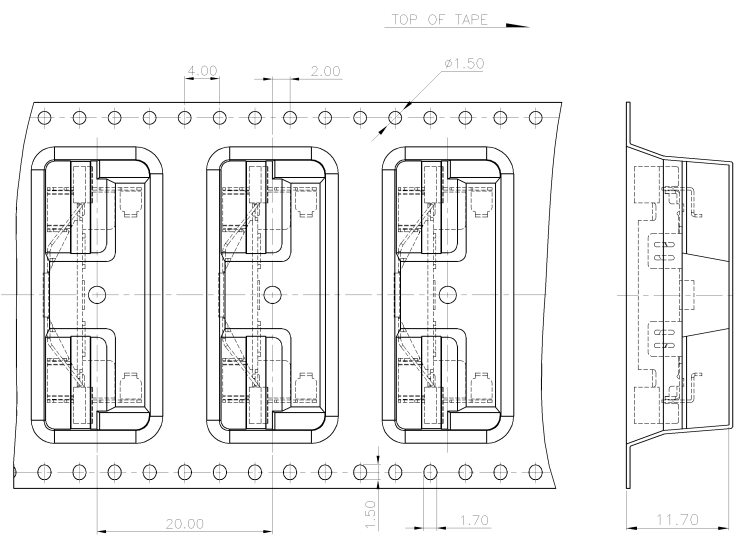
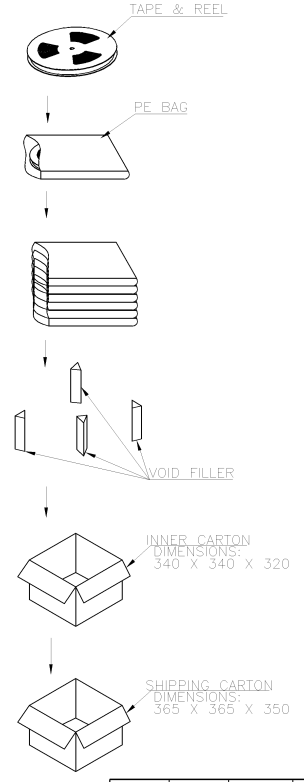
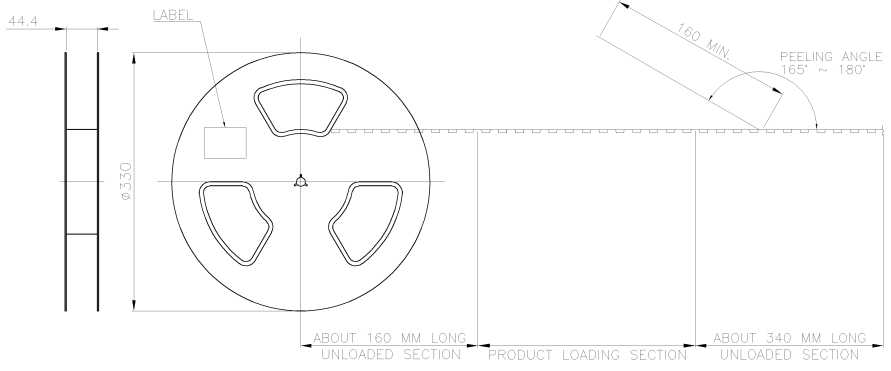
RECOMMENDED LATCH PCB LAYOUT  
TOLERANCE: ±0.05, THICKNESS: 1.0mm

SEE SHEET 1	ECN	DWN/CHK	DATE
LTR	REVISION RECORD		

TOLERANCES UNLESS OTHERWISE SPECIFIED: 0 PLC ± 1 PLC ± 2 PLC ± 3 PLC ± ANGLES ±	DWN A. WU 17-JUL-2006 CHK S. HOU 17-JUL-2006	<b>tyco</b> Electronics TYCO HOLDINGS (BERMUDA) VII LTD. TAIWAN BRANCH
MATERIAL -	APVD W.J. KE 17-JUL-2006	LATCH ASSEMBLY, MINI PCI EXPRESS, 52 POS.
FINISH -	APPLICATION SPEC -	LOC DW
WEIGHT -	SCALE -	SIZE A <sub>3</sub>
		DRAWING NO C-1775129
		REV A
		SHEET 2 OF 3

CUSTOMER DRAWING

NUMBER C-1775129  
METRIC  
3RD ANGLE PROJECTION



THIS INFORMATION IS CONFIDENTIAL AND IS DECIDED TO YOU ON CONDITION THAT NO FURTHER DISCLOSURE IS MADE BY YOU TO OTHER THAN AMP PERSONNEL WITHOUT DIMENSIONS IN MILLIMETERS. DO NOT SCALE PRINT.

SEE SHEET 1	ECN	DWN/CHK	DATE
LTR	REVISION RECORD		

TOLERANCES UNLESS OTHERWISE SPECIFIED:	DWN	A. WU	TYCO HOLDINGS (BERMUDA)
0 PLC ±0.1	CHK	17-JUL-2006	VII LTD. TAIWAN BRANCH
1 PLC ±0.1		S. HOU	NAME
2 PLC ±0.1		17-JUL-2006	
3 PLC ±0.1			
ANGLES ±0.5			
MATERIAL	APVD	W.J. KE	LATCH ASSEMBLY, MINI PCI EXPRESS, 52 POS.
SEE NOTE		17-JUL-2006	
FINISH	APPLICATION SPEC		LOC SIZE DRAWING NO
SEE NOTE			DW A <sub>3</sub> C-1775129
	WEIGHT		SCALE SHEET
			-- 3 OF 3

CUSTOMER DRAWING