

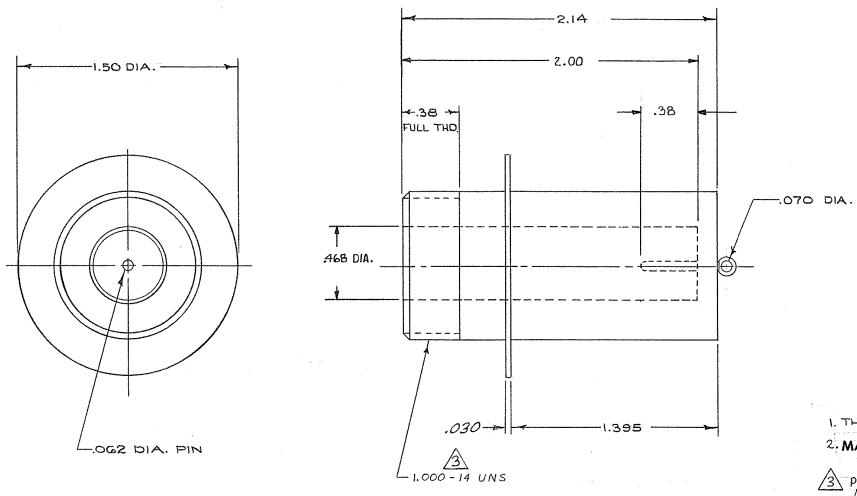
DRAWING MADE IN THIRD ANGLE PROJECTION

© COPYRIGHT 1973 BY AMP INCORPORATED, HARRISBURG, PA. ALL INTERNATIONAL RIGHTS RESERVED. AMP INCORPORATED PRODUCTS COVERED BY U.S. AND FOREIGN PATENTS AND/OR PATENTS PENDING.

Unauthorized copy not to be made without proper permission.

LOC DIST L 37

REVISIONS						
P	F	ZONE	LTR	DESCRIPTION	DATE	APPROVED
			A	ADDED .468 DIA., .38, 2.00, FCN 8094, DS	5-19-75	<i>[Signature]</i>
			B	REMOVED -2 WAS GOLD PLATED, DS	5-19-75	<i>[Signature]</i>
			C	REV PER ECN S-3960	4-10-87	<i>[Signature]</i>
			D	REVISED PER 0114-0192-05	1-06	<i>[Signature]</i>



- 1. THIS RECEPTACLE IS HERMETICALLY SEALED
- 2. MARK PER AMP SPEC. 118-36.000 (WHITE INK)
- △ PER FEDERAL STANDARD H-28 3 WIRE METHOD. DIMENSION OVER WIRES TO BE .9975-1.0186.

AS SHOWN WITH TIN PLATED PIN & FLANGE		5-861258-1
AS SHOWN WITH TIN-LEAD PLATED PIN & FLANGE		861258-1
PART NO		
UNLESS OTHERWISE SPECIFIED DIMENSIONS ARE IN INCHES. TOLERANCES: .00 ± .01 .000 ± .005 ANGLES ±		CONTRACT NO
MATERIAL MOLDED GLASS EPOXY		DR <i>[Signature]</i> 7/26/73 CHK
FINISH BLACK		APPD <i>[Signature]</i> 7-31-73 APPD
NEXT ASSY		DSGN APPD
FINAL ASSY		OTHER APPD
NEXT ASSY USED ON		SIZE CODE IDENT NO NUMBER
QTY REQD APPLICATION		C 89110 861258
		SCALE 2:1 WT SHEET 1 OF 1

CUSTOMER DRAWING