

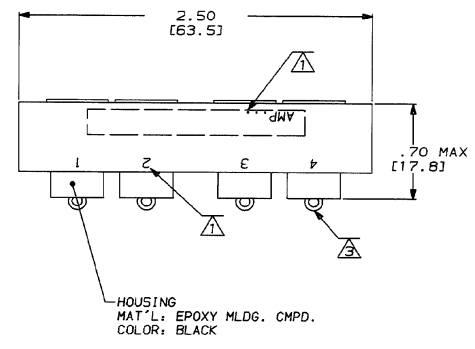
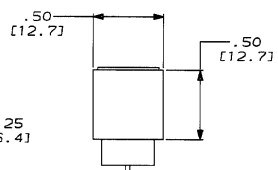
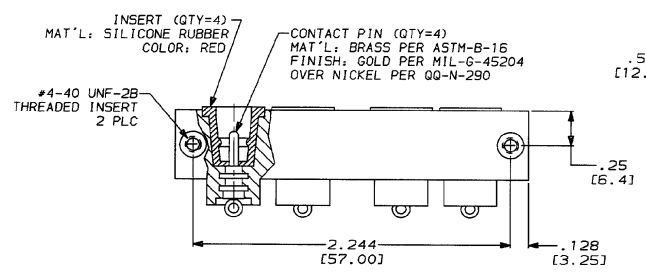
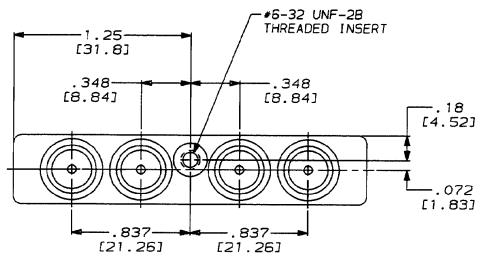
4 3 2 1

DRAWING MADE IN THIRD ANGLE PROJECTION

THIS DRAWING IS UNPUBLISHED. RELEASED FOR PUBLICATION .19

© COPYRIGHT 19 BY AMP INCORPORATED. ALL INTERNATIONAL RIGHTS RESERVED.

PROJ LOC		DIST		REVISIONS					
CODE				ZONE	LTR	DESCRIPTION	DATE	APPD	
4087	DF	SO		B		REV & REDRAWN PER DF-5893	CT	11-92	SG



- △ MARKED PER MIL-STD-130.
- 2. REQUIREMENTS: 31 KVDC AT SEA LEVEL FOR 2 MIN. IR: 5000 MEGOHMS MIN.
- △ PIN CONTACT EYELETS ARE PRE-TINNED PER MIL-T-10727.

THIS DRAWING IS A CONTROLLED DOCUMENT FOR AMP INCORPORATED. IT IS SUBJECT TO CHANGE AND THE CONTROLLING ENGINEERING ORGANIZATION SHOULD BE CONTACTED FOR THE LATEST REVISION.

DO NOT SCALE PRINT. UNLESS SPECIFIED DIMENSIONS IN INCHES [mm] TOLERANCES ON + 2 PLC DEC ± .02 [0.5] 3 PLC DEC ± .010 [0.25] ANGLES ± -	DR 11-5-92 C.C. THOMAS CHK 11-9-92 S. GLATFELTER APPD 11-9-92 S. GLATFELTER APPD 11-9-92 C.C. THOMAS PRODUCT SPEC - FINISH SEE CALLOUTS
-----------------------------------------------------------------------------------------------------------------------------------------------------------	-----------------------------------------------------------------------------------------------------------------------------------------------------------------------

867948-1 PART NO		AMP AMP Incorporated Harrisburg, PA 17105-3608	
NAME RCPT. BLOCK, 4 POSN., LGH			
SIZE C 00779	CAGE CODE C-867948	DRAWING NO	
WEIGHT -	SCALE 21:1	SHEET 1 OF 1	

CUSTOMER DRAWING