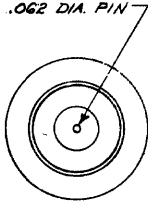
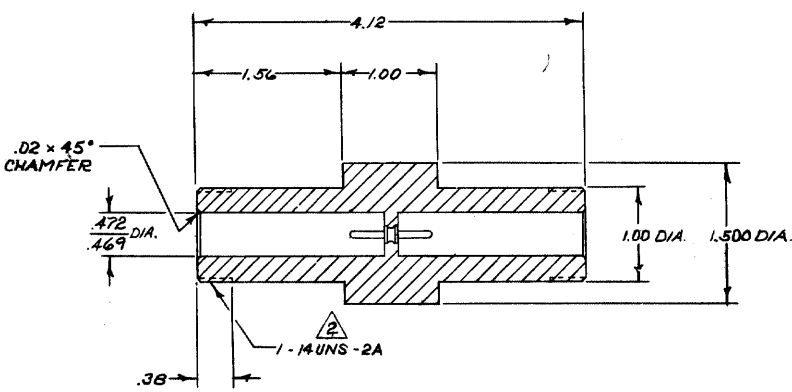


DRAWING MADE IN AMERICAN PROJECTION

© 1973 BY AMP INCORPORATED. ALL RIGHTS RESERVED. AMP PRODUCTS COVERED BY PATENTS AND/OR PATENTS PENDING.

THIS PRODUCT DESIGNED AND BUILT BY AMP INCORPORATED. NO LICENSE TO USE THIS DESIGN IN MANUFACTURE, OR TO USE ANY ISSUED OR PENDING PATENTS WHICH ARE INVOLVED, IS IMPLIED.

REVISIONS				
ZONE	LTR	DESCRIPTION	DATE	APPROVED
	D	REV. 1 REDRAWN	2/17/73	[Signature]
	E	UP-DATED ECN 8333 R.G.R.	6/1/78	[Signature]
	F	REV PER ECN 5-3960	9-10-87	R.B.



1. RECEPTACLE TO MATE WITH AMP LGH-4 LEAD ASSEMBLY. AVAILABLE SEPARATELY.

2. PER FEDERAL STANDARD H-28 3 WIRE METHOD, DIMENSION OVER WIRES TO BE: .9975-1.0186.

840467-2	AS SHOWN; WITH GOLD PLATED PIN PER MIL-G-45024 TYPE II CLASS 3
840467-1	AS SHOWN; WITH TIN PLATED PIN PER MIL-T-10727 TYPE I OR II, .0001 THK.

QTY REQD	QTY REQD	ITEM NO.	DWG SIZE	PART OR IDENTIFYING NO.	NOMENCLATURE OR DESCRIPTION	SYMBOL
-2	-1					

PARTS LIST			
UNLESS OTHERWISE SPECIFIED: DIMENSIONS ARE IN INCHES TOLERANCES .004 ± .015 ANGLES .000 ± .004	CONTRACT NO. DR C. E. DORWART CHK	AMP INCORPORATED CAPITRON DIVISION ELIZABETHTOWN, PENNSYLVANIA	
MATERIAL: MOLDED GLASS EPOXY	APPD J. W. GAW APPD	NAME CONNECTOR, FEED-THRU ASS'Y. FOR SPLICE APPLICATIONS LGH-4	
FINISH: BLACK	DSGN APPD OTHER APPD	SIZE B	CODE IDENT NO. NUMBER 89110 840467
NEXT ASSY	FINAL ASSY	NEXT ASSY	USED ON
QTY REQD	APPLICATION		

PRINT DIST

AMP 1470 REV 4/69

CUSTOMER: DRAWING