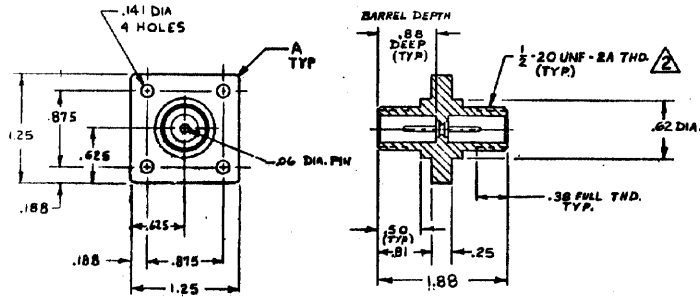


DRAWING MADE IN AMERICAN PROJECTION
 © 1967 BY AMP INCORPORATED, ALL RIGHTS RESERVED. AMP PRODUCTS COVERED BY PATENTS AND/OR PATENTS PENDING.

THIS DRAWING IS THE PROPERTY OF AMP INCORPORATED. NO PARTS TO BE REPRODUCED OR MANUFACTURED, OR TO BE USED ANYWHERE OR FOR ANY PURPOSES WITHOUT THE WRITTEN PERMISSION OF AMP INCORPORATED.



REVISIONS				
ZONE	LTR	DESCRIPTION	DATE	APPROVED
A		REVISED & REDRAWN ECN 5315 MAA	6-8-72	M. J.
B		DELETED RAISED ENGRAVING	9-21-73	K. J.
C		REVISED NOTE UAS	10-16-73	J. P.
D		UP-DATED ECN 8340 R.G.R.	8/1/74	R. J.
E		OBSOLETE -2 ECN 53622	11-13-86	K. J.
F		ADDED -5 NPR 1963 WAS 87-4087-002-01	4-9-87	K. J.
G		REV PER ECN 5-3960	7/28/87	K. J.

RECEPTACLE TO MATE WITH AMP LGH-1 1968 ASSEMBLY AVAILABLE SEPARATELY.

△ PER FEDERAL STANDARD H-28 3 WIRE METHOD. DIMENSION OVER WIRES TO BE .497-.510.

AMP PART NO	CUST PART NO	TIN	.12 X 45°	846793-5
AMP PART NO		GOLD	.03 R	846793-2
AMP PART NO		TIN	.03 R	846793-1
MARKING		PIN FINISH	A	PART NO

QTY REQD	QTY REGD	ITEM NO.	DWG SIZE	PART OR IDENTIFYING NO.	NOMENCLATURE OR DESCRIPTION	SYMBOL

UNLESS OTHERWISE SPECIFIED:		CONTRACT NO.		AMP INCORPORATED CAPITRON DIVISION ELIZABETHTOWN, PENNSYLVANIA	
FINISH:	BLACK	DR	G. HOUSER 41567	NAME	LGH-1 RECEPTACLE (FOR BULKHEAD APPLICATION)
MATERIAL:	GLASS EPOXY (MOLDED)	APPD	REN K. 41567	SIZE	B
OTHER APPD		CODE IDENT NO.	00779	NUMBER	846793
SCALE	1:1	SHEET	1 of 1		

470 REV 8/66

CUSTOMER DRAWING