

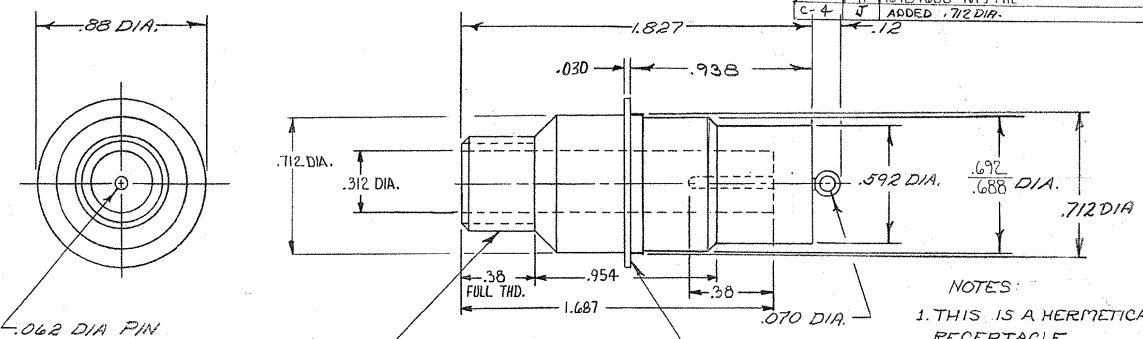
DRAWING MADE IN AMERICAN PROJECTION

© 1975 BY AMP INCORPORATED. ALL RIGHTS RESERVED. AMP PRODUCTS COVERED BY PATENTS AND PATENTS PENDING.

Unpublished copy not to be reproduced or published without written permission of AMP Incorporated

K	ADDED .712 DIA. FLANGE	10/7/78	M.S.
L	REV PER OH14-0192-05	1-06	PY

ZONE	LTR	DESCRIPTION	DATE	APPROVED
	A	REV. 1 REDRAWN	2/4/73	RE FRY
	B	DELETED .872; ADDED .938	4-4-73	RE FRY
	C	ADDED TIN & GOLD PLATED FLANGES TO 1 & 2	7-18-73	RE FRY
B-2	D	ADDED NOTE -2	1/23/74	M.S.
	E	REV. -2	2/6/74	RE FRY
	F	ADDED .312 DIA., .38, .020, .954, 1.687; ECN 8041, D.S.	5-19-75	M.S.
	G	REMOVED -2	DS 10-14-76	M.S.
	H	.692/.688 W/F .712	7/1/78	M.S.
C-4	J	ADDED .712 DIA.	EN 9/27/82	M.S.



NOTES:
 1. THIS IS A HERMETICALLY SEALED RECEPTACLE
 2. SCREW THREAD MEASUREMENT IN ACCORDANCE WITH H28 HANDBOOK. (3 WIRE METHOD). USING WIRE .02887 DIA. - MEASUREMENT OVER WIRE SHALL BE .510/.497

5-861255-1	TIN PLATED PIN AND FLANGE	WITH MARKING
861255-1	TIN-LEAD PLATED PIN AND FLANGE	WITH MARKING

QTY REQD	QTY REQD	ITEM NO.	DWG SIZE	PART OR IDENTIFYING NO.	NOMENCLATURE OR DESCRIPTION	SYMBOL
-2	-1					

UNLESS OTHERWISE SPECIFIED: DIMENSIONS ARE IN INCHES TOLERANCES .00+ .01 ANGLES ±.1° .000+ .005		CONTRACT NO.	AMP INCORPORATED CAPITRON DIVISION ELIZABETHTOWN, PENNSYLVANIA
MATERIAL: MOLDED GLASS EPOXY		DR 2/27/73	
FINISH: BLACK		CHK	NAME FLANGED RECEPTACLE ASSEMBLY LGN-1L
NEXT ASSY		APPD RE FRY 3-27-73	
QTY REQD	APPLICATION	DSGN APPD	SIZE B
		OTHER APPD	CODE IDENT NO. 00779
			NUMBER 861255
			SCALE
			WT
			SHEET

A-UP-DATE