

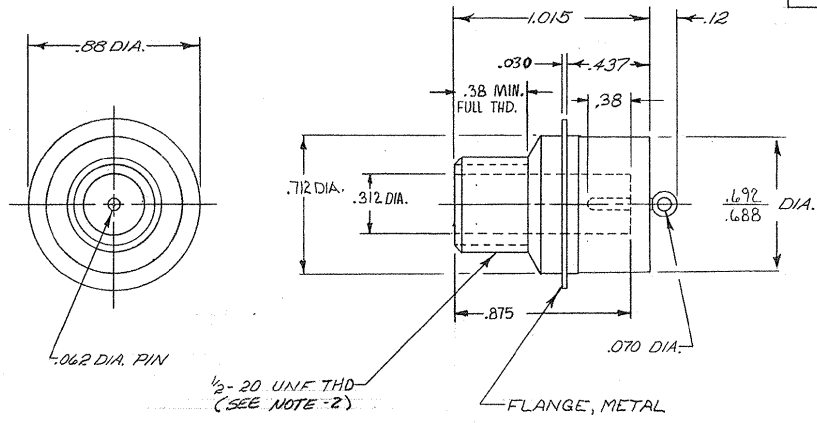
DRAWING MADE IN AMERICAN PROJECTION

© 1973 BY AMP INCORPORATED. ALL RIGHTS RESERVED. AMP PRODUCTS COVERED BY PATENTS AND/OR PATENTS PENDING.

THIS PRODUCT DESIGNED AND BUILT BY AMP INCORPORATED. NO LICENSE TO USE THAT DESIGN IN MANUFACTURE, OR TO USE ANY ISSUED OR PENDING PATENTS WHICH ARE INVOLVED, IS IMPLIED.

Unpublished copy not to be reproduced or published without written permission of AMP Incorporated

REVISIONS				
ZONE	LTR	DESCRIPTION	DATE	APPROVED
	A	ADDED TIN & GOLD PLATE FLANGES TO -1, -2	7-13-73	RE Fry
B-2	B	ADDED NOTE -2	1/23/74	M.S.
	C	REV -2	1/6/74	RE Fry
	D	ADDED .312 DIA., .875 .020, .22, ECN 8041, D.S.	5-19-75	M.S.
	E	REMOVED -2	10-14-76	M.S.
	F	REV. <del>.020</del> WAS .712 DIA.	7/27/78	M.S.
	G	REV PER OH14-D192-05	1-06	PY



NOTES:  
 1. THIS IS A HERMETICALLY SEALED RECEPTACLE  
 2. SCREW THREAD MEASUREMENT IN ACCORDANCE WITH H2B HANDBOOK. (3 WIRE METHOD). USING WIRE .02887 DIA. MEASUREMENT OVER WIRE SHALL BE .510  
 .497

QTY REQD	QTY REQD	ITEM NO.	DWG SIZE	PART OR IDENTIFYING NO.	NOMENCLATURE OR DESCRIPTION	SYMBOL	WITH MARKING WITH MARKING
-2	-1			5-86125A-1	TIN PLATED PIN AND FLANGE		WITH MARKING
				86125A-1	TIN-LEAD PLATED PIN AND FLANGE		WITH MARKING

PARTS LIST				UNLESS OTHERWISE SPECIFIED:		CONTRACT NO.		AMP INCORPORATED	
				DIMENSIONS ARE IN INCHES		DR 4-3-78		CAPITRON DIVISION	
				TOLERANCES		CHK		ELIZABETHTOWN, PENNSYLVANIA	
				.005 ± .01		APPD. RE Fry 4-1-73		NAME	
				.000 ± .005		APPD.		FLANGED RECEPTACLE ASSEMBLY LQH-1	
				ANGLES ± 1°		DSGN APPD.		SIZE	
				MATERIAL:		OTHER APPD.		CODE IDENT NO.	
				MOLDED BRASS				B 00779	
				EPOXY				NUMBER	
				FINISH:				861254	
				BLACK				SCALE 2:1	
								WT	
								SHEET	

UNPUBLISHED COPY