

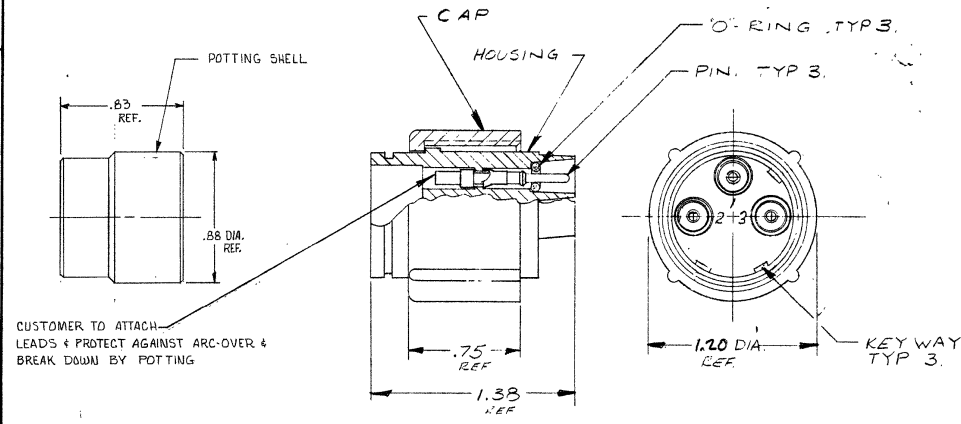
MADE IN AMERICAN PROJECTION

© 1974 BY AMP INCORPORATED. ALL RIGHTS RESERVED. AMP PRODUCTS COVERED BY PATENTS AND/OR PATENTS PENDING.

THIS PRODUCT DESIGNED AND BUILT BY AMP INCORPORATED. NO LICENSE TO USE THAT DESIGN IN MANUFACTURE, OR TO USE ANY ISSUED OR PENDING PATENTS WHEN AEE INVOLVED, IS GRANTED.

Unauthorized copy may be reproduced without written permission of AMP Incorporated.

REVISIONS				
ZONE	LTR	DESCRIPTION	DATE	APPROVED
A	REV	PER 0119-170-04	CT	10-24 CT



- NOTE:
1. MARK PER AMP SPEC. 118-30000 (WHITE) *7254
 2. PLUG WILL WITHSTAND WITHOUT BREAKDOWN 27 KVDC PIN TO PIN & 27 KVDC PIN TO GND. WHEN MATED WITH RCPT. # 853527-1
 3. PLUG & PINS SHIPPED SEPARATELY.
 4. TYPE II PINS TO ACCEPT ONE 20 AWG, (O) 22 AWG, OR (U) 24 AWG STRANDED WIRE
 5. TYPE II PINS TO ACCEPT ONE 16 AWG, OR (U) 18 AWG STRANDED WIRE
 6. TO REMOVE PINS USE EXTRACTION TOOL # 3G1751-1
 7. TYPE II PINS TO ACCEPT ONE (U) 14 AWG STRANDED WIRE.

AMP P/N	WIRE SIZE RANGE	HAND TOOL
863021-1	20, 22, 24	45099
863021-2	16, 18	45098
863021-3	14	45098

QTY REQD	QTY REQD	ITEM NO.	DWG SIZE	PART OR IDENTIFYING NO.	NOMENCLATURE OR DESCRIPTION	SYMBOL
-2	-1					
PARTS LIST						
UNLESS OTHERWISE SPECIFIED: DIMENSIONS ARE IN INCHES TOLERANCES				CONTRACT NO.		
.00 = ±				DR DICK STONE 3-2-76		
.000 = ±				NAME		
ANGLES =				AMP INCORPORATED		
				CAPITRON DIVISION		
MATERIAL: MOLDED PLASTIC				ELIZABETHTOWN, PENNSYLVANIA		
FINISH: BLACK				NAME		
				PLUG ASS'Y		
				3 PIN.		
				EGH		
NEXT ASSY				DSGN APPD		
FINAL ASSY				SIZE		
QTY REQD				CODE IDENT NO.		
				NUMBER		
				C 00779		
				863021		
				SCALE NONE		
				WT		
				SHEET 1 OF 1		