

4

3

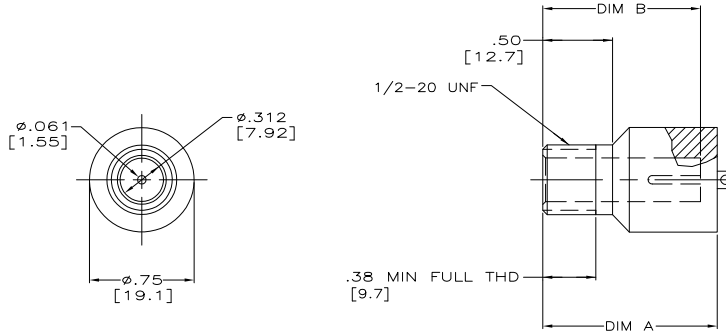
2

1

THIS DRAWING IS UNPUBLISHED. RELEASED FOR PUBLICATION - N/A.
 © COPYRIGHT N/A BY TYCO ELECTRONICS CORPORATION. ALL RIGHTS RESERVED.

LOC	DST	REVISIONS					
		P	LR	DESCRIPTION	DATE	MIN	APPD
DF	SO	M		REV PER OH14-0191-05	05-05	AA	DE

1. MARKED PER MIL-STD-130.
2. RECEPTACLE TO MATE WITH AMP LGH-1 LEAD ASSEMBLY, AVAILABLE SEPARATELY.



-	TIN PLATED	.75 [19.1]	.88 [22.4]	5-850306-4
-	TIN PLATED	.88 [22.4]	1.00 [25.4]	5-850306-3
OBSOLETE	GOLD PLATED	.75 [19.1]	.88 [22.4]	850306-8
OBSOLETE	GOLD PLATED	.88 [22.4]	1.00 [25.4]	850306-7
OBSOLETE	GOLD PLATED	1.00 [25.4]	1.12 [28.4]	850306-6
OBSOLETE	GOLD PLATED	1.12 [28.4]	1.25 [31.8]	850306-5
-	TIN-LEAD PLATED	.75 [19.1]	.88 [22.4]	850306-4
-	TIN-LEAD PLATED	.88 [22.4]	1.00 [25.4]	850306-3
OBSOLETE	TIN-LEAD PLATED	1.00 [25.4]	1.12 [28.4]	850306-2
OBSOLETE	TIN-LEAD PLATED	1.12 [28.4]	1.25 [31.8]	850306-1
REMARKS	PIN FINISH	DIM B	DIM A	PART NUMBER

DIMENSIONS:		DRAWN BY		DATE		CHECKED BY		DATE		APPROVED BY	
INCHES		S. GLATFELTER		31-OCT-98		S. GLATFELTER		31-OCT-98		S. GLATFELTER	
MATERIAL		FINISH		APPLICATION SPEC		WEIGHT		SIZE		CASE CODE	
GLASS EPOXY COLDR: BLACK		-		-		-		A2		00779	
								C=850306		RESTRICTED TO	
								CUSTOMER DRAWING		SCALE: 2:1 SHEET 1 OF 1 REV M	

AMP 1471-9 REV 31MM2000

850306

A