

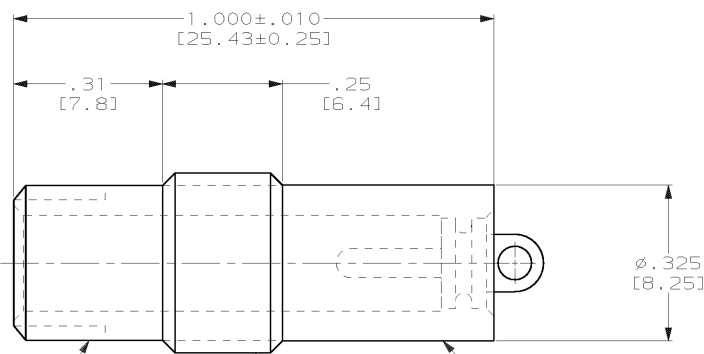
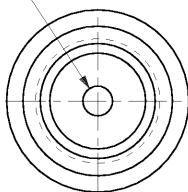
DRAWING MADE IN THIRD ANGLE PROJECTION

THIS DRAWING IS UNPUBLISHED. RELEASED FOR PUBLICATION
 © COPYRIGHT 19 BY AMP INCORPORATED. ALL INTERNATIONAL RIGHTS RESERVED.

PROD 4087
 LOC DF
 DIST 50

		REVISIONS			
P	F	ZONE	DESCRIPTION	DATE	APPD
		0	RELEASED PER NPR 92-178 CT	7-92	SG
✓		A	REV PER 0600-1555-93 CT	5-94	DE
✓	✓	B	REV PER 0600-8083-98 JB	03-99	ML

.062 [1.57] DIA PIN
 MAT'L: BRASS PER ASTM-B-16
 FINISH: GOLD PLATED PER MIL-G-45204
 OVER NICKEL PER QQ-N-290



5/16-32 UNEF-2A

3/8-24 UNF-2A

RECEPTACLE
 MAT'L: EPOXY MLDG. CMPD.
 COLOR: BLACK

- RECEPTACLE WILL ACCEPT A LGH-1/2L LEAD WITH A .89 [22.6] MOLDED END LENGTH.

448464-1

PART NO

DO NOT SCALE PRINT. UNLESS SPECIFIED DIMENSIONS IN INCHES (mm)	DR 7-1-92 C.C. THOMAS
TOLERANCES ON: 1. PLC DEC ± .01 [0.31]	CHK 7-8-92 S. GLATFELTER
2. PLC DEC ± .005 [0.13]	APPD 7-8-92 S. GLATFELTER
3. ANGLE ± -	APPD 7-8-92 C.C. THOMAS
MATERIAL SEE CALLOUTS	PRODUCT SPEC -
FINISH SEE CALLOUTS	APPLICATION SPEC -
	WEIGHT -

AMP AMP Incorporated
 Harrisburg, PA 17105-3608

NAME
 RECEPTACLE, LGH-1/2L, SPECIAL

SIZE B CAGE CODE 00779 DRAWING NO C=448464

SCALE 5:1 SHEET 1 OF 1

THIS DRAWING IS A CONTROLLED DOCUMENT FOR AMP INCORPORATED. IT IS SUBJECT TO CHANGE AND THE CONTROLLING ENGINEERING ORGANIZATION SHOULD BE CONTACTED FOR THE LATEST REVISION.

AMP 1470-15 REV 3-92
 25 MAY 1994 14:29:04 AMP16412 40128BU.CORE.PRODU.LGH

CUSTOMER DRAWING