

4

3

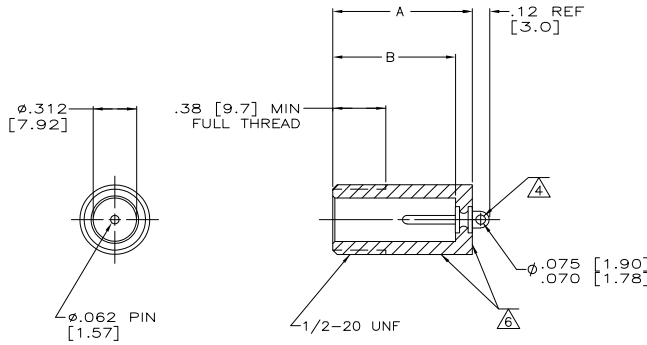
2

1

THIS DRAWING IS UNPUBLISHED. RELEASED FOR PUBLICATION - N/A.
 © COPYRIGHT N/A BY TYCO ELECTRONICS CORPORATION. ALL RIGHTS RESERVED.

LOC	DIST	REVISIONS					
DF	SO	P	LTR	DESCRIPTION	DATE	MIN	APD
		AB		REV PER OH14-0191-05	05-05	AA	DE

- RECEPTACLE TO MATE WITH AMP LGH-1 LEAD ASSY.
- MARKED PER MIL-STD-130.
- ~~MARKED PER MIL-STD-130 INCLUDING CUST P/N 15020-002.~~
- PIN EYELET IS SOLDER DIPPED ON 1--7 ONLY.
- SPECIAL TESTING/INSPECTION:
100% VISUAL WORKMANSHIP/APPEARANCE
100% DWV 30,000VDC @ S.L./AMBIENT CONDITIONS
- .500 [12.70] DIA. AND REAR SURFACE SAND BLASTED TO PROMOTE ADHESION TO POTTING MATERIAL.



△	TIN	.88 [22.4]	1.00 [25.4]	6-834333-8
-	TIN	.75 [19.0]	.88 [22.4]	5-834333-3
-	TIN	.88 [22.4]	1.00 [25.4]	5-834333-2
-	TIN	1.00 [25.4]	1.12 [28.4]	5-834333-1
-	TIN	1.12 [28.4]	1.25 [31.7]	5-834333-0
△	TIN-LEAD	.88 [22.4]	1.00 [25.4]	1-834333-8
△	TIN-LEAD	.88 [22.4]	1.00 [25.4]	1-834333-7
△	TIN-LEAD	.88 [22.4]	1.00 [25.4]	1-834333-6
OBSOLETE	GOLD	.75 [19.0]	.88 [22.4]	834333-7
OBSOLETE	GOLD	.88 [22.4]	1.00 [25.4]	834333-6
OBSOLETE	GOLD	1.00 [25.4]	1.12 [28.4]	834333-5
OBSOLETE	GOLD	1.12 [28.4]	1.25 [31.7]	834333-4
-	TIN-LEAD	.75 [19.0]	.88 [22.4]	834333-3
-	TIN-LEAD	.88 [22.4]	1.00 [25.4]	834333-2
-	TIN-LEAD	1.00 [25.4]	1.12 [28.4]	834333-1
-	TIN-LEAD	1.12 [28.4]	1.25 [31.7]	834333
REMARKS	PIN PLATING	DIM B	DIM A	PART NO.

THIS DRAWING IS A CONTROLLED DOCUMENT.

DESIGNED BY: C. THOMAS 23-MAR-94	DATE: 23-MAR-94	TYCO Electronics Corporation
OK: C. SHELLY 11-APR-94	DATE: 11-APR-94	Harrisburg, Pa 17105-3608
APPROVED: C. SHELLY	NAME: C. SHELLY	RECEPTACLE
PRODUCT SPEC: LGH-1	APPLICATION SPEC: -	SIZE: A2
MATERIAL: EPOXY MLDG CMPD	FINISH: -	CHG CODE: C=834333
COLOR: BLACK	CUSTOMER DRAWING	SCALE: 2:1 SHEET 1 OF 1 REV AB

834333

A