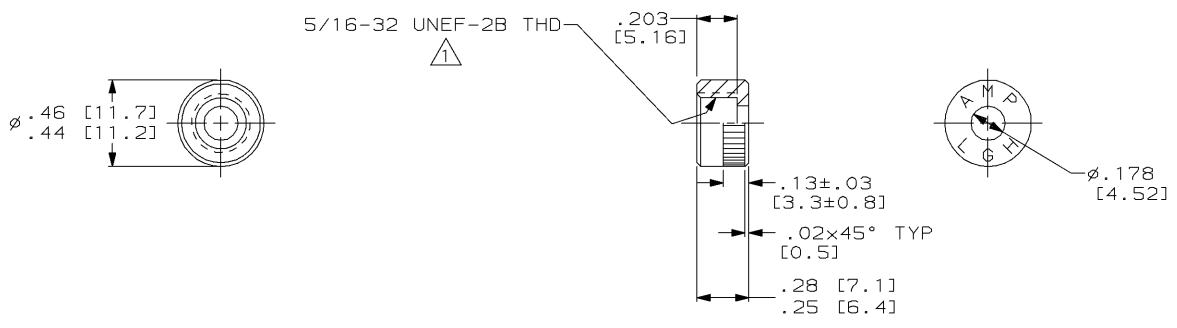


4
DRAWING MADE IN THIRD ANGLE PROJECTION
THIS DRAWING IS UNPUBLISHED. RELEASED FOR PUBLICATION, 19 .
© COPYRIGHT 19 BY AMP INCORPORATED. ALL INTERNATIONAL RIGHTS RESERVED.

PROD CODE	LOC	DIST	REVISIONS							
4090	DF	S0	P	F	ZONE	LTR	DESCRIPTION	DATE	APPD	
			✓	✓		C	REV & REDRAWN; DF-S404	CT	5-92	SG
			✓	✓		D	REV PER ECN DF-6587 JB.		3-93	KJK



⚠ THREAD AREA SHOULD NOT BE GAGED AS A MACHINED PART. PART WILL MATE AND BE FUNCTIONAL WITH MATING HALF OF LGH CONNECTORS.

862298-1
PART NO.

DO NOT SCALE PRINT. UNLESS SPECIFIED DIMENSIONS IN INCHES [mm] TOLERANCES ON: 2 PLC DEC ± .03 [0.8] 3 PLC DEC ± .010 [0.25] ANGLES ± -	DR 5-1-92 C.C. THOMAS	AMP Incorporated Harrisburg, PA 17105-3608	NAME		
	CHK 7-27-92 S. GLATFELTER		CAP, LGH-1/2 & 1/2L		
	APPD 7-27-92 S. GLATFELTER		SIZE	CAGE CODE	DRAWING NO
	MATERIAL EPOXY MLDG. CMPD.		8	00779	C=862298
FINISH COLOR: GREEN	APPLICATION SPEC -	SCALE	2:1	SHEET	1 OF 1
	WEIGHT -	CUSTOMER DRAWING			

THIS DRAWING IS A CONTROLLED DOCUMENT FOR AMP INCORPORATED. IT IS SUBJECT TO CHANGE AND THE CONTROLLING ENGINEERING ORGANIZATION SHOULD BE CONTACTED FOR THE LATEST REVISION.