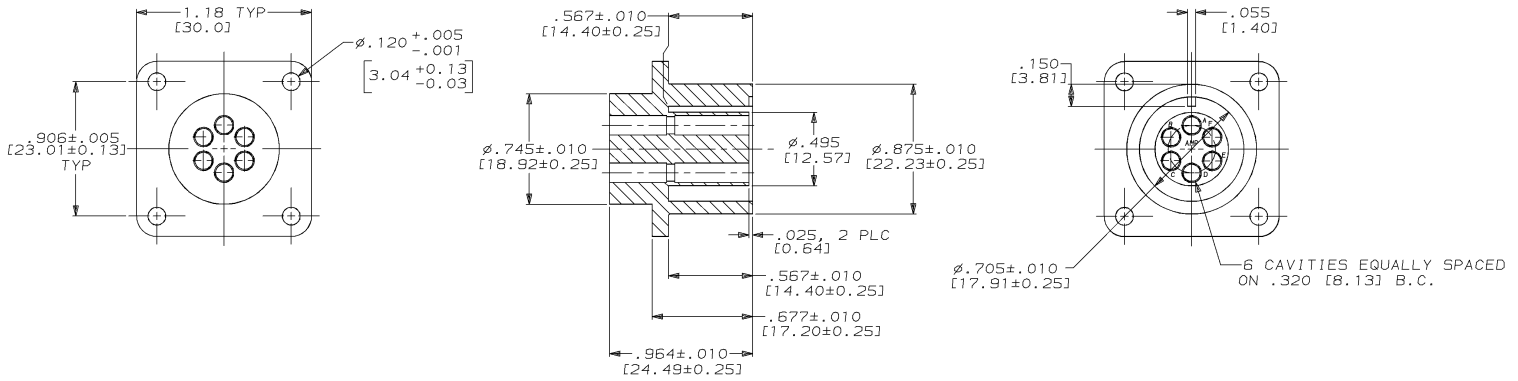


THIS DRAWING IS UNPUBLISHED. RELEASED FOR PUBLICATION
 © COPYRIGHT 19 BY AMP INCORPORATED. ALL INTERNATIONAL RIGHTS RESERVED.

REVISIONS										
PROD CODE	LOC	DIST	P	F	ZONE	LTR	DESCRIPTION	DATE	APPD	
4085	DF	50				A	REV PER 0600-4326-95	CT	10-95	DE



- THIS CONNECTOR ACCEPTS SIX AMP MULTIMATE SOCKET CONTACTS, NOT SUPPLIED WITH CONNECTOR.
- MARKED PER MIL-STD-130.

449652-1
PART NO.

DO NOT SCALE PRINT. UNLESS SPECIFIED DIMENSIONS IN INCHES [mm] TOLERANCES ON : 2 PLC DEC ± .03 (0.8) 3 PLC DEC ± .005 (0.13) ANGLES ± -	DR 9-8-93 C.C. THOMAS	AMP Incorporated Harrisburg, PA 17105-3608	
MATERIAL POLYESTER MLDG CMPD	CHK 9-8-93 S. GLATFELTER		
COLOR RED	APPD 9-9-93 C.C. THOMAS	PRODUCT SPEC -	SIZE C 00779
WEIGHT -	APPLICATION SPEC -	SCALE 2:1	DRAWING NO C=449652
		SHEET 1 OF 1	

THIS DRAWING IS A CONTROLLED DOCUMENT FOR AMP INCORPORATED. IT IS SUBJECT TO CHANGE AND THE CONTROLLING ENGINEERING ORGANIZATION SHOULD BE CONTACTED FOR THE LATEST REVISION.

CUSTOMER DRAWING