

4
DRAWINGS MADE IN THIRD ANGLE PROJECTION

3

2

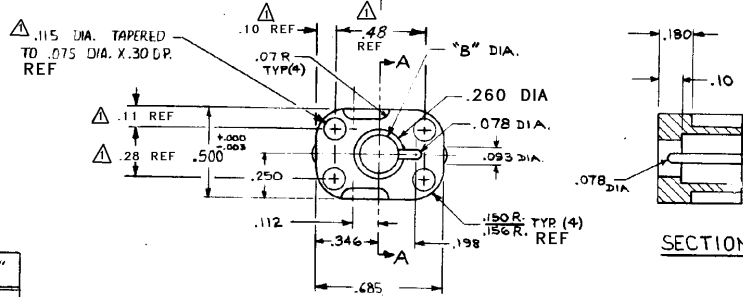
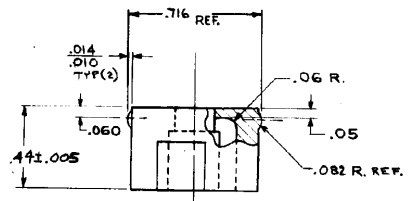
1

LOC L 40
DIST 40

© COPYRIGHT 1973 BY AMP INCORPORATED, HARRISBURG, PA.
ALL INTERNATIONAL RIGHTS RESERVED. AMP INCORPORATED PRODUCTS
COVERED BY U.S. AND FOREIGN PATENTS AND/OR PATENTS PENDING.

THIS INFORMATION IS CONFIDENTIAL AND IS DISCLOSED TO YOU ON CONDITION THAT NO FURTHER DISCLOSURE IS MADE BY YOU TO OTHER THAN AMP PERSONNEL WITHOUT WRITTEN AUTHORIZATION FROM AMP INCORPORATED, HARRISBURG, PA.
THIS PRODUCT DESIGNED AND BUILT BY AMP INCORPORATED. NO LICENSE TO USE THAT DESIGN IN MANUFACTURE, OR TO USE ANY ISSUED OR PENDING PATENTS WHICH ARE INVOLVED, IS IMPLIED.

REVISIONS						
P	F	ZONE	LTR	DESCRIPTION	DATE	APPROVED
			A	REVISED & REDRAWN	10-20-73	H. H. H.
			B	ADDED .115 DIA. HOLES TYP(4)	2-28-74	J.P.A.
			C	.11 WAS .10, .500 WAS .485, .250 WAS .245, .346 WAS .342, .693 WAS .685, .150/.156 R. WAS .14 D.S.	2/21/74	M.S.
			D	ADDED .716 REF.		
			D	REVISED	10-1-76	M.S.
			E	ADDED TABLE & 861276-2.	RPH	10-1-82
			F	.442 WAS .45 ECH 9638	EN	2/23/83
			F1	ADDED - B ECH 9638	EN	4/19/82
			G	ECO-09-018671	PY	08-09
			H	ECO-10-019774	PY	10-10



△ THESE DIMENSIONS ARE FOR CORING.
DO NOT MEASURE

PART NO.	DIM. "B"	
861276-1	.202	
" -2	.234	OBSOLETE
861276-3	.250	OBSOLETE

CODE IDENT	DWG SIZE	PART NO OR IDENTIFYING NO	NOMENCLATURE OR DESCRIPTION	ITEM NO
			REVISION OF EACH ASSY NO (WHEN BLANK, USE DWG REVISION)	
QTY REQD PER ASSY		PARTS LIST		
UNLESS OTHERWISE SPECIFIED DIMENSIONS ARE IN INCHES. TOLERANCES: .000 ± .000 ± .005 ANGLES ±		CONTRACT NO DR L. GEIB 2-1-73 CHK APPD M. GARDNER 3-3-73 APPO DESGN APPD OTHER APPD		
MATERIAL VALOX 420-SEO 26682-1		NAME AMP INCORPORATED Elizabethtown, Pa. END PLATE LGH		
FINISH BLACK		SIZE B CODE IDENT NO 861276 NUMBER 861276		
NEXT ASSY		SCALE 2:1		
FINAL ASSY		WT		
QTY REQD		SHEET 1/1		
APPLICATION		REV. H		

AMP 1470 REV 1-73