

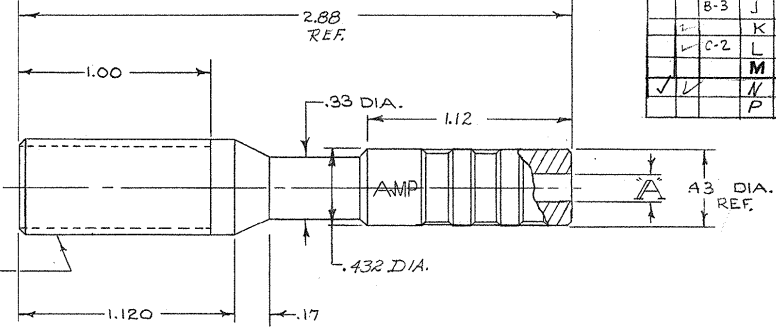
DRAWING MADE IN THIRD ANGLE PROJECTION

© COPYRIGHT 1973 BY AMP INCORPORATED, HARRISBURG, PA. ALL INTERNATIONAL RIGHTS RESERVED. AMP INCORPORATED PRODUCTS COVERED BY U.S. AND FOREIGN PATENTS AND/OR PATENTS PENDING.

Unreproduced copies permitted without written permission.

LOC 50

REVISIONS						
P	F	ZONE	LTR	DESCRIPTION	DATE	APPROVED
		A		WAS SK-3750B	10-16-73	H. H.
		B		REV. NOTE 2	10-24-73	H. H.
		C		ADDED NOTES 7-3 THRU-6 FROM NOTE 2	11-17-73	J.P.
		D		ADDED MARKING (AMP)	11-17-73	J.P.
		E		REV PER ECN 4322	1-10-74	H. H.
		F		ADDED NOTE 4	8-12-74	H. H.
		G		ADDED -7 & -8	12-10-75	J.P.
		H		66400-1 WAS 66332-1 66099-2 WAS 66098-2	1-14-77	M.G.
		B-3	J	.17 WAS .18, ECN 8233	3-4-78	M.G.
			K	REV. ECN 8412	11/18/78	M.G.
		C-2	L	DELETED CHAMFER AT "A" DIM. 2.29323	11-24-81	M.G.
			M	OBSOLETE -6 ECNS3621	11-3-86	R3
			N	OBS-5-7-8 ECNDF0376	2-89	T.W.
			P	REV PER OH14-0192-05	1-06	PY



NOTE:
 1. A DIM. TOL. = +.005, -.000
 2. AMP PIN 66361-2 IS FOR 14 AWG WIRE
 AMP PIN 66400-1 IS FOR 22-20 AWG WIRE
 AMP PIN 66099-2 IS FOR 18-16 AWG WIRE
 (CRIMP ON SNAP IN TYPE)
 3. MAX. VOLTAGE:
 20 KVDC
 8 KVAC RMS 60 HZ
 4. USE AMP CRIMP TOOL # 90067-2, 90208-1

AMP P/N	A	L.P. PIN	CRIMP TOOL # NO.
861753-1	.185	66400-1	90067-2
↑ -2	.302	66099-2	90067-2
-3	.185	66099-2	90067-2
-4	.302	66400-1	90067-2
OBS -5	.185	NONE	NONE
OBS -6	.302	NONE	NONE
↓ -7	.185	66361-2	90208-1
861753-8	.302	66361-2	90208-1
5-861753-1	.185	1-66400-0	90067-2
5-861753-2	.302	1-66099-5	90067-2
5-861753-4	.302	1-66400-0	90067-2

UNLESS OTHERWISE SPECIFIED DIMENSIONS ARE IN INCHES. TOLERANCES: .00 ± .02 .000 ± .010 ANGLES ±		CONTRACT NO		PART NO	
MATERIAL POLYESTER		DR 9/17/73		AMP INCORPORATED Elizabethtown, Pa.	
FINISH BLACK		CHK		NAME RECEPTACLE LGH	
NEXT ASSY		APPD 9/29/73		SIZE B	
FINAL ASSY		APPD		CODE IDENT NO 00779	
NEXT ASSY		DESIGN APPD		NUMBER 861753	
APPLICATION		OTHER APPD		SCALE 2:1	
QTY REQD				WT	
				SHEET 10 F 1	

AMP 1470-14 (1-73)

CUSTOMER DRAWING