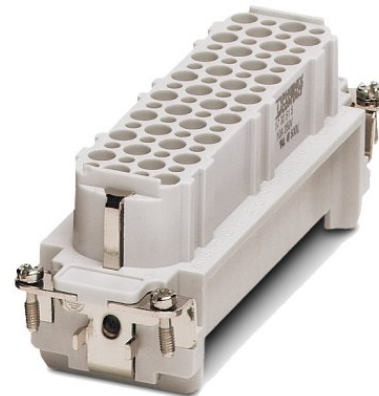


# HC-D 64-EBUC

Order No.: 1772515

<http://eshop.phoenixcontact.de/phoenix/treeViewClick.do?UID=1772515>

HEAVYCON female insert, D64 series, 64-pos., crimp connection

**Commercial data**

|                          |                    |
|--------------------------|--------------------|
| EAN                      | 4017918037185      |
| Pack                     | 10 pcs.            |
| Customs tariff           | 85366990           |
| Weight/Piece             | 0.1004 KG          |
| Catalog page information | Page 440 (PC-2009) |

**Product notes**WEEE/RoHS-compliant since:  
03/01/2006

<http://www.download.phoenixcontact.com>  
Please note that the data given here has been taken from the online catalog. For comprehensive information and data, please refer to the user documentation. The General Terms and Conditions of Use apply to Internet downloads.

**Technical data****General data**

|                                 |  |
|---------------------------------|--|
| Note                            | For HC-D64 housing, crimp contacts CK1,6-ED (crimp contacts not included in scope of supply) |
| Connection method               | Crimp connection   |
| Ambient temperature (operation) | -40 °C ... 125 °C (including heating up of contacts)   |
| Pollution degree                | 3  |

|   |  |
|---|--|
| Surge voltage category                  | III  |
| Constructional and testing regulations  | DIN VDE 0627/86<br>DIN VDE 0110/02.79<br>DIN VDE 0110-1/04.97<br>IEC 60664-1, DIN IEC 60512<br>IEC 60352 |
| Number of positions                     | 64   |
| Insertion/withdrawal cycles             | ≥ 500  |
| Design                                  | D64  |
| Connection in acc. with standard        | IEC / EN   |
| Conductor cross section                 | 0.14 mm <sup>2</sup> ... 2.5 mm <sup>2</sup>   |
| Connection cross section AWG            | 26 ... 14  |
| Stripping length of the individual wire | 8 mm<br>6 mm (2.5 mm <sup>2</sup> )  |
| Assembly instructions                   | - Use of HC-CST (1676857) keying pins and HC-CBU (1676860) keying sockets has been prescribed.           |
| Connection                              | Connectors may be plugged in only when there is no load/voltage.   |

#### Material data

|                                    |                       |
|------------------------------------|-----------------------|
| Inflammability class acc. to UL 94 | V0                    |
| Contact material                   | Copper alloy          |
| Contact surface material           | Ag (alternatively Au) |
| Contact carrier material           | PA                    |

#### Electrical characteristics

|                       |       |
|-----------------------|-------|
| Rated voltage (III/3) | 250 V |
| Rated surge voltage   | 4 kV  |
| Rated current         | 10 A  |

#### Certificates / Approvals



Certification

CSA, GOST, UL

**CSA**

|                       |       |
|-----------------------|-------|
| Nominal voltage $U_N$ | 300 V |
| Nominal current $I_N$ | 10 A  |
| AWG/kcmil             | 22-16 |

**UL**

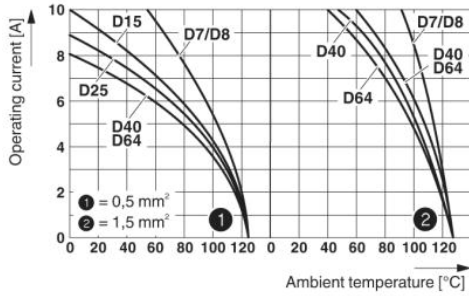
|                       |       |
|-----------------------|-------|
| Nominal voltage $U_N$ | 600 V |
| Nominal current $I_N$ | 10 A  |
| AWG/kcmil             | 22-16 |

**Accessories**

| Item           | Designation        | Description  |
|----------------|--------------------|--|
| <b>General</b> |                    |  |
| 1645888        | CK1,6-ED-BB        | Dummy socket for contact carrier with turned CK 2.5-ED.. female contacts   |
| 1586141        | HC-B 24-ANDOCK     | Docking frame for racks, for contact inserts of B24 type, with four M5 flat headed screws, rack balance x/y axis +- 1.5 mm |
| 1644326        | HC-B-3PE           | PE multiplier, for three PE connections, for HC-B (besides HC-B..E..ZZ) / HC-BB / HC-DD / HC-D40 / HC-D64 contact inserts  |
| 1604997        | HC-B-PES           | PE screw, for contact inserts HC-B / HC-BB / HC-DD / HC-D40 / HC-D64   |
| 1685327        | HC-B-ZG            | Strain relief clamps contact inserts of series: B-, BB-, D 40, D 64, DD and HV, straight cable exit                        |
| 1685330        | HC-B-ZS            | Strain relief clamps contact inserts of series: B-, BB-, D 40, D 64, DD and HV, lateral cable exit                         |
| 1772722        | HC-CB              | Coding pin, prevents mismatching of up to six plug connectors with an identical number of positions                        |
| 1676860        | HC-CBU             | Keying socket for coding up to 16 plug connectors  |
| 1676857        | HC-CST             | Keying peg for coding up to 16 plug connectors   |
| 1660944        | HC-SMP 150-B24-AMQ | HEAVYCON connector assembly frame with panel mounting base with double locking latch, for contact inserts of type B24      |
| 1687985        | HC-SMR-B24         | HEAVYCON connector assembly frame, for contact inserts of type B24   |

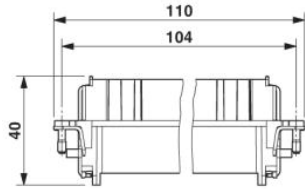
**Diagrams/Drawings**

Diagram

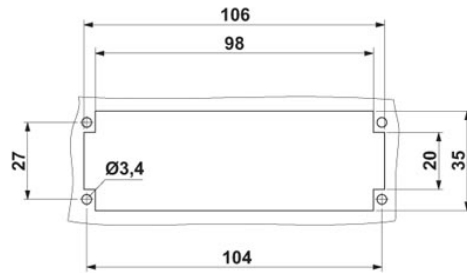
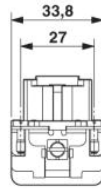


Derating diagram: HC-D...C series

Dimensioned drawing

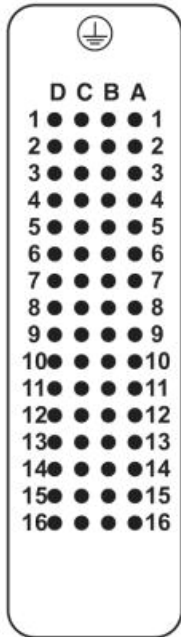


Female insert (turned contacts)

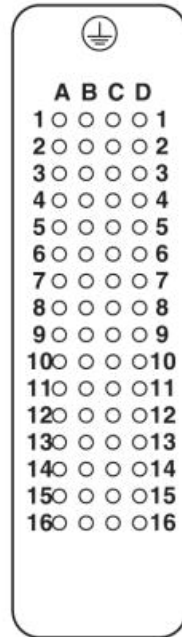


Panel cutout

Schematic diagram



Connector pin assignment, connection side



**Address**

PHOENIX CONTACT Deutschland GmbH  
Flachsmarktstr. 8  
32825 Blomberg, Germany  
Phone +49 5235 3 12000  
Fax +49 5235 3 41200  
<http://www.phoenixcontact.de>



© 2010 Phoenix Contact  
Technical modifications reserved;