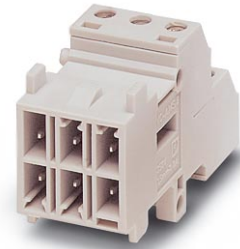


# VC-AMS 6

Order No.: 1854019




<http://eshop.phoenixcontact.de/phoenix/treeViewClick.do?UID=1854019>

Contact insert module, for panel mounting frames, with screw connection, 6-pos., 250 V / 10 A

Commercial data	
EAN	4017918144104
Pack	50 pcs.
Customs tariff	85366990
Weight/Piece	0.008086 KG
Catalog page information	Page 355 (PC-2009)

**Product notes**

WEEE/RoHS-compliant since: 03/01/2006



<http://www.download.phoenixcontact.com>  
 Please note that the data given here has been taken from the online catalog. For comprehensive information and data, please refer to the user documentation. The General Terms and Conditions of Use apply to Internet downloads.

## Technical data

General data	
Note	Plug connectors may only be connected/disconnected when under no load.
Connection method	Screw connection
	Screw connection
Tightening torque	0.22 Nm ... 0.25 Nm
Ambient temperature (operation)	-40 °C ... 100 °C

Pollution degree	3
Surge voltage category	III
Number of positions	6
Insertion/withdrawal cycles	≥ 100
Design	VC1 ... VC4
Conductor cross section AWG/kcmil min.	28
Conductor cross section AWG/kcmil max	16
2 conductors with same cross section, solid min.	0.14 mm <sup>2</sup>
2 conductors with same cross section, solid max.	0.5 mm <sup>2</sup>
2 conductors with same cross section, stranded min.	0.14 mm <sup>2</sup>
2 conductors with same cross section, stranded max.	0.75 mm <sup>2</sup>
2 conductors with same cross section, stranded, ferrules without plastic sleeve, min.	0.25 mm <sup>2</sup>
2 conductors with same cross section, stranded, ferrules without plastic sleeve, max.	0.34 mm <sup>2</sup>
2 conductors with same cross section, stranded, TWIN ferrules with plastic sleeve, min.	0.5 mm <sup>2</sup>
2 conductors with same cross section, stranded, TWIN ferrules with plastic sleeve, max.	0.5 mm <sup>2</sup>
Conductor cross section	0.14 mm <sup>2</sup> ... 1.5 mm <sup>2</sup>
Connection cross section AWG	28 ... 16
Stripping length of the individual wire	6 mm

**Material data**

Inflammability class acc. to UL 94	V0
Contact material	CuZn
Contact surface material	Tin-plated
Contact carrier material	PA

**Electrical characteristics**

Rated voltage (III/3)	250 V
Rated surge voltage	4 kV
	4 kV
Rated current	10 A

**Certificates / Approvals**



Certification CUL, GOST, LR, UL

**CUL**

Nominal voltage $U_N$	250 V
Nominal current $I_N$	8 A
AWG/kcmil	30-14

**UL**

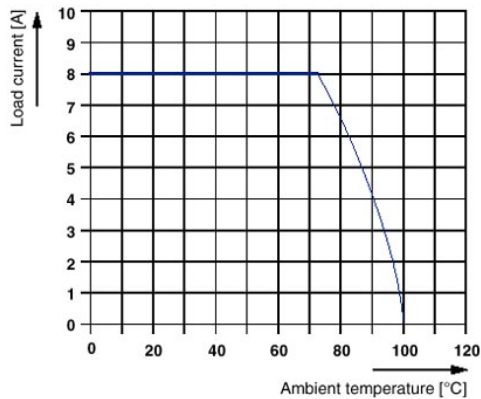
Nominal voltage $U_N$	250 V
Nominal current $I_N$	8 A
AWG/kcmil	30-14

**Accessories**

Item	Designation	Description
1734634	CP-MSTB	Keying profile, is inserted into the slot on the plug or inverted header, red insulating material

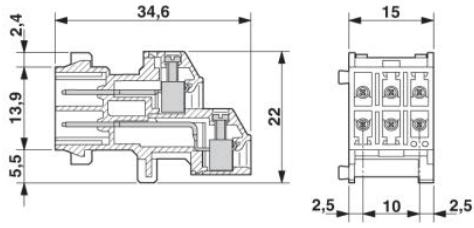
**Diagrams/Drawings**

Diagram



Dimensioned drawing

---



**Address**

PHOENIX CONTACT Inc., USA  
586 Fulling Mill Road  
Middletown, PA 17057, USA  
Phone (800) 888-7388  
Fax (717) 944-1625  
<http://www.phoenixcon.com>



© 2010 Phoenix Contact  
Technical modifications reserved;