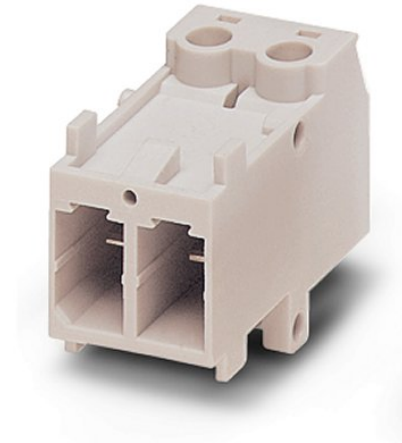


VC-AMS 2

Order No.: 1853528



<http://eshop.phoenixcontact.de/phoenix/treeViewClick.do?UID=1853528>

Contact insert module, for panel mounting frames, with screw connection, 2-pos., 400 V / 20 A

Commercial data	
EAN	4017918127060
Pack	50 pcs.
Customs tariff	85369010
Weight/Piece	0.00769 KG
Catalog page information	Page 355 (PC-2009)

Product notes

WEEE/RoHS-compliant since:
12/15/2005



<http://www.download.phoenixcontact.com>
Please note that the data given here has been taken from the online catalog. For comprehensive information and data, please refer to the user documentation. The General Terms and Conditions of Use apply to Internet downloads.

Technical data	
General data	
Note	Plug connectors may only be connected/disconnected when under no load.

Connection method	Screw connection
	Screw connection
Tightening torque	0.5 Nm ... 0.6 Nm
Ambient temperature (operation)	-40 °C ... 100 °C
Pollution degree	3
Surge voltage category	III
Number of positions	2
Insertion/withdrawal cycles	≥ 100
Design	VC1 ... VC4
Conductor cross section AWG/kcmil min.	24
Conductor cross section AWG/kcmil max	12
2 conductors with same cross section, solid min.	0.2 mm ²
2 conductors with same cross section, solid max.	2.5 mm ²
2 conductors with same cross section, stranded min.	0.2 mm ²
2 conductors with same cross section, stranded max.	1.5 mm ²
2 conductors with same cross section, stranded, ferrules without plastic sleeve, min.	0.25 mm ²
2 conductors with same cross section, stranded, ferrules without plastic sleeve, max.	1.5 mm ²
2 conductors with same cross section, stranded, TWIN ferrules with plastic sleeve, min.	0.5 mm ²
2 conductors with same cross section, stranded, TWIN ferrules with plastic sleeve, max.	2.5 mm ²
Conductor cross section	0.2 mm ² ... 4 mm ²
Connection cross section AWG	24 ... 12
Stripping length of the individual wire	10 mm

Material data

Inflammability class acc. to UL 94	V0
Contact material	CuZn
Contact surface material	Tin-plated
Contact carrier material	PA

Electrical characteristics

Rated voltage (III/3)	400 V
Rated surge voltage	6 kV
	6 kV

Rated current	20 A
---------------	------

Certificates / Approvals



Certification CUL, GOST, LR, UL

CUL

Nominal voltage U_N	600 V
Nominal current I_N	20 A
AWG/kcmil	30-10

UL

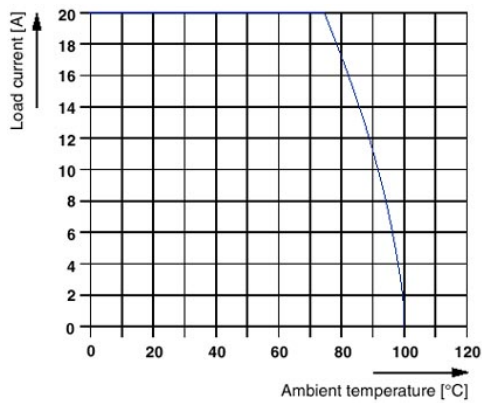
Nominal voltage U_N	600 V
Nominal current I_N	20 A
AWG/kcmil	30-10

Accessories

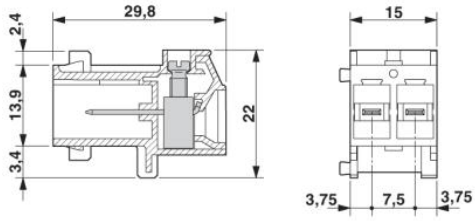
Item	Designation	Description
Plug/Adapter		
1600027	CP-HCC 4	Coding profile, Color: red

Diagrams/Drawings

Diagram



Dimensioned drawing



Address

PHOENIX CONTACT Inc., USA
586 Fulling Mill Road
Middletown, PA 17057, USA
Phone (800) 888-7388
Fax (717) 944-1625
<http://www.phoenixcon.com>



© 2010 Phoenix Contact
Technical modifications reserved;