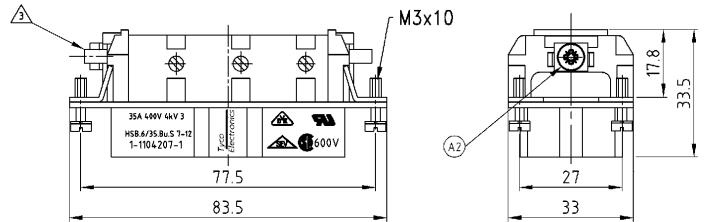


THIS DRAWING IS UNPUBLISHED.
 VERBODEN DE UNVERPENTLICHTE ZEICHNUNG
 RELEASED FOR PUBLICATION
 FREI FÜR VERÖFFENTLICHUNG
 .1997
 BY AMP INCORPORATED. ALL RIGHTS RESERVED.
 ALLE RECHTE VORBEHALTEN

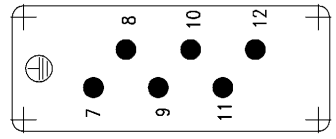
MATED WITH
 PASSEND ZU
HSB 6/35

LOC	DIST	REVISIONS ÄNDERUNGEN					
		#	LTR	DESCRIPTION BESCHREIBUNG	DATE	Dwn	APVD
AI	-						
PROJEKT NR:		A2		Notes and design corrected. EEP-06-02081	29.08.04	SR	SR

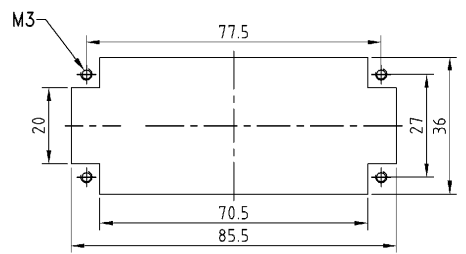


- NOTES
- ⚠ FINISH: CONTACT , AG
 - 2 POWER CONTACT: 7 TO 12
OUTER DIMENSIONS OF INSULATION: MAX. \varnothing 7.0 MM
 - ⚠ GROUNDING CONTACT
 - ⚠ SUITABLE HOOD SIZE 6: SERIES HB; HD; EMV; HIP
 - ⚠ STANDARDS:
DIN EN 61984; DIN EN 60664-1
 - ⚠ PACKAGING: 5 PIECES IN A CARTON

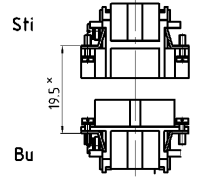
Contact arrangement view from termination side



Panel cut-out for contact insert when used without housing



Assembling instruction



× Distance for guaranteed contact max: 21 mm

1	Female insert		beige	1	-			
1-1	DESCRIPTION	MATERIAL	COLOR	ITEM NO. POS.	REMARKS			
HSB 6/35 Bu.S. 7-12 ORDERING TEXT / BESTELTEXT	<small>THIS DRAWING IS A CONTROLLED DOCUMENT FOR AMP. MODIFICATIONS IF SUBJECT TO CHANGE AND THE CONTROLLING ENGINEERING ORGANIZATION SHOULD BE CONTACTED FOR THE LATEST REVISION. DIESES ZEICHNUNGSDOKUMENT WIRD DURCH AMP INCORPORATED KONTROLLIERT. ANÄNDERUNGEN SIND MIT TECHNISCHEM PERSONNEL ZU BERÄTHERN. FOR DETAILS REFER TO THE AMP WEBSITE: www.amp.com</small>		DWN Rosen 04-06-1998		 HTS Elektrotechnik 53819 Neunkirchen, Germany			
	<small>OTHERWISE SPECIFIED: ALL DIMENSIONS IN MILLIMETERS UNLESS OTHERWISE SPECIFIED: DIMENSIONS: mm TOLERANCES UNLESS OTHERWISE SPECIFIED: F: ISO 8075 H: ISO 2768 - mS - E H: DIN 16901 - 14D</small>		APVD	NAME				
	<small>FINISH / OBERFLÄCHE / FARBE</small> ⚠		PRODUCT SPEC 108-74.006	FEMALE INSERT				
	<small>WEIGHT / GEWICHT</small> 90 g		APPLICATION SPEC 114-74.007	HSB 6/35 Bu.S. 7-12				
				SIZE	CAGE CODE	DRAWING NO. ZEICHNUNGS-NR.	RESTRICTED TO NUR FÜR	
				A3	00779	1104207	-	
				CUSTOMER DRAWING / KUNDENZEICHNUNG		PKSSTAB 1:1	BLATT 1 OF VON 1	REV A2