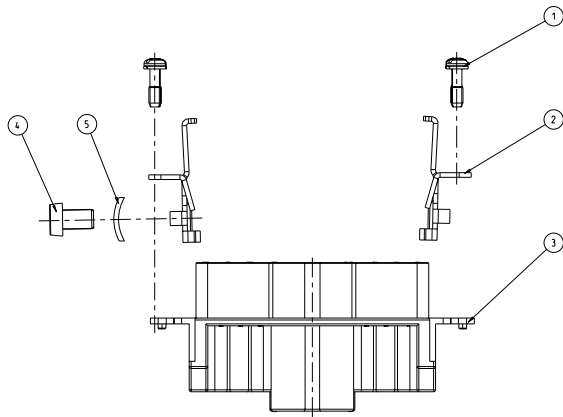
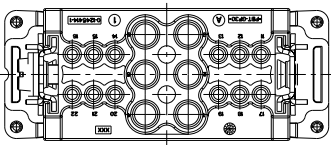


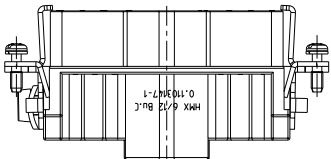
DATE REVISIONS TO IMPLEMENTATION
 REVISIONS FOR IMPLEMENTATION
 ALL RIGHTS RESERVED

REV	DATE	REVISIONS	BY	CHK	APP
AI	-				
C1	ECR-09-020756				

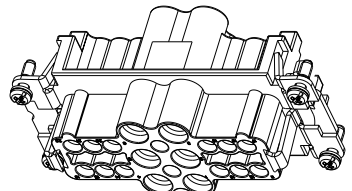
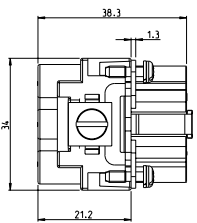
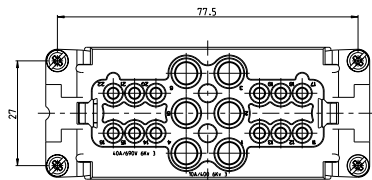
CONTACT ARRANGEMENT VIEW FROM TERMINATION SIDE



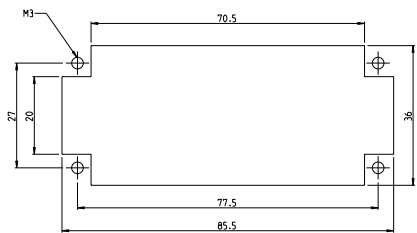
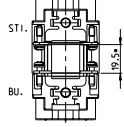
- NOTES
- POVER CONTACT : 1 TO 6
 OUTER DIMENSIONS OF INSULATION: MAX. 6.5MM
 SIGNAL CONTACT: 11 TO 22
 OUTER DIMENSIONS OF INSULATION: MAX. 3.2MM
 - SUITABLE HOOD SIZE 6
 SERIES HB, HD, EMV, AND HIP
 - STANDARDS:
 DIN EN 61984; DIN EN 60664-1
 - PACKAGING:
 5 PIECES IN A CARTON BOX



CONTACT ARRANGEMENT VIEW FROM CONNECTING SIDE



DISTANCE FOR GUARANTEED CONTACT:
 2mm MAX.



QTY	DESCRIPTION	MATERIAL	SURFACE	ITEM
1	CLIP TAB	STEEL	NICKEL PLATED	5
1	CYLINDER SCREW, M5	STEEL	NICKEL PLATED	4
1	SOCKET HOUSING	VALOX 420SE	VD1 3400-24	3
2	GRINDING CONTACT-SOCKET	Cu Zn37 F3B	Cu/Ni Sb	2
4	FIXING SCREW ASSY	St.B.8	Ni	1
QTY DESCRIPTION MATERIAL SURFACE ITEM				
0-1 ORDERING TEXT: HMX.6/12BU.C				

THIS DRAWING IS A CONTROLLED DOCUMENT		TE CONNECTIVITY	
REVISED DATE/VER:	REVISED DATE/VER:	TE CONNECTIVITY	
PROJECT SPEC:	PROJECT SPEC:	SOCKET ASSY	
APPLICATION SPEC:	APPLICATION SPEC:	HMXX 6/12 BU.C	
SIZE:	SIZE:	DATE:	DATE:
00779	00779	©=1103147	
CUSTOMER DRAWING	CUSTOMER DRAWING	SCALE:	SCALE:
		2:1	2:1

4483 124111
 POLYMER DRAWING