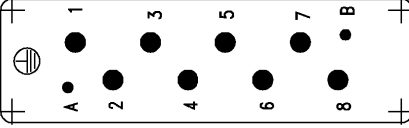


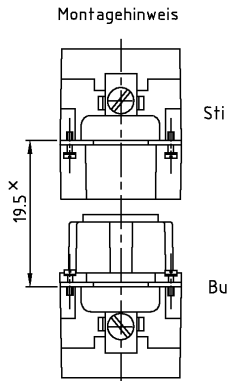
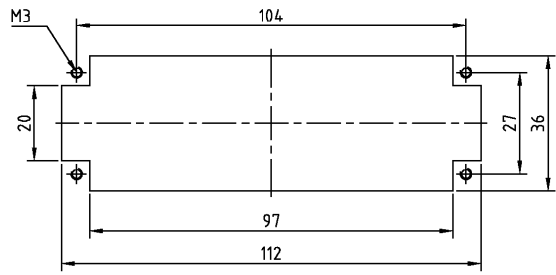
THIS DRAWING IS UNPUBLISHED.
VERTRAULICHE UNVERKÖPFTLICHE ZEICHNUNG
© COPYRIGHT 1998
RELEASED FOR PUBLICATION
FRIE PUER VERKÖPFTLICHUNG
BY AMP INCORPORATED. ALL RIGHTS RESERVED.
ALLE RECHTE VORBEHALTEN

LOC	DIST	REVISIONS ÄNDERUNGEN			DATE	DWR	APVD
A1	-	P	LTR	DESCRIPTION BESCHREIBUNG			
PROJEKT NR.		A2		Zeichnung berichtigt; EG00-1844-03	21.05.03	SR	SM

Kontaktanordnung Ansicht Anschlußseite
Contact arrangement view from termination side



Montageausschnitt bei Verwendung ohne Gehäuse
Panel cut-out for contact insert when used without housing



*Abstand für sichere Kontakt-gabe max: 21 mm

- Notes, Bemerkungen,
- △ Material: insert, PBT
UL-File Nr.: E41613(M)
 - △ Material: Einsatz: PBT
UL-File Nr.: E41613(M)
 - △ Finish: contact, Ag, Au
 - △ Oberfläche: Kontakt, Ag, Au

1	Buchseninsert HSS	△	beige	1	-	
2-3	DESCRIPTION / BENENNUNG	MATERIAL	COLOR / FARBE	ITEM NO.	POS.	REMARKS / BEMERKUNGEN
HSS.8.Bu.C	<small>THIS DRAWING IS A CONTROL DOCUMENT FOR AMP INCORPORATED. IT IS SUBJECT TO CHANGE AND THE CONTROLLING ENGINEERING ORGANIZATION SHOULD BE CONTACTED FOR THE LATEST REVISIONS. OTHER ENGINEERING DEPARTMENTS MUST CHECK FOR INCORPORATED REVISIONS. ABANDONING OR NEW TECHNOLOGY PORTFOLIO ORDERS, AND VENDORIAL USE OF THIS DRAWING WITHOUT THE APPROVAL AND SIGNATURE OF AMP ENGINEERING.</small> DIMENSIONS: DIMENSIONEN: (mm) DIMENSIONS: DIMENSIONEN: (mm) TOLERANCES UNLESS OTHERWISE SPECIFIED: TOLERANZEN UNLESS ANDERSONTOLERANZEN ALLGEMEIN: D. ISO 2875 F. ISO 2768 - mm - E G. DIN 16901 - 14.0 0 PLC 1 PLC 2 PLC 3 PLC ANGLES / WINKEL FINISH / OBERFLÄCHE / FARBE	Schneider	10.12.98			AMP HTS Elektrotechnik 53819 Neunkirchen, Germany Female insert HSS.8 Buchseninsert HSS.8
		Schweiger	10.12.98			
	MATERIAL	FINISH / OBERFLÄCHE / FARBE	WEIGHT	SIZE	CAGE CODE	DRAWING NO. ZEICHNUNGS-NR.
	△	△	-	A3	00779	1104202
	CUSTOMER DRAWING			/KUNDENZEICHNUNG	SCALE MASSTAB 1:1	SHEET OF REV. BLATT VON 1 1 A2

AMP 1470-19 REV 27JUN96 This is a TRANSLATED file from ComputerVision, Inc., Medusa Revision 12.2.5T
HARLA/EVAC/APZ/EL-CTW/282