

4

3

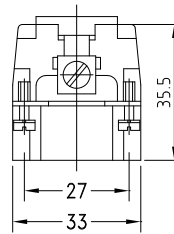
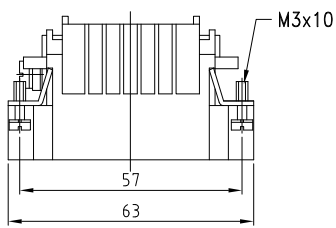
2

1

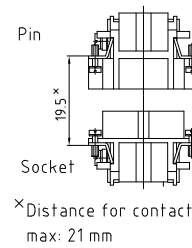
THIS DRAWING IS UNPUBLISHED. RELEASED FOR PUBLICATION
 COPYRIGHT © BY TYCO ELECTRONICS CORPORATION. ALL INTERNATIONAL RIGHTS RESERVED.

LOC	DIST	REVISIONS				
P	LTR	DESCRIPTION	DATE	DWN	APVD	
	A3	UL-File erfüllt EGD0-0218-03 UL-file removed	29.09.03	SR	SM	
	A4	REVISED PER ECO-11-002591	11FEB11	HMR	MM	

Maßbild
Outline drawing

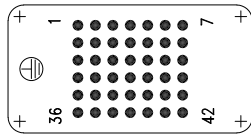


Assembly reference



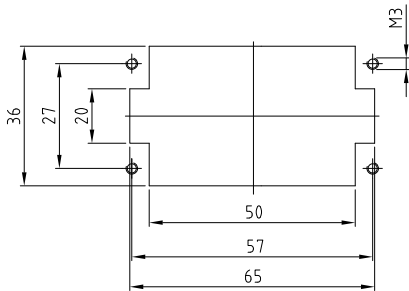
Kontaktanordnung
Contact arrangement

Ansicht Anschlußseite
view from termination side



Montageausschnitt
Panel cut-out for contact insert

bei Verwendung ohne Gehäuse
when used without housing



Notes,

- ⚠ Material: insert, PC
- ⚠ Finish: contact; Ag, Au

Bemerkungen,

- ⚠ Material: Einsatz: PC
- ⚠ Oberfläche: Kontakte; Ag, Au

1	Pin Insert HN.2D.42 Crimp	⚠	dark gray	1	-
2-3	DESCRIPTION / BENENNUNG	MATERIAL	COLOR / FARBE	ITEM NO. PDS.	REMARKS / BEMERKUNGEN
HN.2D.4.2.Sti.C ORDERING TEXT / BESTELLTEXT	THIS DRAWING IS A CONTROLLED DOCUMENT.				
	DOWNSCHNEIDER		10.11.1997		Tyco Electronics Corporation Harrisburg, Pa 17105-3608
	CHK		-		
	DIMENSIONS: mm		TOLERANCES UNLESS OTHERWISE SPECIFIED: GENERAL TOLERANCES		NAME
		1 ISO 2768 - mS - t 2 ISO 2768 - mS - t 3 ISO 2768 - mS - t 4 ISO 2768 - mS - t ANGLES ±-		MALE INSERT STIFTEINSATZ HN.2D.42	
MATERIAL		FINISH		SIZE	CAGE CODE
⚠		⚠		A3	00779
				DRAWING NO	RESTRICTED TO
				1103204	-
				WEIGHT	SCALE
				53g	1:1
				CUSTOMER DRAWING	SHEET 1 OF 1
					REV A4