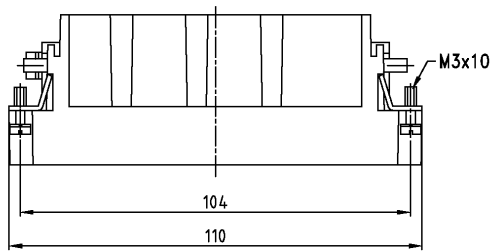
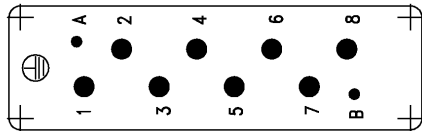


THIS DRAWING IS UNPUBLISHED VERTRAULICHE UNVERÖFFENTLICHTE ZEICHNUNG		RELEASED FOR PUBLICATION FREI FÜR VERÖFFENTLICHUNG		.1998		MATED WITH PASSEND ZUM		LOC	DIST	REVISIONS ÄNDERUNGEN					
COPYRIGHT 1998		BY AMP INCORPORATED. ALL RIGHTS RESERVED. ALLE RECHTE VORBEHALTEN						A1	-	P	LTR	DESCRIPTION BESCHREIBUNG	DATE	DWN	APVD
								PROJEKT NR.:		A1	neu gezeichnet	Eg00-1890-98	10.12.98	SR	SM

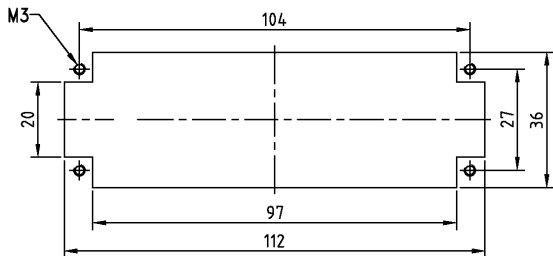
**Maßbild**  
**Outline drawing**



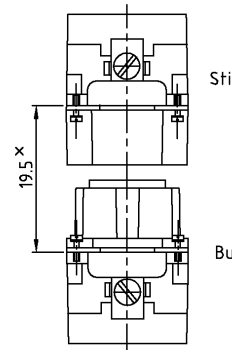
**Kontaktanordnung** Ansicht Anschlußseite  
**Contact arrangement** view from termination side



**Montageausschnitt** bei Verwendung ohne Gehäuse  
**Panel cut-out for contact insert** when used without housing



**Montagehinweis**



\* Abstand für sichere Kontaktgabe max: 21 mm

**Notes,**

- 1 Material: insert, PBT  
UL-File Nr.: E41613(M)
- 2 Finish: contact, Ag, Au

**Bemerkungen,**

- 1 Material: Einsatz: PBT  
UL-File Nr.: E41613(M)
- 2 Oberfläche: Kontakt, Ag, Au

1	Stiffeinsatz HSS.8 Crimp	△	beige	1	-
2-3	DESCRIPTION / BENENNUNG	MATERIAL	COLOR / FARBE	ITEM NO. POS.	REMARKS / BEMERKUNGEN
HSS.8.Sti.C	<small>THIS DRAWING IS A CONTROLLED DOCUMENT FOR AMP INCORPORATED. IT IS SUBJECT TO CHANGE AND THE CONTROLLING ORGANIZATION SHOULD BE CONTACTED FOR THE LATEST REVISION. ORDERING INFORMATION AND PRICE LIST INFORMATION IS AVAILABLE FROM AMP INCORPORATED. AMP INCORPORATED IS NOT RESPONSIBLE FOR THE ACCURACY OF THE INFORMATION. THE USER IS RESPONSIBLE FOR VERIFYING THE INFORMATION. AMP INCORPORATED IS NOT RESPONSIBLE FOR THE ACCURACY OF THE INFORMATION.</small> DIMENSIONS: DIMENSIONEN: mm TOLERANCES UNLESS OTHERWISE SPECIFIED: ALL DIMENSIONS UNLESS OTHERWISE SPECIFIED: mm - 0.10 DIMENSIONS: DIMENSIONEN: mm TOLERANCES UNLESS OTHERWISE SPECIFIED: ALL DIMENSIONS UNLESS OTHERWISE SPECIFIED: mm - 0.10 DIMENSIONS: DIMENSIONEN: mm TOLERANCES UNLESS OTHERWISE SPECIFIED: ALL DIMENSIONS UNLESS OTHERWISE SPECIFIED: mm - 0.10	DWN Schneider 10.12.98 ZFK Schweiger 10.12.98	<b>AMP</b> HTS Elektrotechnik 53819 Neunkirchen, Germany		
			NAME Male insert HSS.8 Stiffeinsatz HSS.8 SIZE A3 CAGE CODE 00779 DRAWING NO. 1104.200 ZECHNUNGS-NR. 1104.200 WEIGHT GEWICHT - CUSTOMER DRAWING /KUNDENZEICHNUNG	RESTRICTED TO NUR FUER	SCALE MASSTAB 1:1 SHEET OF 1 VON 1 REV. A1

AMP 1470-19 REV 27JUN96 This is a TRANSLATED file from CompuRevision, Inc., Medusa Revision 12.2.5T  
 14846FEMAC02B-C1183812