

4

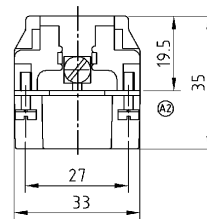
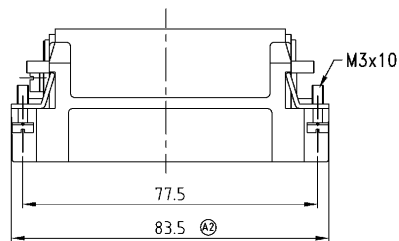
3

2

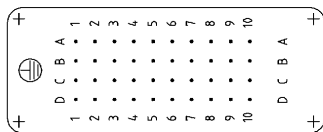
1

THIS DRAWING IS UNPUBLISHED. VERTIKALE UNVERÖFFENTLICHTE ZEICHNUNG		RELEASED FOR PUBLICATION FÜR VERÖFFENTLICHUNG		1997		MATED WITH PASSEND ZU		LOC		DIST		REVISIONS ÄNDERUNGEN									
COPYRIGHT 1997		BY AMP INCORPORATED		ALL RIGHTS RESERVED. ALLE RECHTE VORBEHALTEN		HD 40		AI		-		P LTR		DESCRIPTION BESCHREIBUNG		DATE		DWN		APVD	
PROJECT NR:								A2		Dimension changed E604-1121-04				15.11.04		AR		SM			

Maßbild
Outline drawing



Kontaktanordnung Ansicht Anschlußseite
Contact arrangement view from termination side



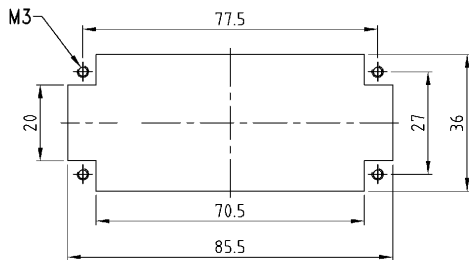
Notes,

- ① Material: insert, PC
UL-File Nr.: E101788(R)
- ② use contact-type: HD.M

Bemerkungen,

- ① Material: Einsatz: PC
UL-File Nr.: E101788(R)
- ② Kontakte: Serie HD.M

Montageausschnitt bei Verwendung ohne Gehäuse
Panel cut-out for contact insert when used without housing



1 Stifteinsatz HD.40 Crimp		MATERIAL		BEIGE		1		-		REMARKS / BEMERKUNGEN	
2-3		DESCRIPTION / BENENNUNG		COLOR / FARBE		ITEM NO. POS.		1		-	
HD 40 Stfc		ORDERING TEXT / BESTELLTXT		DWN		10.08.1998		HTS		HTS Elektrotechnik	
DIMENSIONS: (mm)		OTHERWISE SPECIFIED:		APVD		NAME		MALE INSERT		53819 Neunkirchen, Germany	
D. ISO 2198 - mm - E		ALLGEMEINTOLERANZEN		PRODUCT SPEC		108-74002		STIFTEINSATZ HD.40		RESTRICTED TO PURIFIER	
P. DIN 15005 - mm - E		D. ISO 2198 - mm - E		APPLICATION SPEC		114-74000		SIZE		A3	
P. DIN 15005 - mm - E		D. ISO 2198 - mm - E		WEIGHT		87 g		CAGE CODE		00779	
P. DIN 15005 - mm - E		D. ISO 2198 - mm - E		CUSTOMER DRAWING		/KUNDENZEICHNUNG		DRAWING NO		1103012	
P. DIN 15005 - mm - E		D. ISO 2198 - mm - E		MASSSTAB		1:1		BLATT		1	
P. DIN 15005 - mm - E		D. ISO 2198 - mm - E		OF		1		REV		A2	