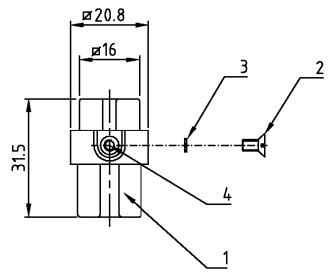


THIS DRAWING IS UNPUBLISHED.  
VERTRAULICHE UNVERÖFFENTLICHTE ZEICHNUNG  
© COPYRIGHT 1997

RELEASED FOR PUBLICATION  
FREI FÜR VERÖFFENTLICHUNG  
BY AMP INCORPORATED. ALL RIGHTS RESERVED.  
ALLE RECHTE VORBEHALTEN

MATED WITH:  
PASSEND ZU:  
Bgl

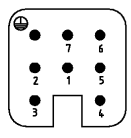
LOC	DIST	REVISIONS ÄNDERUNGEN			
P	LTR	DESCRIPTION BESCHREIBUNG	DATE	DWR	APVD
A1	-				
PROJEKT NR.:		A2 Zeichnung überarbeitet; Eg90-0835-01	05.03.02	SR	SM



Notes, Bemerkungen,  
 ⚠ Material: insert, PC UL-File Nr.: E101788(R) | ⚠ Material: Einsatz: PC UL-File Nr.: E101788(R)

Kontaktanordnung  
Contact arrangement

Ansicht Anschlußseite  
view from termination side



ITEM NO.	DESCRIPTION / BENENNUNG	MATERIAL	COLOR / FARBE	ITEM NO. POS.	REMARKS / BEMERKUNGEN																																
1	Gewindeinsatz M3x5.5	Messing	blank	4																																	
1	Fächerscheibe V3.2	V2A	blank	3	separat in Poly-Beutel																																
1	Senkschraube M3x6	V2A	blank	2	separat in Poly-Beutel																																
1	Buchseinsatz HN.D7	Lexan	dunkelgrau	1																																	
2-3	<table border="1"> <tr> <td colspan="2"> <small>THE DRAWING IS A CONTROLLED DOCUMENT FOR AMP INCORPORATED. IT IS SUBJECT TO CHANGE AND THE CONTROLLING ENGINEERING ORGANIZATION SHOULD BE CONTACTED FOR THE LATEST REVISIONS. OTHER ORGANIZATIONS MUST CHECK FOR INCORPORATED REVISIONS. ABBREVIATIONS: DE: DEUTSCHE TECHNISCHE HOCHSCHULE DUISBURG, AND UNIVERSAL TECH. DER DUISBURG LETTERS THEIR ADMINISTRATION AND OFFICERS BY AMP APPROVAL.</small> </td> <td colspan="2"> <b>AMP</b> HTS Elektrotechnik 53819 Neunkirchen, Germany             </td> </tr> <tr> <td colspan="2"> <small>DIMENSIONS: DIMENSIONEN: mm</small> </td> <td colspan="2"> <small>TOLERANCES UNLESS OTHERWISE SPECIFIED: ALLGEMEINTOLERANZEN</small> </td> </tr> <tr> <td colspan="2"> <small>0 PLC</small> </td> <td colspan="2"> <small>0.150 ±0.15</small> </td> </tr> <tr> <td colspan="2"> <small>1 PLC</small> </td> <td colspan="2"> <small>0.150 27±0.15 - 0.150 -E</small> </td> </tr> <tr> <td colspan="2"> <small>2 PLC</small> </td> <td colspan="2"> <small>0.150 16±0.15 - 0.150</small> </td> </tr> <tr> <td colspan="2"> <small>3 PLC</small> </td> <td colspan="2"> <small>0.150</small> </td> </tr> <tr> <td colspan="2"> <small>ANGLES / WINKEL</small> </td> <td colspan="2"> <small>FINISH / OBERFLÄCHE / FARBE</small> </td> </tr> <tr> <td colspan="2"> <small>MATERIAL</small> </td> <td colspan="2"> <small>WEIGHT / GEWICHT</small> </td> </tr> </table>					<small>THE DRAWING IS A CONTROLLED DOCUMENT FOR AMP INCORPORATED. IT IS SUBJECT TO CHANGE AND THE CONTROLLING ENGINEERING ORGANIZATION SHOULD BE CONTACTED FOR THE LATEST REVISIONS. OTHER ORGANIZATIONS MUST CHECK FOR INCORPORATED REVISIONS. ABBREVIATIONS: DE: DEUTSCHE TECHNISCHE HOCHSCHULE DUISBURG, AND UNIVERSAL TECH. DER DUISBURG LETTERS THEIR ADMINISTRATION AND OFFICERS BY AMP APPROVAL.</small>		<b>AMP</b> HTS Elektrotechnik 53819 Neunkirchen, Germany		<small>DIMENSIONS: DIMENSIONEN: mm</small>		<small>TOLERANCES UNLESS OTHERWISE SPECIFIED: ALLGEMEINTOLERANZEN</small>		<small>0 PLC</small>		<small>0.150 ±0.15</small>		<small>1 PLC</small>		<small>0.150 27±0.15 - 0.150 -E</small>		<small>2 PLC</small>		<small>0.150 16±0.15 - 0.150</small>		<small>3 PLC</small>		<small>0.150</small>		<small>ANGLES / WINKEL</small>		<small>FINISH / OBERFLÄCHE / FARBE</small>		<small>MATERIAL</small>		<small>WEIGHT / GEWICHT</small>	
<small>THE DRAWING IS A CONTROLLED DOCUMENT FOR AMP INCORPORATED. IT IS SUBJECT TO CHANGE AND THE CONTROLLING ENGINEERING ORGANIZATION SHOULD BE CONTACTED FOR THE LATEST REVISIONS. OTHER ORGANIZATIONS MUST CHECK FOR INCORPORATED REVISIONS. ABBREVIATIONS: DE: DEUTSCHE TECHNISCHE HOCHSCHULE DUISBURG, AND UNIVERSAL TECH. DER DUISBURG LETTERS THEIR ADMINISTRATION AND OFFICERS BY AMP APPROVAL.</small>		<b>AMP</b> HTS Elektrotechnik 53819 Neunkirchen, Germany																																			
<small>DIMENSIONS: DIMENSIONEN: mm</small>		<small>TOLERANCES UNLESS OTHERWISE SPECIFIED: ALLGEMEINTOLERANZEN</small>																																			
<small>0 PLC</small>		<small>0.150 ±0.15</small>																																			
<small>1 PLC</small>		<small>0.150 27±0.15 - 0.150 -E</small>																																			
<small>2 PLC</small>		<small>0.150 16±0.15 - 0.150</small>																																			
<small>3 PLC</small>		<small>0.150</small>																																			
<small>ANGLES / WINKEL</small>		<small>FINISH / OBERFLÄCHE / FARBE</small>																																			
<small>MATERIAL</small>		<small>WEIGHT / GEWICHT</small>																																			
<small>ORDERING TEXT / BESTELLTEXT</small> HN.D.7.Bu.C		<small>DWN</small> Schneider 28.07.1999 <small>CHK</small> Schweiger 28.07.1999 <small>NAME</small> Female insert Buchseinsatz HN.D.7.Bu.C		<small>SIZE</small> A3 <small>CAGE CODE</small> 00779 <small>DRAWING NO. ZEICHNUNGS-NR.</small> 1103103 <small>RESTRICTED TO NUR FÜR</small> -																																	
<small>CUSTOMER DRAWING</small>		<small>/KUNDENZEICHNUNG</small>		<small>MASSSTAB</small> 1:1 <small>BLATT</small> 1 <small>OF VON</small> 1 <small>REV</small> A2																																	