

**HC-B 24-SFQD-67/M1PG21**

Order No.: 1772010

<http://eshop.phoenixcontact.de/phoenix/treeViewClick.do?UID=1772010>

Box mounting base, for double locking latch, height 67 mm, with screw connection, 1x Pg21, with protective covers

**Commercial data**

EAN	4017918036683
Pack	10 pcs.
Customs tariff	85389099
Weight/Piece	0.48053 KG
Catalog page information	Page 501 (PC-2009)

**Product notes**WEEE/RoHS-compliant since:  
03/03/2006

<http://www.download.phoenixcontact.com>  
Please note that the data given here has been taken from the online catalog. For comprehensive information and data, please refer to the user documentation. The General Terms and Conditions of Use apply to Internet downloads.

**Technical data****General data**

Note	For contact inserts HC-B24, BB46, D64, DD108, M
Design	B24
Height	67 mm
Width	57 mm
Length	144 mm

Housing type	Box mounting base with cover
Locking type	For double locking latch
Type of the screw connection	1x Pg21
Pg screw connection	With
Wrench size, union nut	28 mm
Cable exit	Conductor exit direction to the left (looking into the open protective cover)
External cable diameter	10 mm ... 19 mm
Protective cover	Yes
Degree of protection	IP65 protection when the connector is inserted
Ambient temperature (operation)	-40 °C ... 125 °C
Housing material	Aluminum, die-cast
Housing surface material	Powder-coated, gray
Seal material	NBR
Cable gland material	Nickel-plated brass
Cable seal material	NBR
Material, protective cover	PA

#### Certificates / Approvals

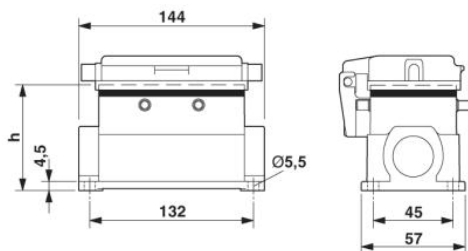


Certification

GOST

#### Diagrams/Drawings

Dimensioned drawing



**Address**

PHOENIX CONTACT Inc., USA  
586 Fulling Mill Road  
Middletown, PA 17057, USA  
Phone (800) 888-7388  
Fax (717) 944-1625  
<http://www.phoenixcon.com>



© 2010 Phoenix Contact  
Technical modifications reserved;