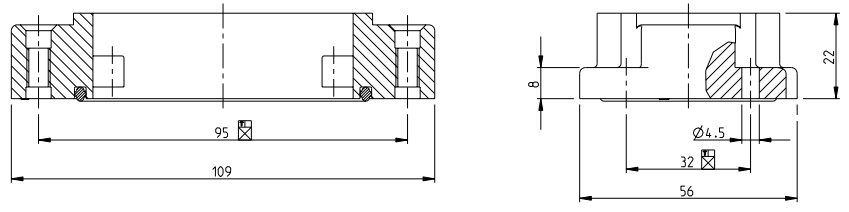


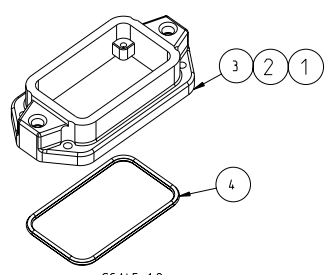
THIS DRAWING IS UNPUBLISHED. RELEASED FOR PUBLICATION .1997
 COPYRIGHT 1997 BY TYCO ELECTRONICS CORPORATION. ALL RIGHTS RESERVED.

LOC	DIST	REVISIONS				
P	LTR	DESCRIPTION	DATE	DWN	APVD	
A6	-	RELEASED AS PER ECR 08-023624	18-SEP-2008	GG	TS	

PN 3-5.4-5 & 0-1

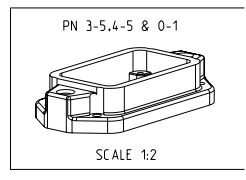
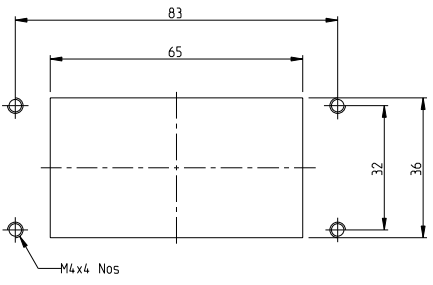


- NOTES.
- 1 MATERIAL: SEE TABLE
 - 2 SURFACE: SEE TABLE
 - 3 VARNISH ON THE INSIDE NOT NECESSARY
 - 4 PACKAGING QUANTITY 5 PIECES IN A BOX



SCALE 1:2

PANEL CUT-OUT



QTY	QTY	QTY	DESCRIPTION	MATERIAL	SURFACE	COLOR	ITEM NO	NOTES
1	1	1	SEAL BG4	NEOPRENE	-	BLACK	4	CONDUCTIVE
1	-	-	SURFACE MOUNTED HOUSING BOTTOM ENTRY FINISHED PRODUCT SIZE4	ALUMINIUM	-	WITHOUT VARNISH	3	EMV
-	1	-	SURFACE MOUNTED HOUSING BOTTOM ENTRY FINISHED PRODUCT SIZE4	ALUMINIUM	YELLOW CHROMATED	BLACK RAL 9005	2	EMV-K
-	-	1	SURFACE MOUNTED HOUSING BOTTOM ENTRY FINISHED PRODUCT SIZE4	ALUMINIUM	-	GREY RAL 7001	1	EMV
0-1	4-5	3-5	DESCRIPTION	MATERIAL	SURFACE	COLOR	ITEM NO	NOTES
ORDERING TEXT								
EMV.10/24.AG								
EMV-K.10/24.AG								
EMV.10/24.AG								

DIMENSIONS: mm		TOLERANCES UNLESS OTHERWISE SPECIFIED: 0 PLC ± 1 PLC ± 2 PLC ± 3 PLC ± 4 PLC ± ANGLES ±		DWN 20.05.98 CHR Kramer APVD Schweiger	Tyco Electronics Tyco Electronics.AMP.GmbH 53757.SanktAugustin.Germany
MATERIAL 1		FINISH 2		NAME SURFACE MOUNTED HOUSING BOTTOM ENTRY EMV/EMV-K.10/24	
CUSTOMER DRAWING		SIZE A3	CAGE CODE 00779	DRAWING NO C-1102718	RESTRICTED TO -
SCALE 1:1			SHEET 1 of 1	REV A6	CUSTOMER DRAWING